

ELCD Series Wall System

Interior Joints (Wall)



This Seismic Elastomeric Drywall System limits the sight line of the expansion joint by using a drywall bead to mount the system outside the joint opening with a finished tape and mud process. The finished Santoprene seal comes in four colors to match your surrounding substrate and finish material. This system accommodates seismic movement.

FEATURES

MAXIMUM MOVEMENT Deep “V” design allows for maximum thermal and seismic movement.

DRYWALL BEAD FLANGE Designed for drywall applications with punched holes for easy mounting. Mud is floated overtop of flange and easily painted leaving only the seal exposed.

COMPLEMENTARY SEAL COLORS Available in four elastomeric seal color options: beige, white, gray or black.

DETAILS

MATERIAL 6063-T6 Aluminum with Rubber

Seal **FINISH** Mill

MOVEMENT

- Thermal: Horizontal and Vertical
- Seismic: Lateral Shear

MOUNTING Flush with drywall bead

JOINT SIZE 1 inch to 6 inches

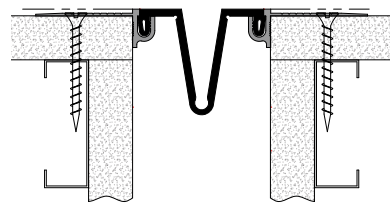
SEAL LENGTH Continuous

APPLICATION Interior

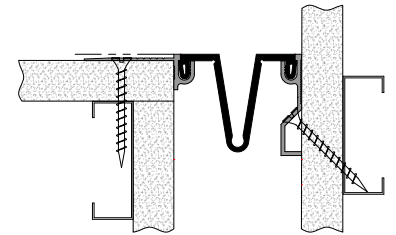
INSTALLATION Wall or Ceiling

OPTIONS Seal Color

SEAL COLORS



Wall-to-Wall



Wall/Ceiling Corner

MODELS

MODEL	INSTALLATION	JOINT SIZE AT MEAN T°F	SYSTEM WIDTH	TOTAL MOVEMENT
ELCD-100	Wall-to-Wall	1" (25mm)	1" (25mm)	0.5" (13mm)
ELCD-100W	Wall/Ceiling Corner	1" (25mm)	1" (25mm)	0.5" (13mm)
ELCD-200	Wall-to-Wall	2" (51mm)	2" (51mm)	2" (51mm)
ELCD-200W	Wall/Ceiling Corner	2" (51mm)	2" (51mm)	2" (51mm)
ELCD-300	Wall-to-Wall	3" (76mm)	3" (76mm)	3" (76mm)
ELCD-300W	Wall/Ceiling Corner	3" (76mm)	3" (76mm)	3" (76mm)

MODEL	INSTALLATION	JOINT SIZE AT MEAN T°F	SYSTEM WIDTH	TOTAL MOVEMENT
ELCD-400	Wall-to-Wall	4" (102mm)	4" (102mm)	4" (102mm)
ELCD-400W	Wall/Ceiling Corner	4" (102mm)	4" (102mm)	4" (102mm)
ELCD-500	Wall-to-Wall	5" (127mm)	5" (127mm)	5" (127mm)
ELCD-500W	Wall/Ceiling Corner	5" (127mm)	5" (127mm)	5" (127mm)
ELCD-600	Wall-to-Wall	6" (152mm)	6" (152mm)	6" (152mm)
ELCD-600W	Wall/Ceiling Corner	6" (152mm)	6" (152mm)	6" (152mm)



Erie Metal Specialties, Inc.
13311 Main Road
Akron, NY 14001

Phone: 716-542-3991
Website: www.eriemetal.com
E-Mail: sales@eriemetal.com