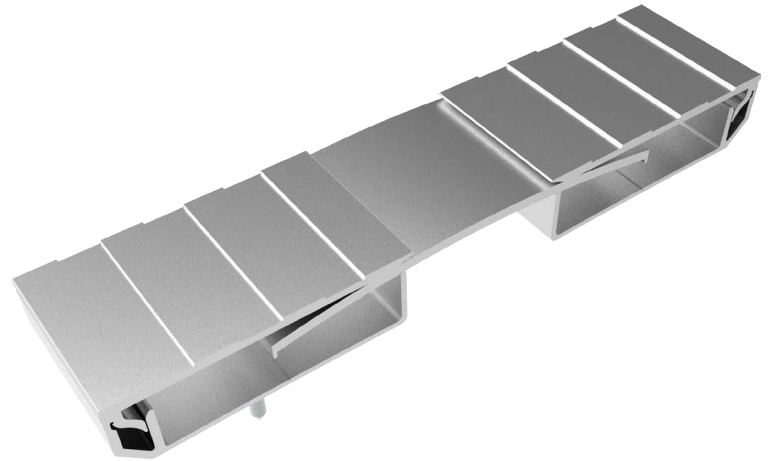


# ENBF Series No Bump System

The Seismic Glide No Bump system is designed to allow for multi-directional thermal movement, in a durable, easily assembled cover system. The convex design allows for a smooth, no bump, transition, when light cart wheeled traffic is rolled over the system.



## FEATURES

**EASIER INSTALLATION** The beveled edge relief on the extrusion virtually eliminates any need to remove concrete from the block-out.

**ANTI-SLIP SURFACE** The no bump, ribbed anti-slip surface provides safe functionality for foot and cart traffic.

**COORDINATING CORNERS** Available with corner option for a complete floor solution.

## DETAILS

**MATERIAL** 6063-T6 Aluminum

**FINISH** Mill

### MOVEMENT

- Thermal: Horizontal and Vertical
- Seismic: Lateral Shear

**MOUNTING** Block Out

**JOINT SIZE** 1 inch to 4 inches

**LENGTH** 10 Linear Feet

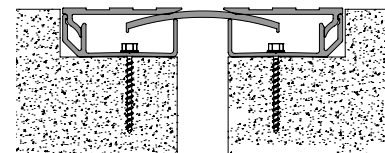
**LOAD** Pedestrian and Light Cart

**INSTALLATION** Floor

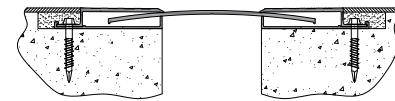
**OPTIONS** Moisture Barrier, Fire Barrier

## MODELS

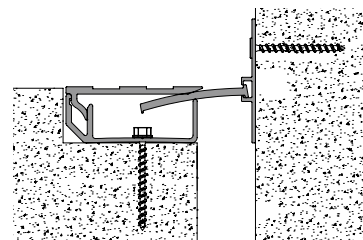
MODEL	INSTALLATION	JOINT SIZE AT MEAN T°F	SYSTEM WIDTH	TOTAL MOVEMENT
ENBF-100	Floor-to-Floor	1" (25mm)	3.5" (89mm)	2" (51mm)
ENBF-100W	Floor-to-Wall	1" (25mm)	2.25" (57mm)	1" (25mm)
ENBF-200	Floor-to-Floor	2" (51mm)	4.5" (114mm)	3.75" (95mm)
ENBF-200W	Floor-to-Wall	2" (51mm)	3.25" (83mm)	2.25" (57mm)
ENBF-300	Floor-to-Floor	3" (76mm)	7.94" (202mm)	3" (76mm)
ENBF-300W	Floor-to-Wall	3" (76mm)	5.5" (140mm)	2.25" (57mm)
ENBF-400	Floor-to-Floor	4" (102mm)	8.94" (227mm)	4" (102mm)
ENBF-400W	Floor-to-Wall	4" (102mm)	6.5" (165mm)	2.25" (57mm)



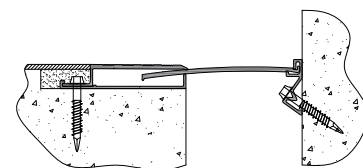
Floor-to-Floor (ENBF100/ENBF200)



Floor-to-Floor (ENBF300/ENBF400)



Floor-to-Wall/Corner (ENBF100W/ENBF200W)



Floor-to-Wall/Corner (ENBF300W/ENBF400W)



Erie Metal Specialties, Inc.  
13311 Main Road  
Akron, NY 14001

Phone: 716-542-3991  
Website: [www.eriametal.com](http://www.eriametal.com)  
E-Mail: [sales@eriametal.com](mailto:sales@eriametal.com)