



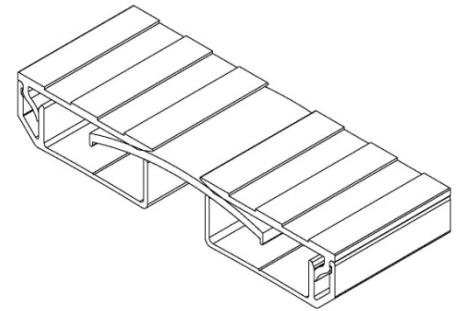
Erie Metal Specialties, Inc.
 13311 Main Road
 Akron, NY 14001

Phone: 716-542-3991
 Website: www.eriemetal.com
 E-Mail: sales@eriemetal.com

ENBF Series Expansion Joint Systems

Prepare for Installation

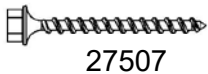
1. Locate the packing slip(s) and shop drawings.
2. Verify that all products listed on the packing slip are included in the package.
3. Check the products for damage. If products are damaged, report a freight claim immediately and leave the products in their packaging. If you sign for products without reporting damage you waive your right to a freight claim and will be responsible for their replacement cost.
4. Read the instructions thoroughly before beginning installation.



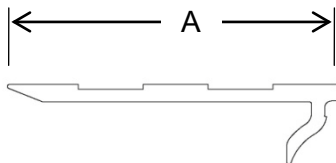
Tools List:

- Drill
- Level
- Rubber Mallet
- Chalk Line
- Chop Saw

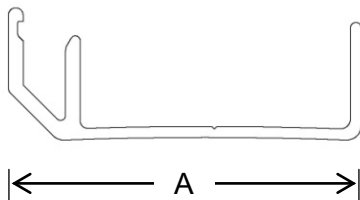
Parts List:



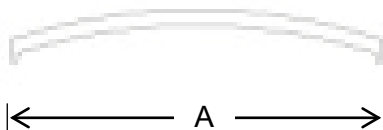
1/4 Dia X 1 3/4 Long
 Masonry Screw



Top Plate	"A"	P/N
ENBF-100	2.377	29498
ENBF-200	3.377	29499

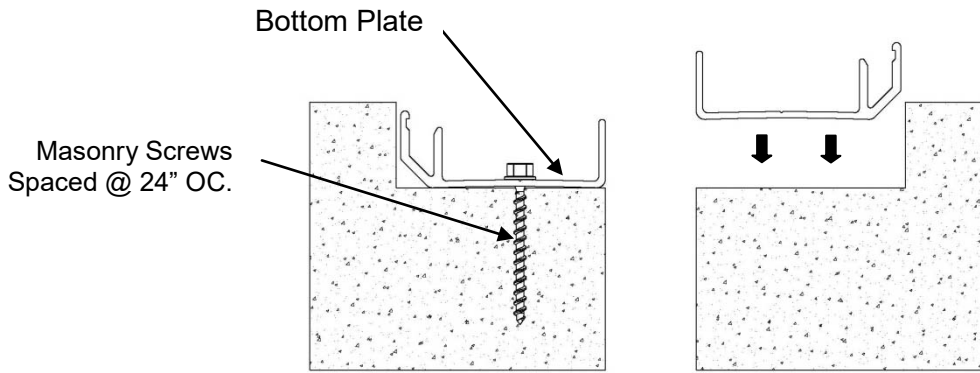


Bottom Plate	"A"	P/N
ENBF-100	2.25	29478
ENBF-200	3.25	29480

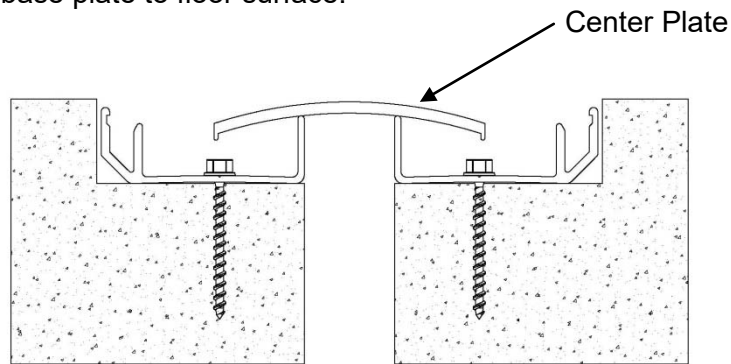


Center Plate	"A"	P/N
ENBF-100	3.00	29486
ENBF-200	5.00	29488

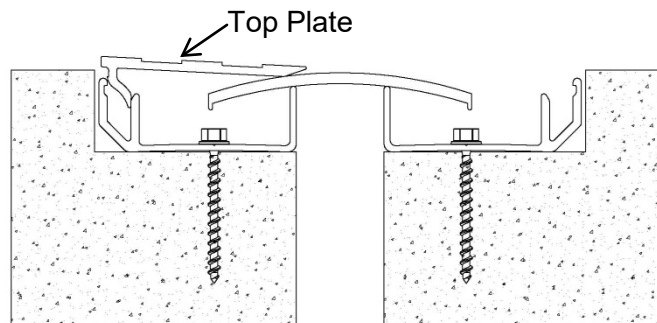
Installation:



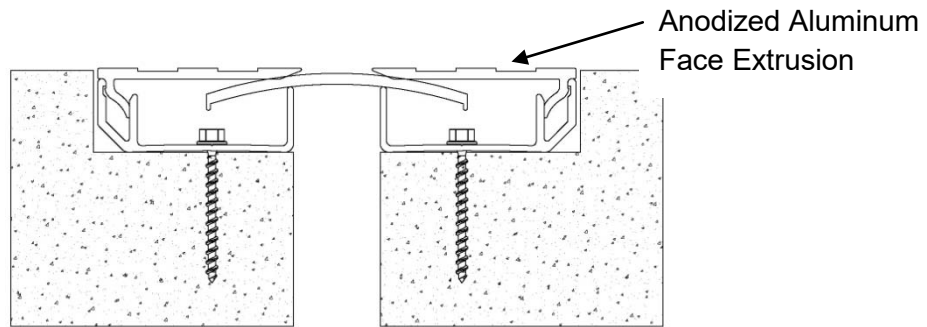
1. If required, fire barrier and/or moisture should be installed at this time.
2. Pre-drill thru-holes in bottom plate for supplied masonry anchors. Position the base extrusion flush with the inside surface of the joint opening. (Allow 1/8 - 1/4 inch gap between each base plate for thermal expansion end to end). Use base plate as template to mark hole locations. Field drill holes thru the bottom plate. Attach base plate to floor surface.



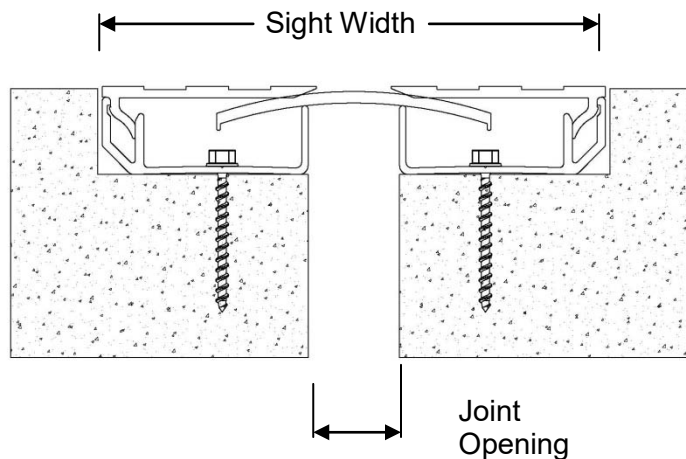
3. Place center plate into position, as shown, across both bottom plates.



4. Align aluminum top plate in front of the bottom plate as shown. Walk along the top plate to snap into place. If required, complete installation with lightly taping top plate into bottom plate with rubber mallet. It should click into place all along the length of the top plate.



5. Repeat installation on other side. When installing, exercise care not to damage top plate.



Operation:

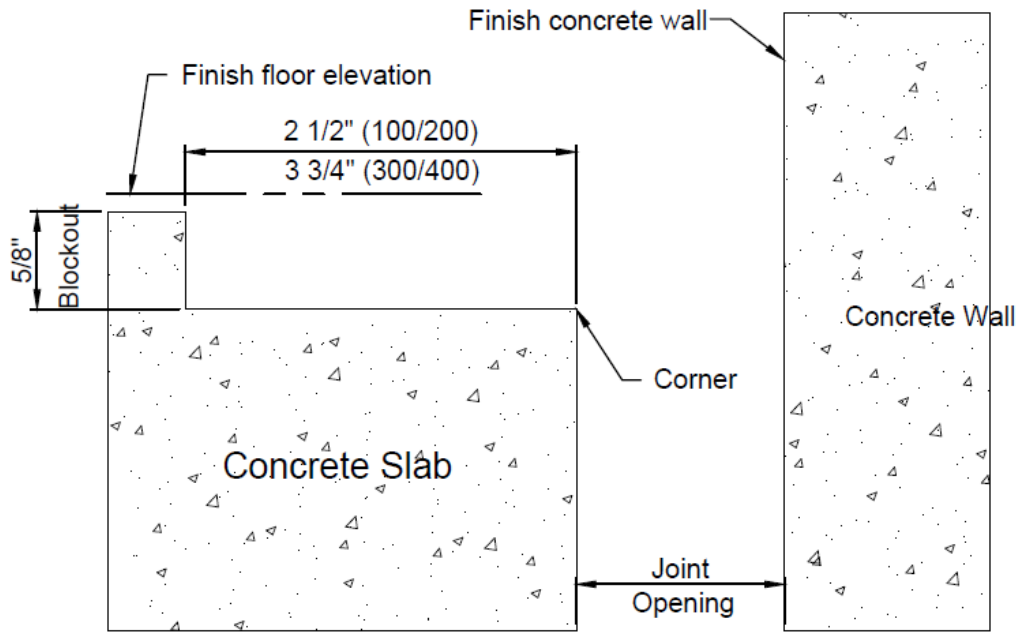
Expansion joints are designed and built for years of dependable service.

Maintenance:

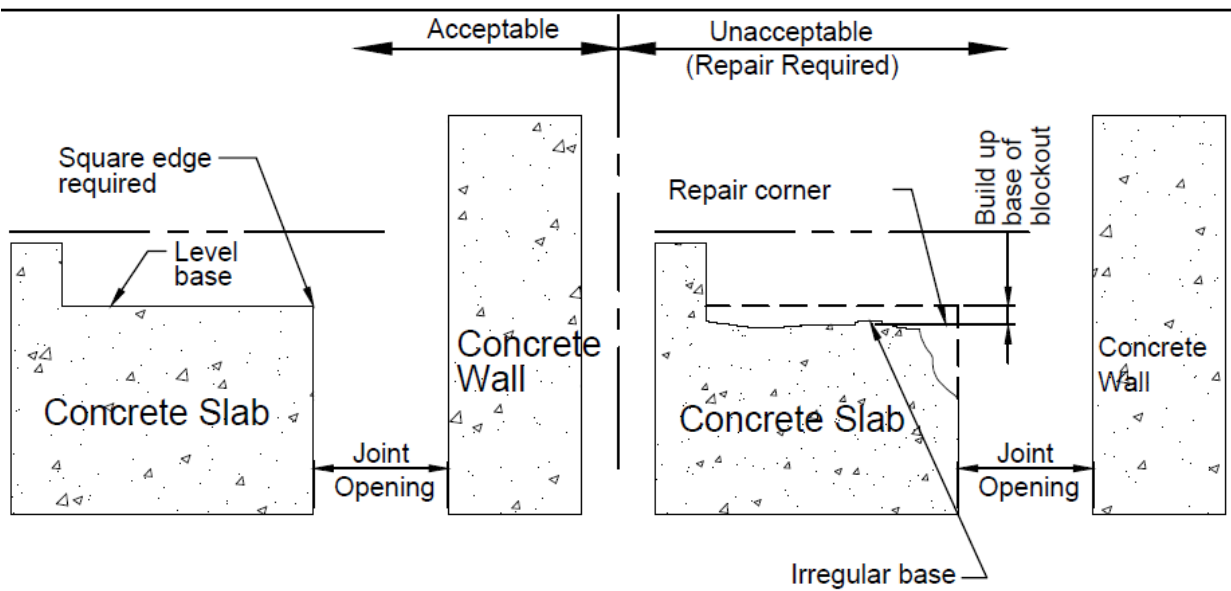
1. Expansion Joints should be cleaned routinely.
2. Exposed surfaces can be cleaned with a mild water-based cleaning solution. Wipe clean with a sponge or soft cloth.
3. Do not use steel wool or powdered abrasive cleaners as they will scratch the aluminum surface.
4. If any questions arise during the operation or maintenance of the products, please feel free to call our office for assistance.

Installation of Corner Condition

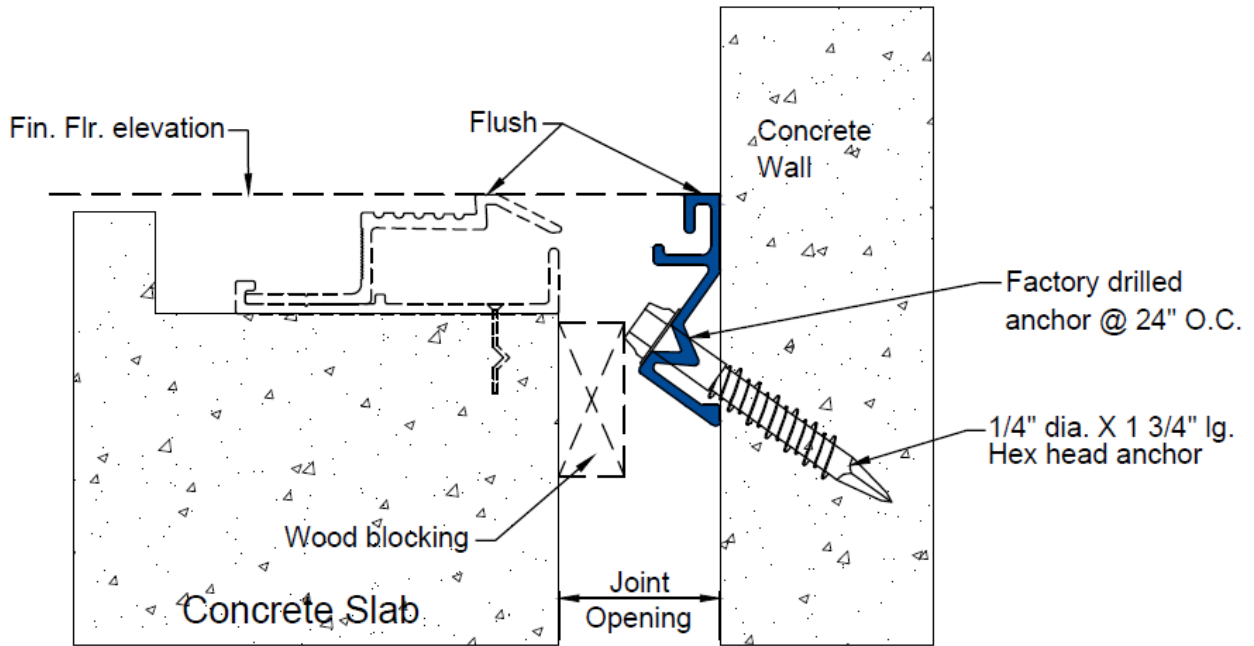
- 1 Prior to beginning work, installer shall inspect concrete slab corner and blockout for acceptability. For repair (if required), refer to step 2; also, measure joint opening for proper size as called for on shop drawings or CAD detail.



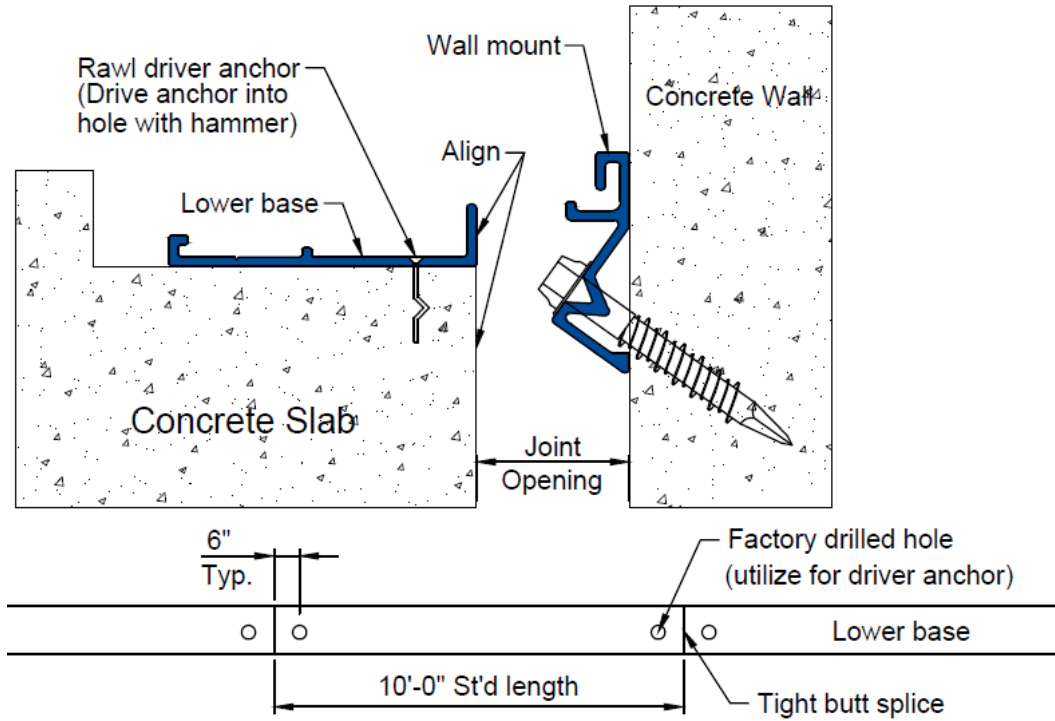
- 2 Utilizing concrete repair material, repair corner of concrete slab and blockout base following manufacturer's written instructions.



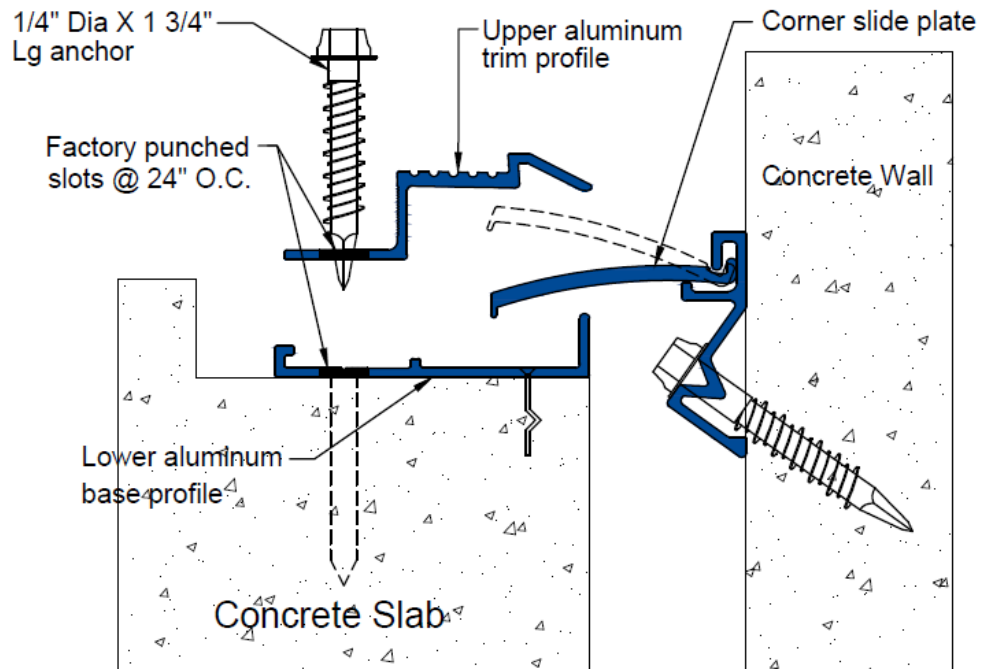
- Position and set aluminum wall mount extrusion flush with finish floor elevation. Secure position with wood blocking if necessary. Anchor extrusion to wall, utilizing manufacturer's recommended anchor.



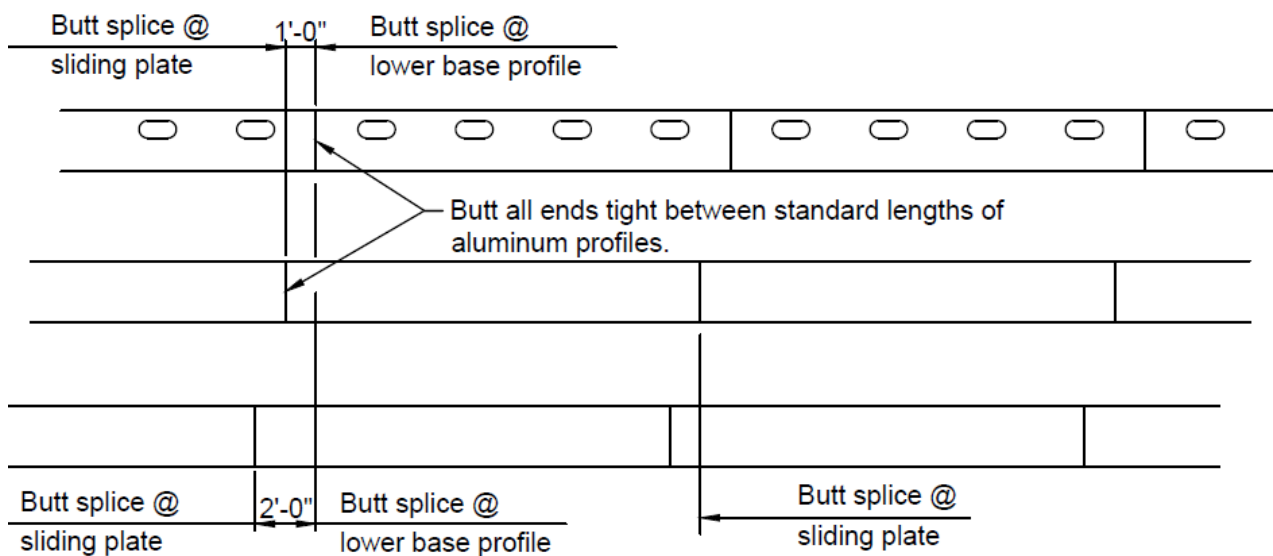
- Align lower base profile with edge of opening and secure to concrete slab utilizing driver anchor, location indicated below.



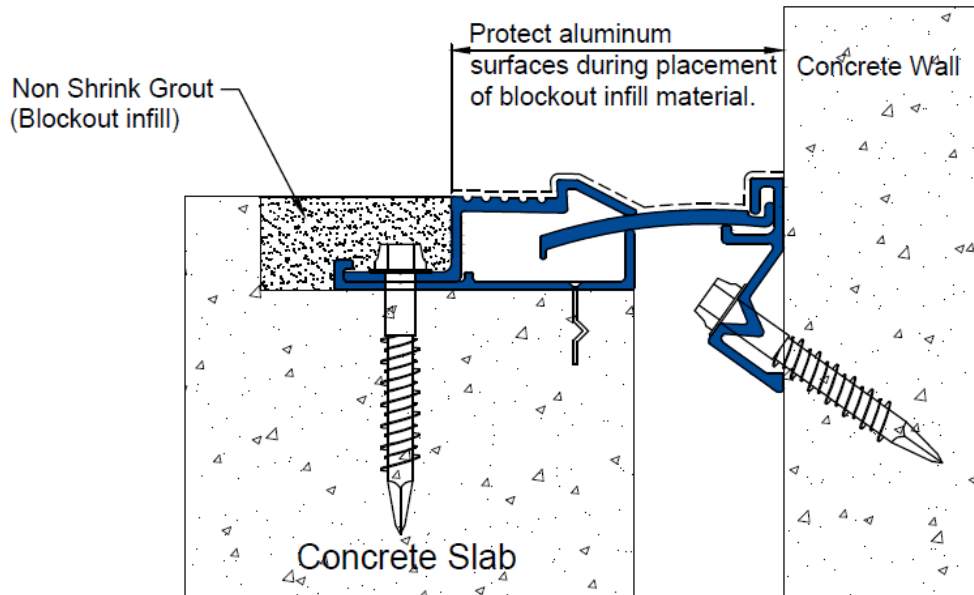
- 5 Place and center slide plate across opening. Secure its position by installing upper trim profile as shown. Review step 6 prior to installing concrete anchors for proper splicing procedures of aluminum components. **Note:** drill holes to proper depth for concrete anchors utilizing 3/16" diameter tapcon carbide masonry drill bits.



- 6 Stagger all splices in accordance with detail illustrated below to provide a stronger assembly and durable installation.



- 7 Install non-shrink Grout into blockout after aluminum profiles and concrete anchors have been installed.



- 8 Install finish flooring material.
Note: Installing contractor shall cover and protect finished expansion joint assembly from damage during installation of finished floor materials. The expansion joint assembly is a finished product. Damage to expansion joint finishes and components are excluded from warranty.

