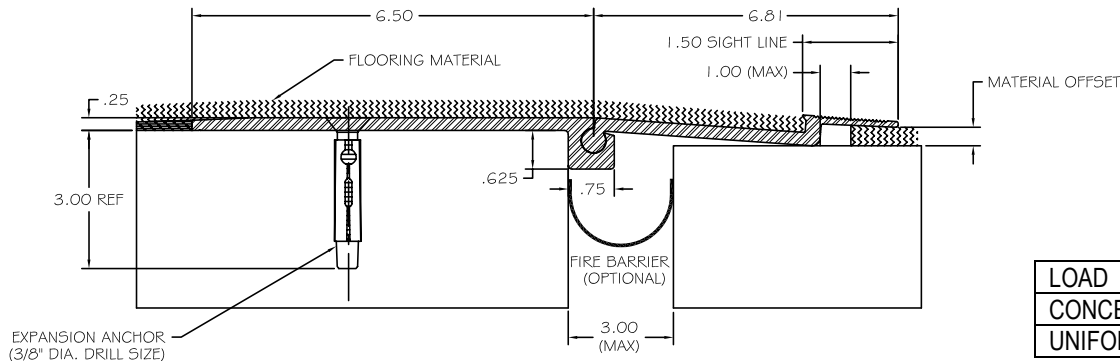


PLAN VIEW
(NOT TO SCALE)



SURFACE CROSS SECTION
NOT TO SCALE

NOTE: MALE PIECE RESTS ON LOWER PIECE (WHEN APPLICABLE)
APPROX. 2" VERTICAL MOVEMENT WITH HINGE JOINT (10% TOTAL ROTATIONAL MOVEMENT)

SPECIFICATIONS

- 6063-T6 ALUMINUM
- MILL FINISH
- SUPPLIED WITH EXPANSION ANCHORS
- STANDARD LENGTH=10' / SECTION

PART NUMBER	MATERIAL OFFSET
EFA150-125	.125
EFA150-250	.250
EFA150-375	.375

LOAD	JOINT OPENING		
	1"	2"	3"
CONCENTRATED (MAX)	325#	250#	200#
UNIFORM (MAX)	200 PSI	150 PSI	100 PSI

NO.			

The information contained herein is the proprietary property of ERIE METAL SPECIALTIES, INC. No portion of it may be reproduced by any means or used in any form accept for the purpose for which it was intended. All rights of design and invention are hereby reserved.

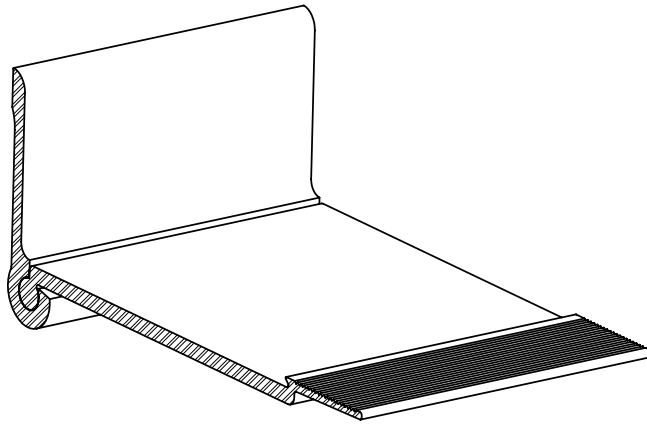


13311 Main Road • Akron • New York • 14001
Phone: (716) 542-3991 • Fax: (716) 542-3996 • E-mail: sales@eriemetal.com

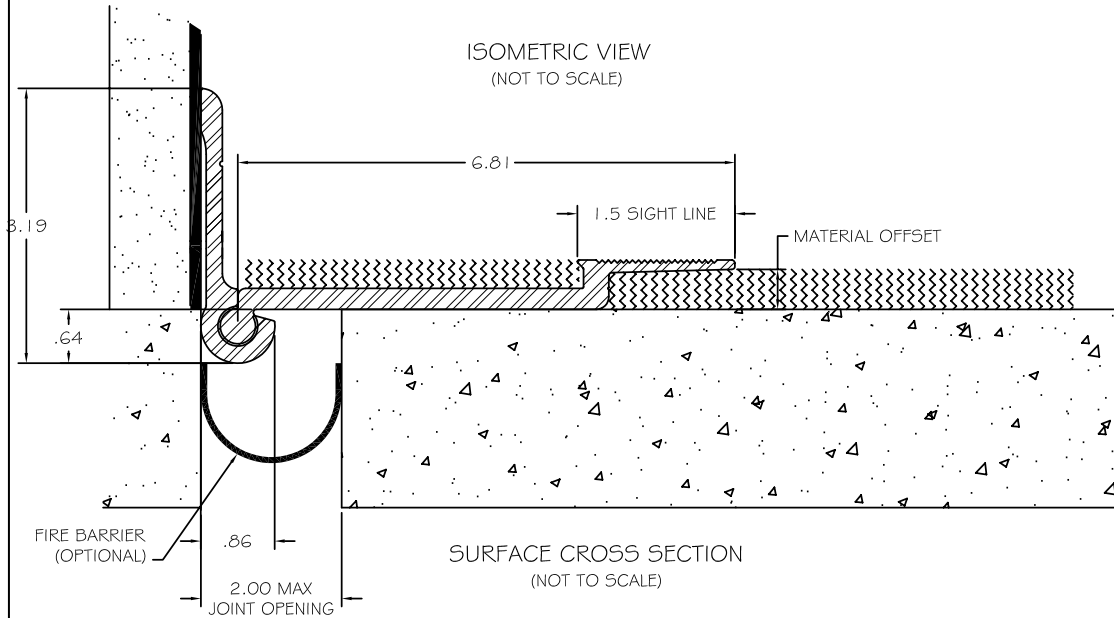
PROJECT:

TITLE:

Detailed by: BAF	Date: 10/21/17
Checked By: SLP	Date: 10/21/17
Scale: NTS	EMS Job #:
Sheet No.: 1 of 1	Drawing No.:



ISOMETRIC VIEW
(NOT TO SCALE)



SPECIFICATIONS

- 6063-T6 ALUMINUM
- MILL FINISH
- SUPPLIED WITH EXPANSION ANCHORS
- STANDARD LENGTH=10' / SECTION
- MOUNTING HARDWARE SUPPLIED BY OTHERS, SPACED 19" O.C. MAX

PART NUMBER	MATERIAL OFFSET
EFDW-125	.125
EFDW-250	.250
EFDW-375	.375

MAX LOAD @ 2" JOINT OPENING	
CONCENTRATED	400#
UNIFORM	150 PSI

NO.	Description	Date	By

The information contained herein is the proprietary property of ERIE METAL SPECIALTIES, INC. No portion of it may be reproduced by any means or used in any form except for the purpose for which it was intended. All rights of design and invention are hereby reserved.



13311 Main Road • Akron • New York • 14001
 Phone: (716) 542-3991 • Fax: (716) 542-3996 • E-mail: sales@eriemetal.com

PROJECT:

TITLE:

Detailed by: BAF	Date: 10/21/17
Checked By: SLP	Date: 10/21/17
Scale: NTS	EMS Job #:
Sheet No.: 1 of 1	Drawing No.: