

**EFCT-400 THRU EFCT-2400 DETAIL**  
**WALL TO WALL OR CEILING TO CEILING**  
**INTERIOR CONDITION**

( ) - Denotes Millimeters

Note: Minimum and Maximum Values are after Movement Occurs. Mid Point Value is the Recommended Size of Opening at Installation.

DIMENSION CHART					
MODEL	"A" @ Min	"A" @ Mid	"A" @ Max	"B"	TOTAL MOVEMENT
EFCT-400	2 1/4" (57)	4" (102)	12" (300)	13 1/2" (343)	9 3/4" (248)
EFCT-600	2 1/4" (57)	6" (152)	12" (300)	13 1/2" (343)	9 3/4" (248)
EFCT-800	2 1/4" (57)	8" (203)	16" (400)	17 1/2" (445)	13 3/4" (349)
EFCT-1000	2 3/4" (70)	10" (254)	20" (508)	21 1/2" (546)	17 1/4" (438)
EFCT-1200	3" (80)	12" (305)	24" (600)	25 1/2" (648)	21" (534)
EFCT-1800	3" (80)	18" (305)	36" (900)	37 1/2" (953)	33" (800)
EFCT-2400	3" (80)	24" (610)	48" (1200)	49 1/2" (1257)	45" (1100)

NO.	Description	Date	By
The information contained herein is the proprietary property of ERIE METAL SPECIALTIES, INC. No portion of it may be reproduced by any means or used in any form except for the purpose for which it was intended. All rights of design and invention are hereby reserved.			

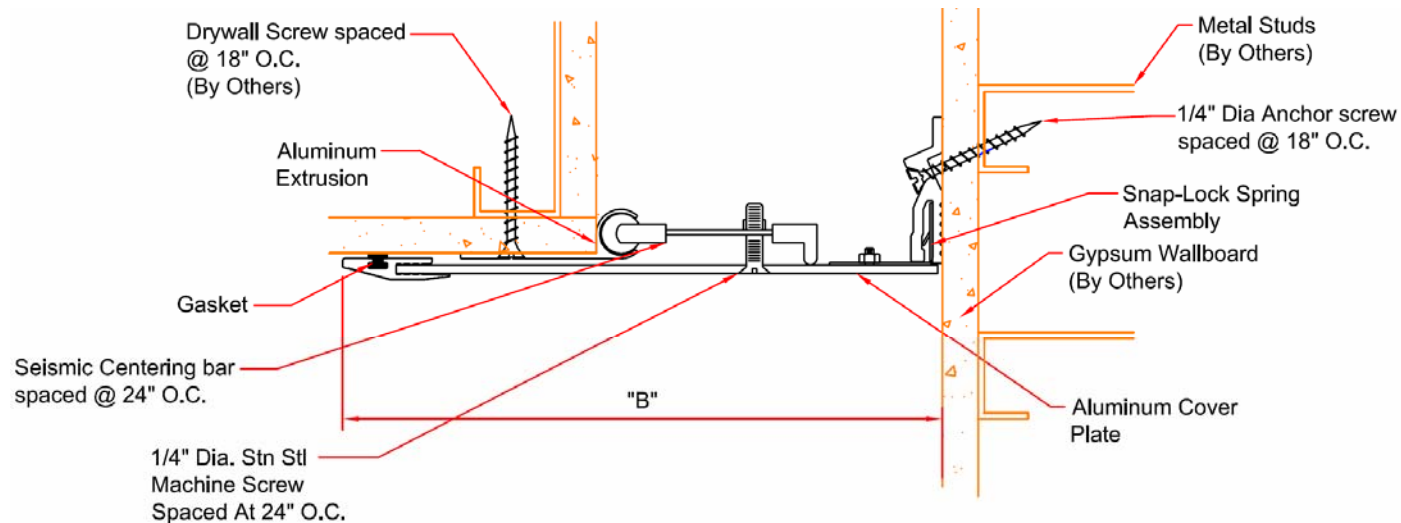


13311 Main Road • Akron • New York • 14001  
 Phone: (716) 542-3991 • Fax: (716) 542-3996 • E-mail: sales@eriametal.com

**PROJECT:**

**TITLE:**

Detailed by: BAF	Date: 10/21/17
Checked By: SLP	Date: 10/21/17
Scale: NTS	EMS Job #:
Sheet No.: 1 of 1	Drawing No.:



### EFCT-400W THRU EFCT-2400W DETAIL

WALL TO WALL OR CEILING TO CEILING  
INTERIOR CORNER CONDITION

( ) - Denotes Millimeters

Note: Minimum and Maximum Values are after Movement Occurs. Mid Point Value is the Recommended Size of Opening at Installation.

DIMENSION CHART					
MODEL	"A" @ Min	"A" @ Mid	"A" @ Max	"B"	TOTAL MOVEMENT
EFCT-400W	3 1/8" (79)	4" (102)	9 3/8" (238)	9 3/4" (248)	6 1/4" (159)
EFCT-600W	3 1/8" (79)	6" (152)	9 3/8" (238)	9 3/4" (248)	6 1/4" (159)
EFCT-800 W	4 1/8" (105)	8" (203)	12 3/8" (314)	12 3/4" (324)	8 1/4" (209)
EFCT-1000W	5 1/8" (130)	10" (254)	15 3/8" (391)	15 3/4" (476)	10 1/4" (260)
EFCT-1200W	6 1/8" (156)	12" (305)	18 3/8" (467)	18 3/4" (476)	12 1/4" (311)
EFCT-1800W	9 1/8" (232)	18" (305)	27 3/8" (695)	27 3/4" (705)	18 1/4" (464)
EFCT-2400W	12 1/8" (308)	24" (610)	36 3/8" (924)	36 3/4" (933)	24 1/4" (616)

NO.			

The information contained herein is the proprietary property of ERIE METAL SPECIALTIES, INC. No portion of it may be reproduced by any means or used in any form except for the purpose for which it was intended. All rights of design and invention are hereby reserved.



13311 Main Road • Akron • New York • 14001  
Phone: (716) 542-3991 • Fax: (716) 542-3996 • E-mail: sales@eriemetal.com

PROJECT:

TITLE:

Detailed by: BAF	Date: 10/21/17
Checked By: SLP	Date: 10/21/17
Scale: NTS	EMS Job #:
Sheet No.: 1 of 1	Drawing No.: