

ESFG-200 DETAIL
FLOOR TO FLOOR CONDITION

Note: Exposed Surface

- For openings up to 6"
- Plate supplied with grooved surface/mill finish

Note: Minimum And Maximum Values Are After Movement Occurs. Mid Point Value Is The Recommended Size Of Opening At Installation.

NO.			

The information contained herein is the proprietary property of ERIE METAL SPECIALTIES, INC. No portion of it may be reproduced by any means or used in any form except for the purpose for which it was intended. All rights of design and invention are hereby reserved.

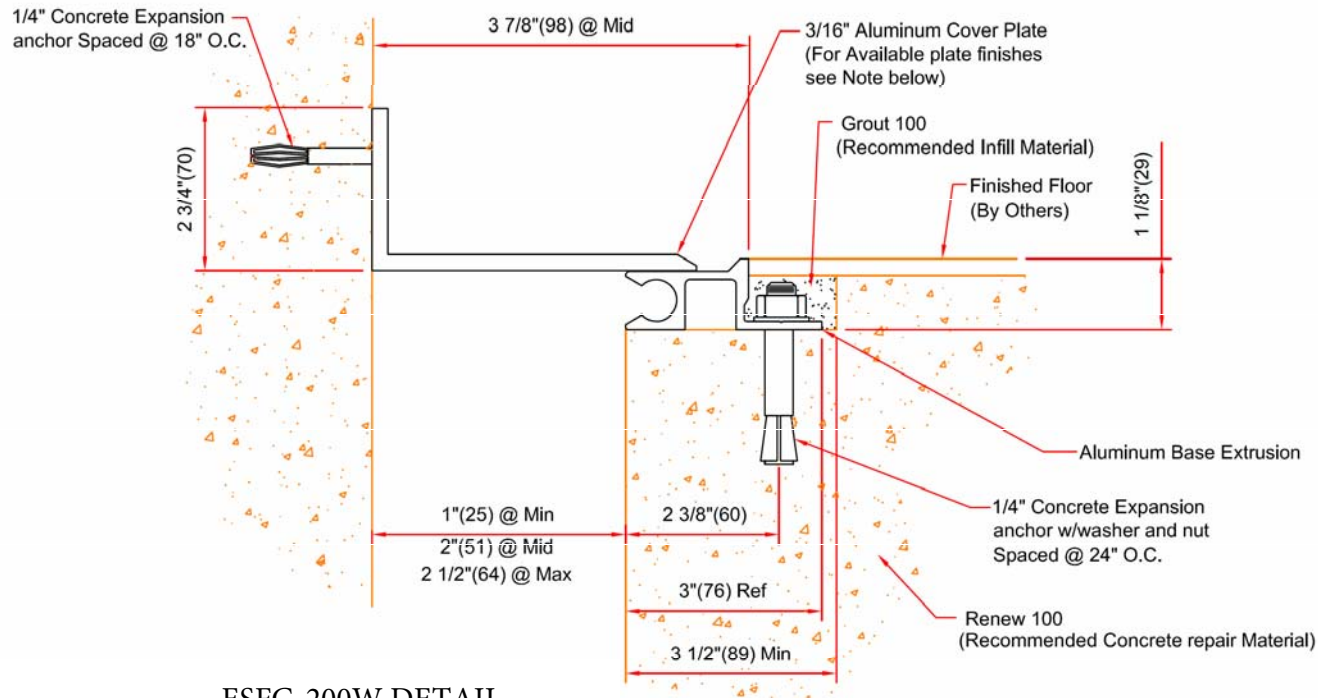


13311 Main Road • Akron • New York • 14001
Phone: (716) 542-3991 • Fax: (716) 542-3996 • E-mail: sales@eriemetal.com


PROJECT:

TITLE:

Detailed by: BAF	Date: 10/21/17
Checked By: SLP	Date: 10/21/17
Scale: NTS	EMS Job #:
Sheet No.: 1 of 1	Drawing No.:



ESFG-200W DETAIL
FLOOR TO WALL CONDITION

Note:  Exposed Surface

- For openings up to 6"
 - Plate supplied with grooved surface/mill finish

Note: Minimum And Maximum Values Are After Movement Occurs. Mid Point Value Is The Recommended Size Of Opening At Installation.

NO.	Description	Date	By
<p>The information contained herein is the proprietary property of ERIE METAL SPECIALTIES, INC. No portion of it may be reproduced by any means or used in any form except for the purpose for which it was intended. All rights of design and invention are hereby reserved.</p>			

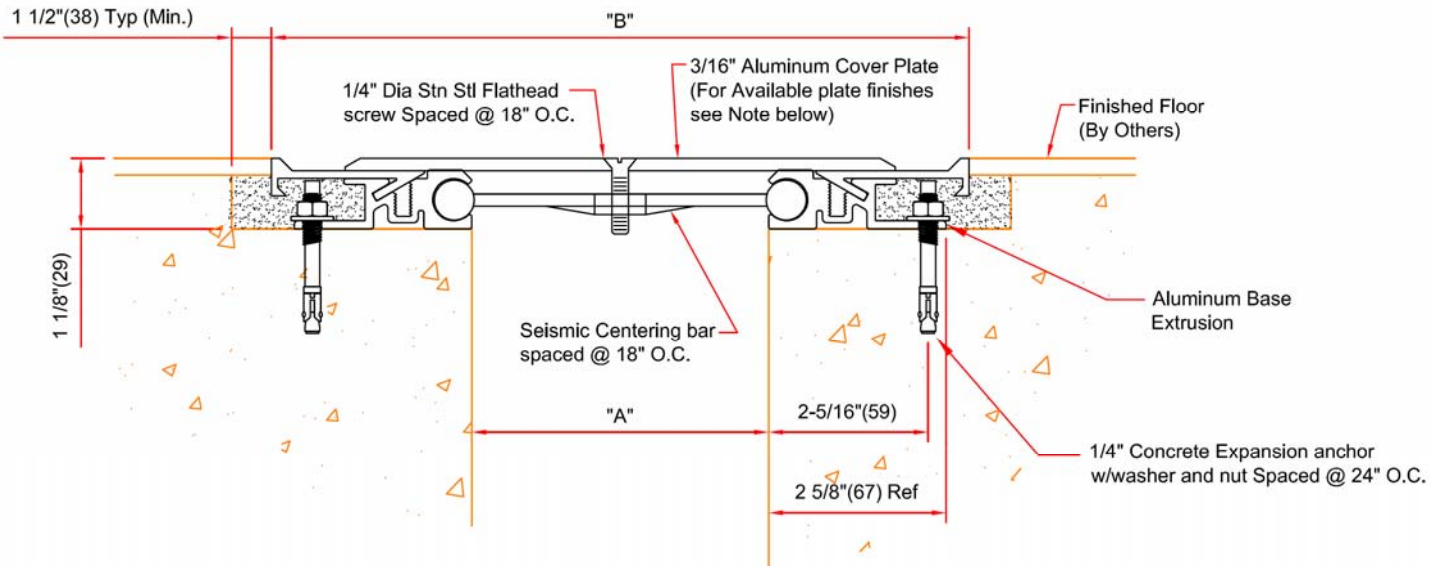


13311 Main Road • Akron • New York • 14001
 Phone: (716) 542-3991 • Fax: (716) 542-3996 • E-mail: sales@eriemetal.com

PROJECT:

TITLE:

Detailed by: BAF	Date: 10/21/17
Checked By: SLP	Date: 10/21/17
Scale: NTS	EMS Job #:
Sheet No.: 1 of 1	Drawing No.:



() - Denotes Millimeters

Note:



- For openings up to 6"
 - Plate supplied with grooved surface/mill finish
- For openings greater than 6"
 - Plate supplied with brush finish
 - Grooves optional for plates up to 24" in width

DIMENSION CHART					
MODEL	"A" @ Min	"A" @ Mid	"A" @ Max	"B"	TOTAL MOVEMENT
ESFG-400	1" (25)	4" (102)	6" (152)	10 3/8" (264)	5" (127)
ESFG-600	1" (25)	6" (152)	9" (229)	13 3/4" (349)	8" (203)
ESFG-800	1" (25)	8" (203)	12" (305)	15 3/4" (400)	11" (279)
ESFG-1000	1" (25)	10" (254)	15" (381)	18 3/4" (476)	14" (356)
ESFG-1200	1" (25)	12" (305)	18" (457)	21 3/4" (552)	17" (432)
ESFG-1800	1" (25)	18" (457)	27" (686)	31 3/4" (806)	26" (660)
ESFG-2400	1" (25)	24" (607)	36" (914)	40 3/4" (1035)	35" (889)

Note: Minimum and Maximum Values are after Movement Occurs. Mid Point Value is the Recommended Size of Opening at Installation.

NO.			

The information contained herein is the proprietary property of ERIE METAL SPECIALTIES, INC. No portion of it may be reproduced by any means or used in any form except for the purpose for which it was intended. All rights of design and invention are hereby reserved.

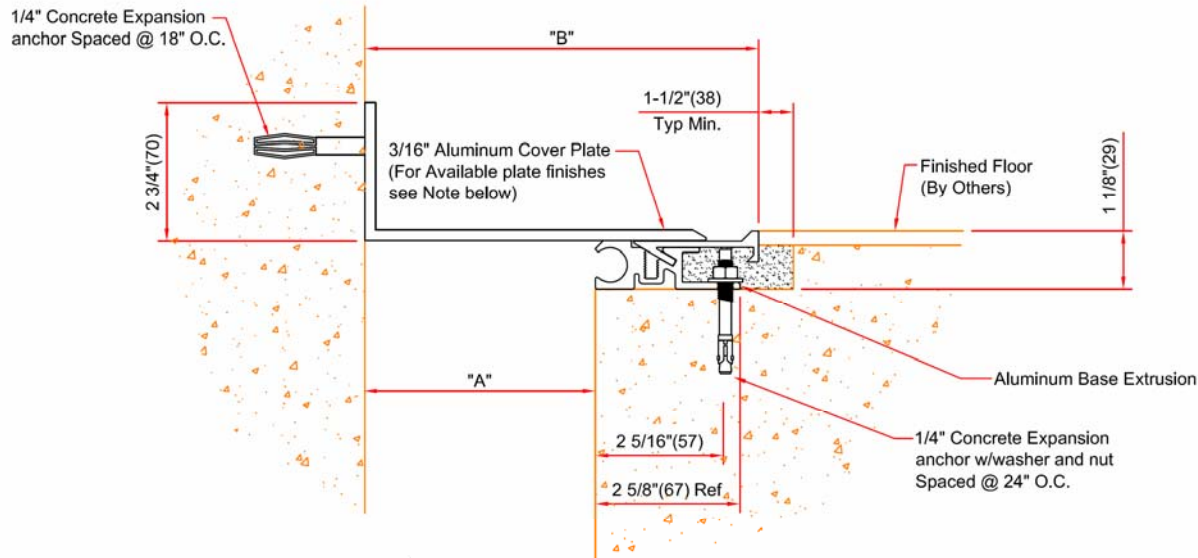


13311 Main Road • Akron • New York • 14001
 Phone: (716) 542-3991 • Fax: (716) 542-3996 • E-mail: sales@eriemetal.com

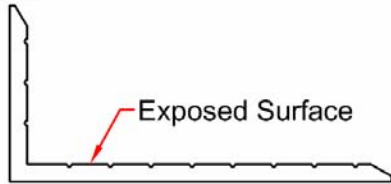
PROJECT:

TITLE:

Detailed by: BAF	Date: 10/21/17
Checked By: SLP	Date: 10/21/17
Scale: NTS	EMS Job #:
Sheet No.: 1 of 1	Drawing No.:



Note:



- For openings up to 6"
 - Plate supplied with grooved surface/mill finish
- For openings Greater than 6"
 - Plate supplied with brush finish
 - Grooves optional for plates up to 24" in width
 - Grooves not available for plates over 24"

() - Denotes Millimeters

DIMENSION CHART					
MODEL	"A" @ Min	"A" @ Mid	"A" @ Max	"B"	TOTAL MOVEMENT
ESFG-400W	1" (25)	4" (102)	5" (127)	7 3/16" (183)	4" (102)
ESFG-600W	1" (25)	6" (152)	7 1/2" (191)	9 7/8" (251)	6 1/2" (165)
ESFG-800W	1" (25)	8" (203)	10" (254)	11 7/8" (302)	9" (220)
ESFG-1000W	1" (25)	10" (254)	12 1/2" (317)	14 3/8" (374)	11 1/2" (292)
ESFG-1200W	1" (25)	12" (305)	15" (381)	16 7/8" (429)	14" (356)
ESFG-1800W	1" (25)	18" (457)	22 1/2" (572)	24 7/8" (632)	21 1/2" (546)
ESFG-2400W	1" (25)	24" (607)	30" (762)	32 3/8" (822)	29" (737)

Note: Minimum and Maximum Values are after Movement Occurs. Mid Point Value is the Recommended Size of Opening at Installation.

NO.			

The information contained herein is the proprietary property of ERIE METAL SPECIALTIES, INC. No portion of it may be reproduced by any means or used in any form except for the purpose for which it was intended. All rights of design and invention are hereby reserved.



13311 Main Road • Akron • New York • 14001
 Phone: (716) 542-3991 • Fax: (716) 542-3996 • E-mail: sales@eriemetal.com

PROJECT:

TITLE:

Detailed by: BAF	Date: 10/21/17
Checked By: SLP	Date: 10/21/17
Scale: NTS	EMS Job #:
Sheet No.: 1 of 1	Drawing No.: