



SUBSTITUTION REQUEST

(After the Bidding/Negotiating Phase)

Project: _____ Substitution Request Number: _____

 From: _____
 To: _____ Date: _____

 A/E Project Number: _____
 Re: _____ Contract For: _____

Specification Title: _____ Description: _____
 Section: _____ Page: _____ Article/Paragraph: _____

Proposed Substitution: _____
 Manufacturer: _____ Phone: _____
 Address: _____
 Trade Name: _____ Model No.: _____
 Installer: _____ Phone: _____
 Address: _____

History: New product 1-4 years old 5-10 years old More than 10 years old

Differences between proposed substitution and specified product: _____

Point-by-point comparative data attached — REQUIRED BY A/E

Reason for not providing specified item: _____

Similar Installation:

Project: _____ Architect: _____
 Address: _____ Owner: _____
 _____ Date Installed: _____

Proposed substitution affects other parts of Work: No Yes; explain _____

Savings to Owner for accepting substitution: _____ (\$ _____).

Proposed substitution changes Contract Time: No Yes [Add] [Deduct] _____ days.

Supporting Data Attached: Drawings Product Data Samples Tests Reports _____

SUBSTITUTION REQUEST

(After the Bidding/Negotiating Phase — Continued)

The Undersigned certifies:

- Proposed substitution has been fully investigated and determined to be equal or superior in all respects to specified product.
 - Same warranty will be furnished for proposed substitution as for specified product.
 - Same maintenance service and source of replacement parts, as applicable, is available.
 - Proposed substitution will have no adverse effect on other trades and will not affect or delay progress schedule.
 - Cost data as stated above is complete. Claims for additional costs related to accepted substitution which may subsequently become apparent are to be waived.
 - Proposed substitution does not affect dimensions and functional clearances.
 - Payment will be made for changes to building design, including A/E design, detailing, and construction costs caused by the substitution.
 - Coordination, installation, and changes in the Work as necessary for accepted substitution will be complete in all respects.
-

Submitted by: _____

Signed by: _____

Firm: _____

Address: _____

Telephone: _____

Attachments:

A/E's REVIEW AND ACTION

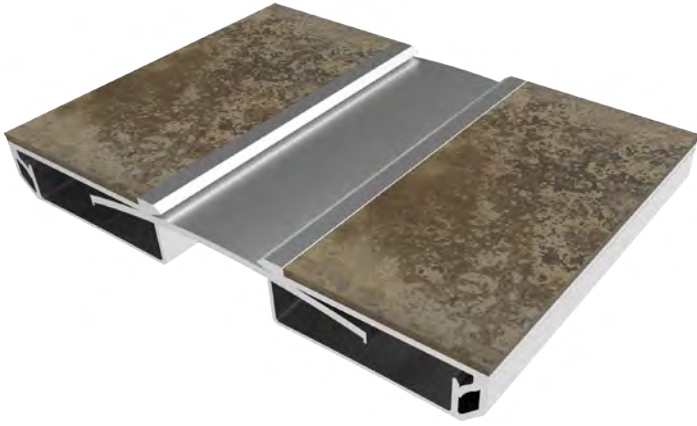
- Substitution approved - Make submittals in accordance with Specification Section 01 25 00 Substitution Procedures.
- Substitution approved as noted - Make submittals in accordance with Specification Section 01 25 00 Substitution Procedures.
- Substitution rejected - Use specified materials.
- Substitution Request received too late - Use specified materials.

Signed by: _____ Date: _____

Additional Comments: Contractor Subcontractor Supplier Manufacturer A/E
 Other:

ENBR Series Flooring Infill System

Interior Joints (Floor)



DETAILS

MATERIAL 6063-T6 Aluminum

FINISH Mill

MOVEMENT

- Thermal: Horizontal and Vertical
- Seismic: Lateral Shear

MOUNTING Block Out

JOINT SIZE 1 inch to 4 inches

LENGTH 10 Linear Feet

APPLICATION Interior

LOAD Pedestrian and Light Cart

INSTALLATION Floor

OPTIONS Moisture Barrier, Fire Barrier

MODELS

MODEL	INSTALLATION	JOINT SIZE AT MEAN T°F	SYSTEM WIDTH	TOTAL MOVEMENT
ENBR-100	Floor-to-Floor	1" (25mm)	2" (50mm)	2" (51mm)
ENBR-100W	Floor-to-Wall	1" (25mm)	1.5" (38mm)	1" (25mm)
ENBR-200	Floor-to-Floor	2" (51mm)	3" (76mm)	3.75" (95mm)
ENBR-200W	Floor-to-Wall	2" (51mm)	2.5" (64mm)	2.25" (57mm)
ENBR-300	Floor-to-Floor	3" (76mm)	4" (102mm)	3" (76mm)
ENBR-300W	Floor-to-Wall	3" (76mm)	3.5" (89mm)	2.25" (57mm)
ENBR-400	Floor-to-Floor	4" (102mm)	5" (127mm)	4" (102mm)
ENBR-400W	Floor-to-Wall	4" (102mm)	4.5" (114mm)	2.25" (57mm)

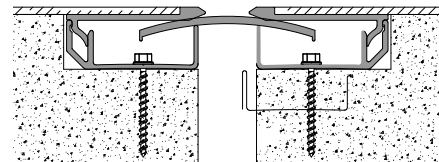
The Seismic flooring infill system is designed to accept most traditional Floor Systems and allows for multi-directional thermal movement, yet minimize the sight-line when installed.

FEATURES

EASIER INSTALLATION The beveled edge relief on the extrusion virtually eliminates any need to remove concrete from the block-out.

FLOORING INFILL Designed with a recess for vinyl, carpet or tile (VCT) flooring to cover the aluminum plate and reduce the overall sight-line.

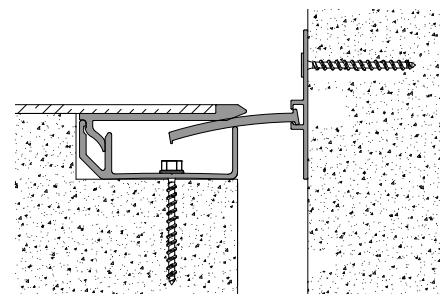
COORDINATING CORNERS Available with corner option for a complete floor solution.



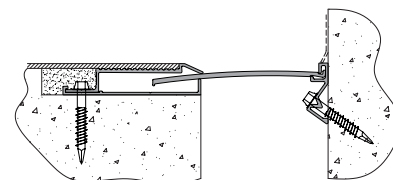
Floor-to-Floor (ENBR100/ENBR200)



Floor-to-Floor (ENBR300/ENBR400)



Floor-to-Wall/Corner (ENBR100W/ENBR200W)



Floor-to-Wall/Corner (ENBR300W/ENBR400W)



Erie Metal Specialties, Inc.
13311 Main Road
Akron, NY 14001

Phone: 716-542-3991
Website: www.eriametal.com
E-Mail: sales@eriametal.com



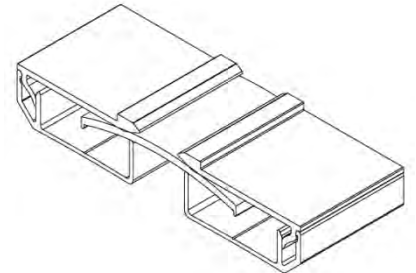
Erie Metal Specialties, Inc.
 13311 Main Road
 Akron, NY 14001

Phone: 716-542-3991
 Website: www.eriemetal.com
 E-Mail: sales@eriemetal.com

ENBR Series Expansion Joint Systems

Prepare for Installation

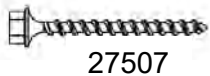
1. Locate the packing slip(s) and shop drawings.
2. Verify that all products listed on the packing slip are included in the package.
3. Check the products for damage. If products are damaged, report a freight claim immediately and leave the products in their packaging. If you sign for products without reporting damage you waive your right to a freight claim and will be responsible for their replacement cost.
4. Read the instructions thoroughly before beginning installation.



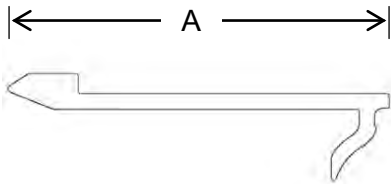
Tools List:

- Drill
- Level
- Rubber Mallet
- Chalk Line
- Chop Saw

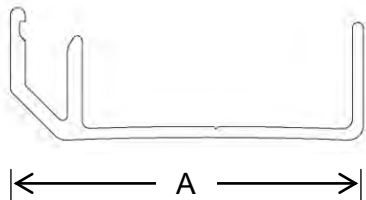
Parts List:



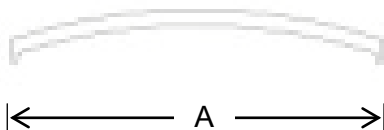
¼ Dia X 1 ¾ Long
 Masonry Screw



Top Plate	"A"	P/N
ENBR-100	2.377	29477
ENBR-200	3.377	29479

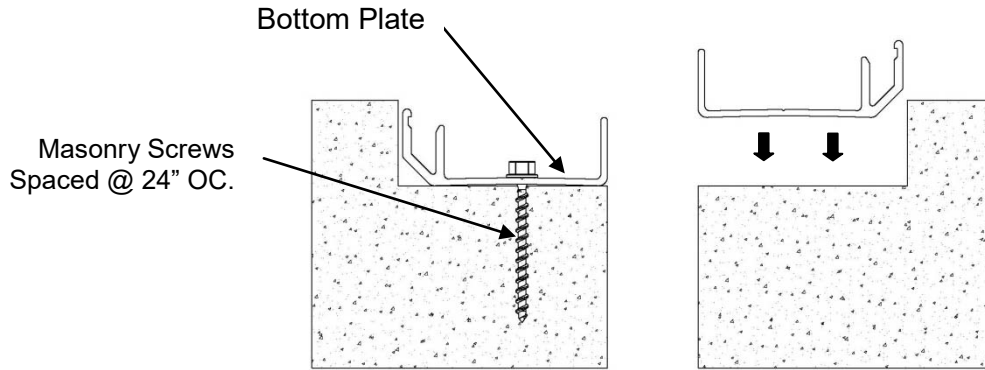


Bottom Plate	"A"	P/N
ENBR-100	2.25	29478
ENBR-200	3.25	29480

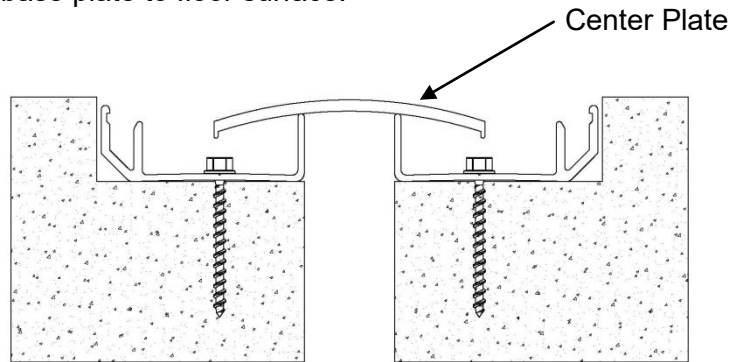


Center Plate	"A"	P/N
ENBR-100	3.00	29486
ENBR-200	5.00	29488

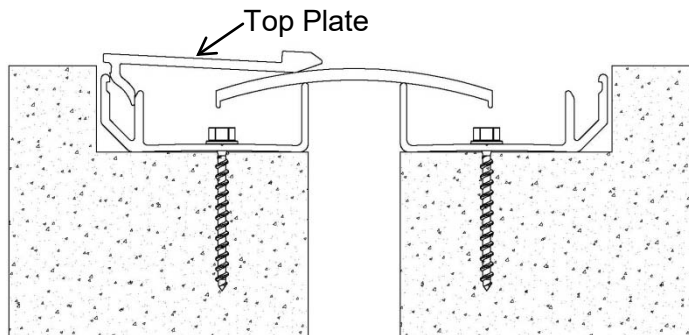
Installation:



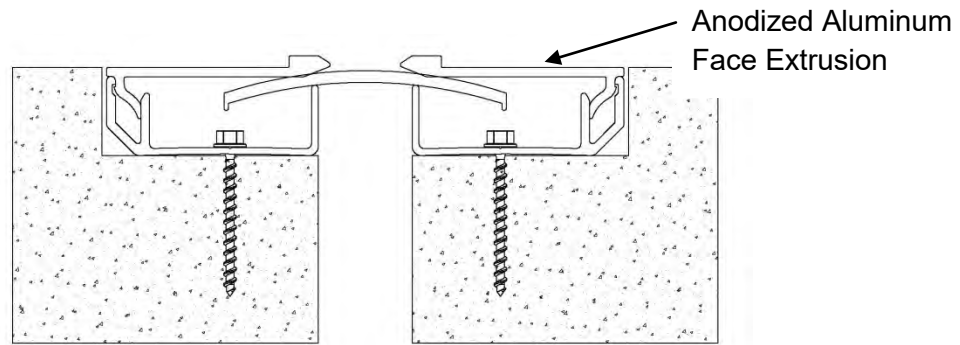
1. If required, fire barrier and/or moisture should be installed at this time.
2. Pre-drill thru-holes in bottom plate for supplied masonry anchors. Position the base extrusion flush with the inside surface of the joint opening. (Allow 1/8 - 1/4 inch gap between each base plate for thermal expansion end to end). Use base plate as template to mark hole locations. Field drill holes thru the bottom plate. Attach base plate to floor surface.



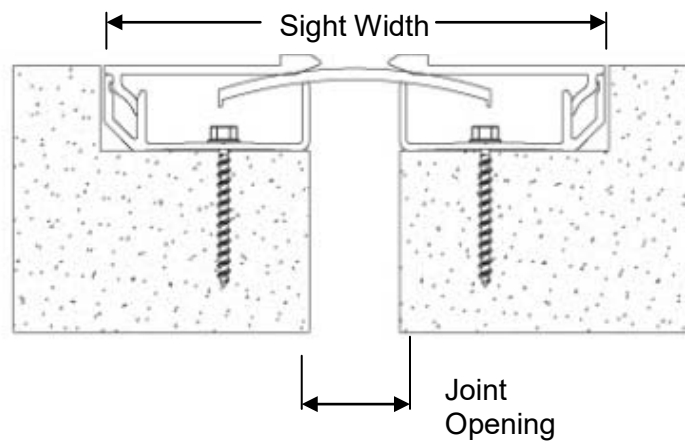
3. Place center plate into position, as shown, across both bottom plates.



4. Align aluminum top plate in front of the bottom plate as shown. Walk along the top plate to snap into place. If required, complete installation with lightly taping top plate into bottom plate with rubber mallet. It should click into place all along the length of the top plate.



5. Repeat installation on other side. When installing, exercise care not to damage top plate.



Operation:

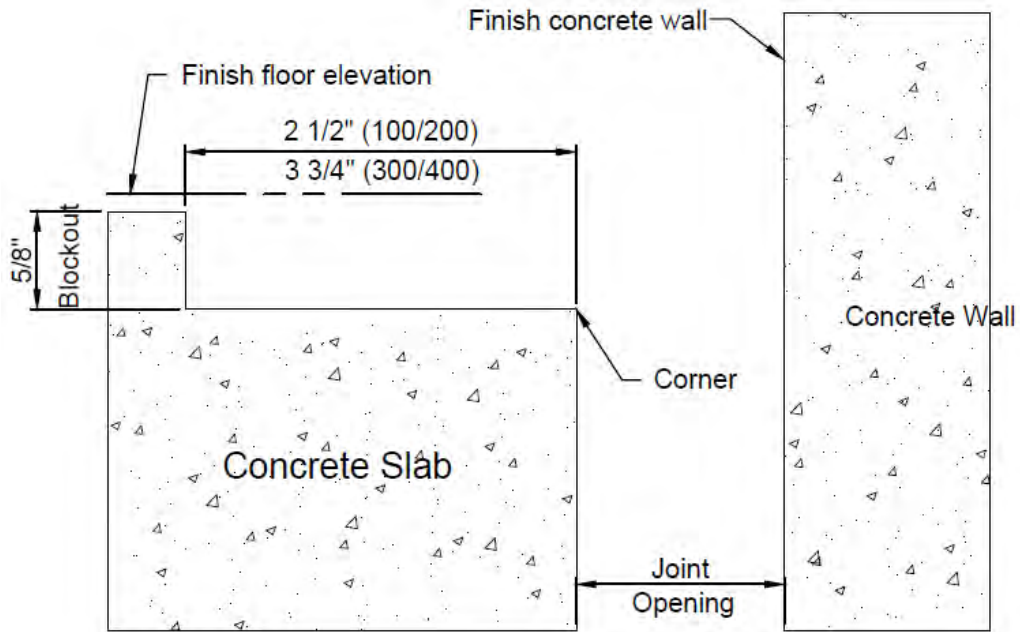
Expansion joints are designed and built for years of dependable service.

Maintenance:

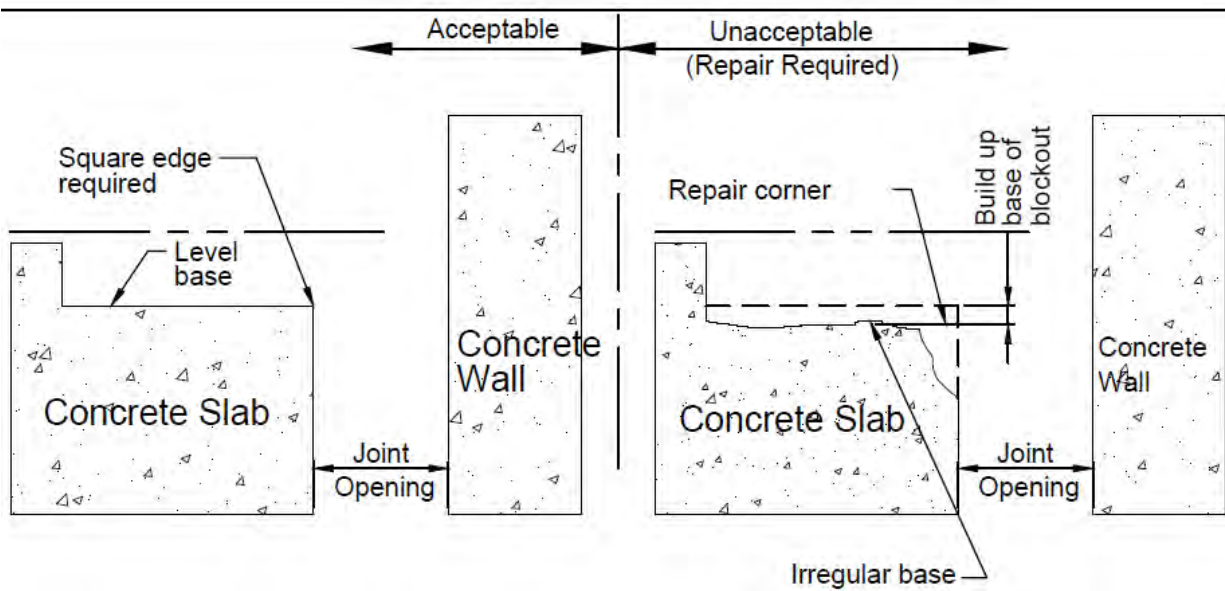
1. Expansion Joints should be cleaned routinely.
2. Exposed surfaces can be cleaned with a mild water-based cleaning solution. Wipe clean with a sponge or soft cloth.
3. Do not use steel wool or powdered abrasive cleaners as they will scratch the aluminum surface.
4. If any questions arise during the operation or maintenance of the products, please feel free to call our office for assistance.

Installation of Corner Condition

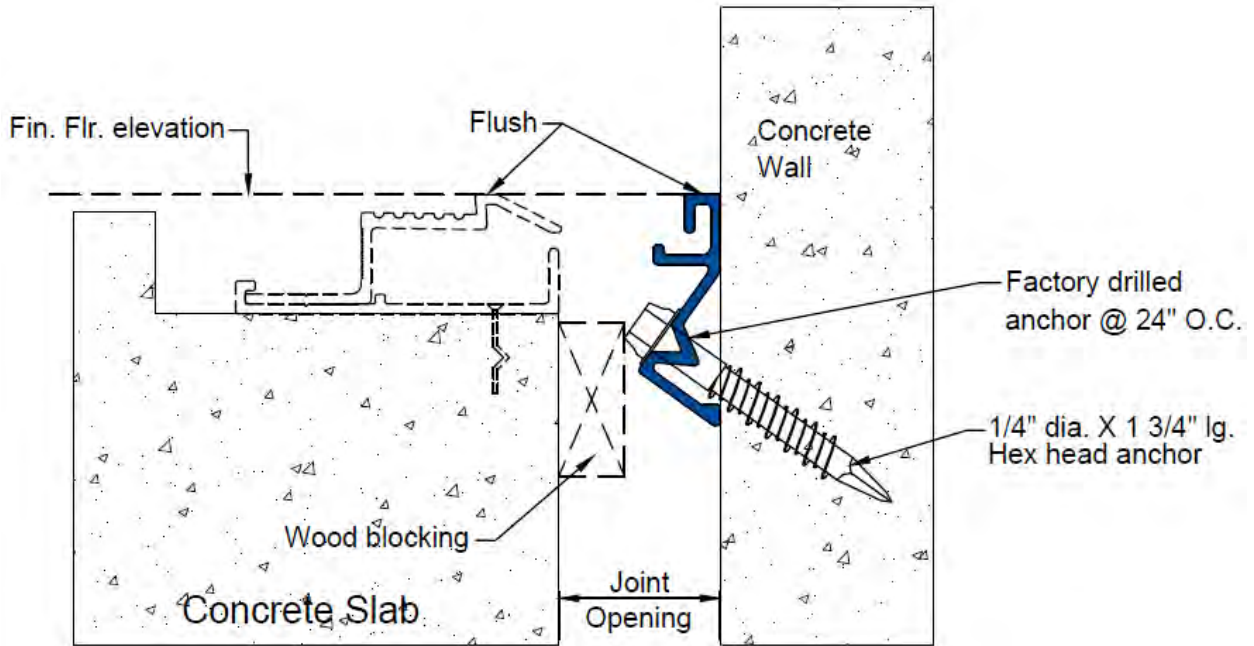
- 1 Prior to beginning work, installer shall inspect concrete slab corner and blockout for acceptability. For repair (if required), refer to step 2; also, measure joint opening for proper size as called for on shop drawings or CAD detail.



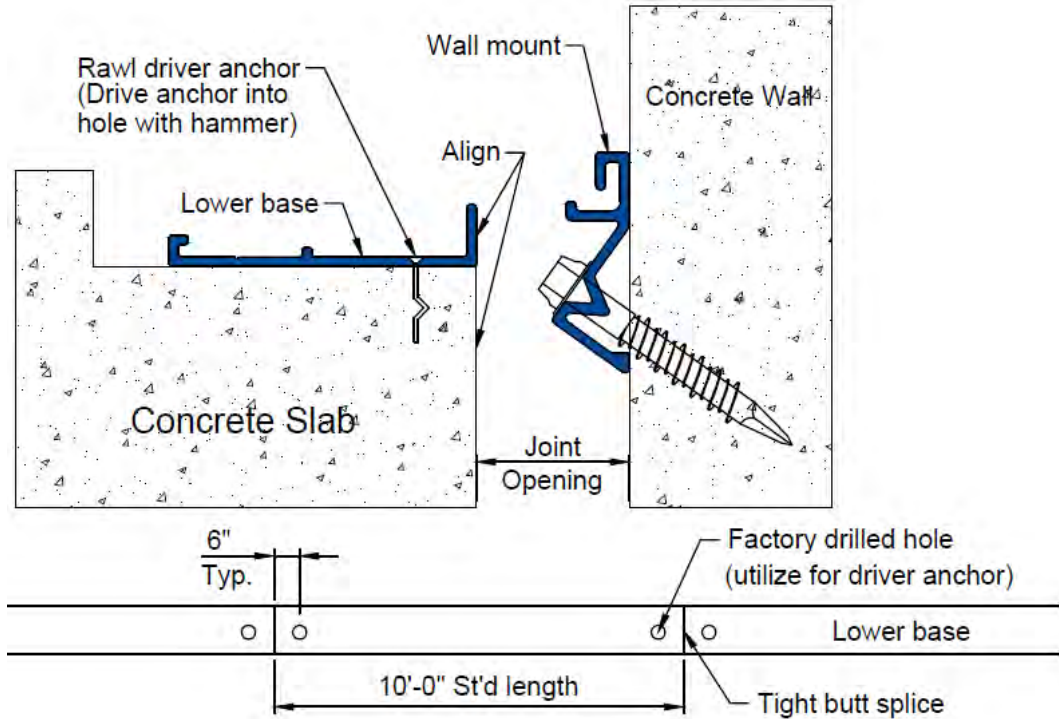
- 2 Utilizing concrete repair material, repair corner of concrete slab and blockout base following manufacturer's written instructions.



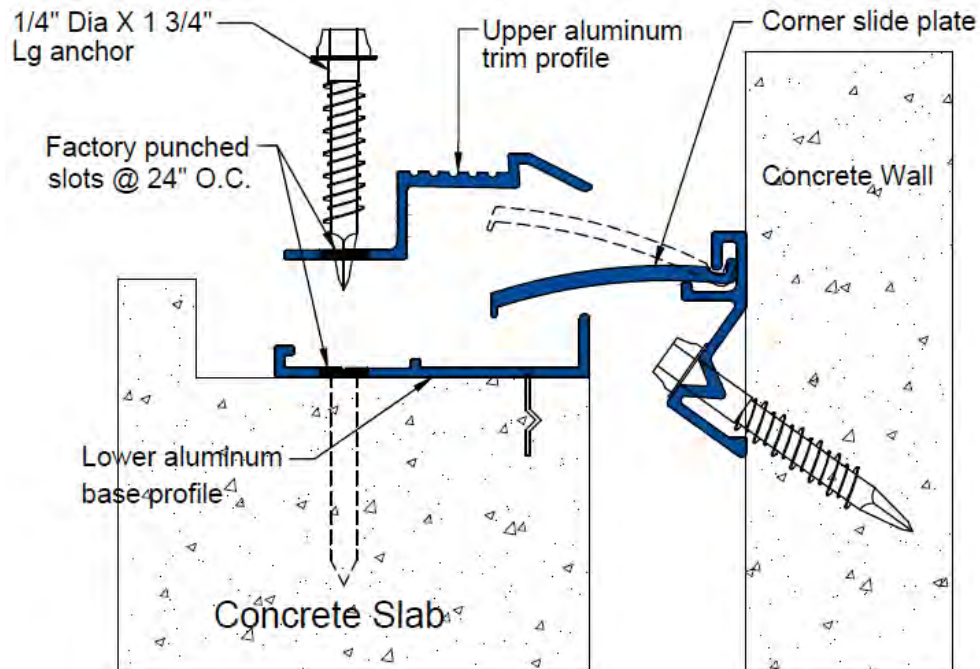
- Position and set aluminum wall mount extrusion flush with finish floor elevation. Secure position with wood blocking if necessary. Anchor extrusion to wall, utilizing manufacturer's recommended anchor.



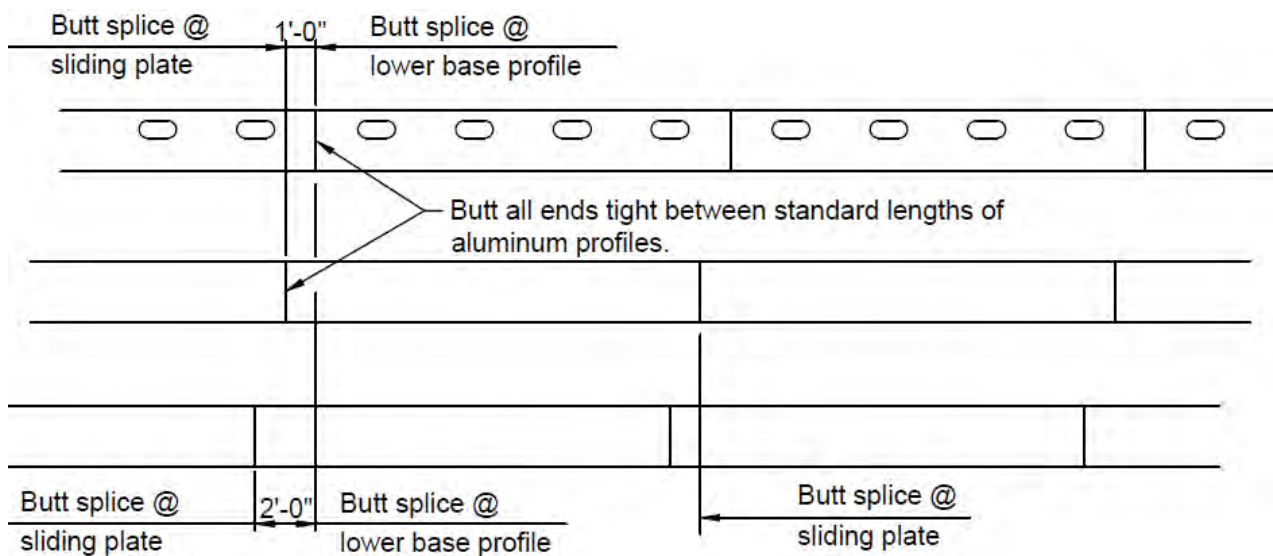
- Align lower base profile with edge of opening and secure to concrete slab utilizing driver anchor, location indicated below.



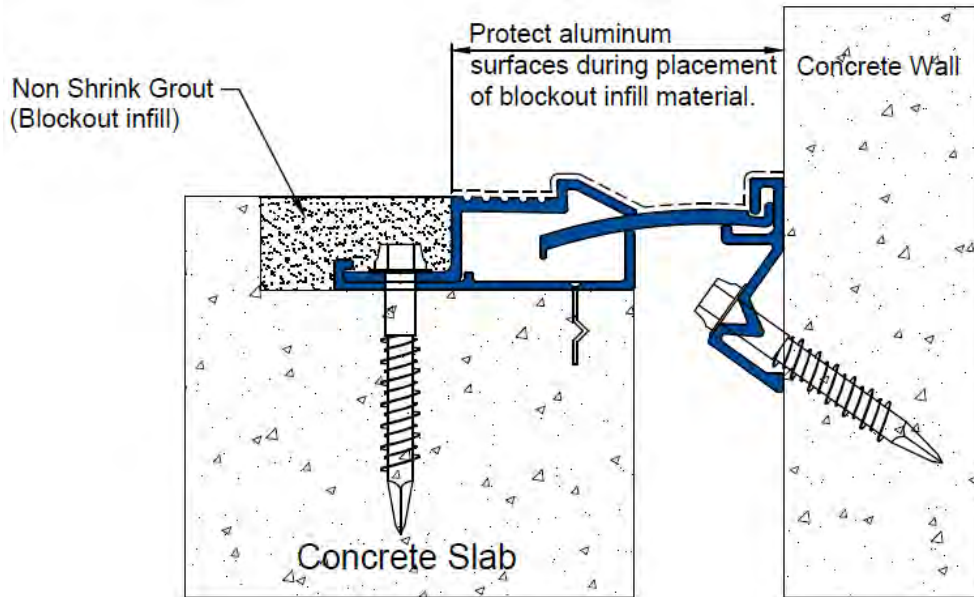
- 5 Place and center slide plate across opening. Secure its position by installing upper trim profile as shown. Review step 6 prior to installing concrete anchors for proper splicing procedures of aluminum components. **Note:** drill holes to proper depth for concrete anchors utilizing 3/16" diameter tapcon carbide masonry drill bits.



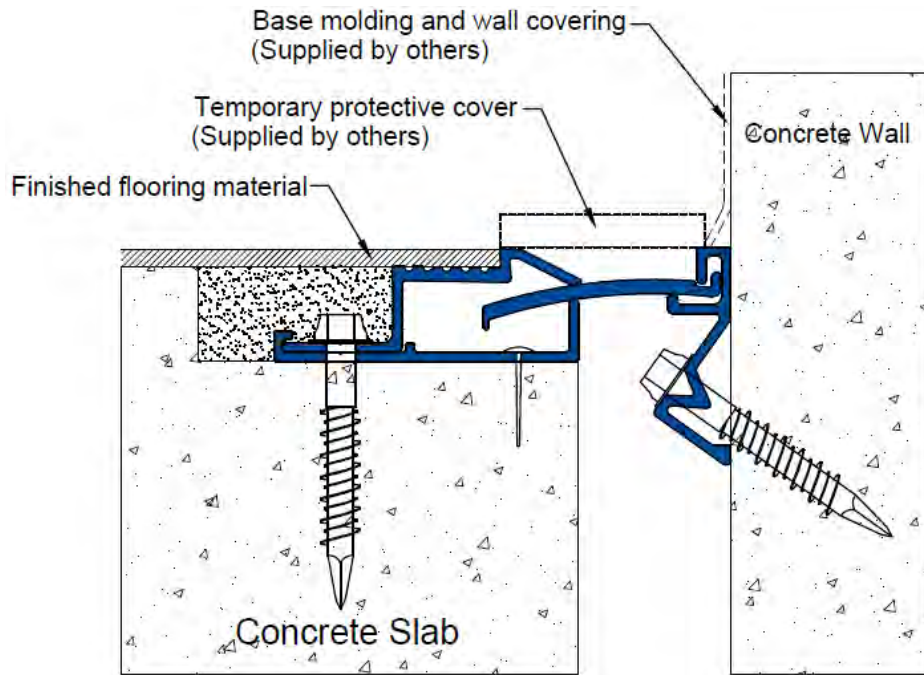
- 6 Stagger all splices in accordance with detail illustrated below to provide a stronger assembly and durable installation.



- 7 Install non-shrink Grout into blockout after aluminum profiles and concrete anchors have been installed.



- 8 Install finish flooring material.
Note: Installing contractor shall cover and protect finished expansion joint assembly from damage during installation of finished floor materials. The expansion joint assembly is a finished product. Damage to expansion joint finishes and components are excluded from warranty.





Erie Metal Specialties, Inc.
13311 Main Road
Akron, NY 14001
Phone: 716-542-3991
Fax: 716-542-3996
E-mail: sales@eriemetal.com
Website: www.eriemetal.com

SPECIFICATION

Section 07 95 13

Erie Metal Specialties, Interior Architectural Systems

Model(s) “ENBR”, “ENBR-W” Series

Architectural Horizontal Expansion Control System

PART 1 - GENERAL

1.01 Work Included

- A. The work shall consist of furnishing and installing expansion joints in accordance with the details shown on the plans and the requirements of the specifications. The joints are proprietary designs utilizing pre-engineered extruded metal components.
- B. Related Work
 - Miscellaneous and ornamental metals
 - Flashing and sheet metal
 - Concrete
 - Interior Finishes

1.02 Submittals

- A. Template Drawings - Submit typical expansion joint cross-section(s) indicating pertinent dimensioning, general construction, component connections, and anchorage methods.

1.03 Product Delivery, Storage and Handling

- A. Deliver products in each manufacturer's original, intact, labeled containers and store under cover in a dry location until installed. Store off the ground, protect from weather and construction activities.

1.04 Acceptable Manufacturer

- A. All joints shall be supplied by; Erie Metal Specialties, Inc. • 13311 Main Road • Akron • New York • 14001 • Phone (716) 542-3991 • Fax (716) 542-3996 • sales@eriemetal.com • www.eriemetal.com .
- B. Alternate manufacturers and their products will be considered, provided they meet the design concept and are produced of materials that are equal to or superior to those specified.



Erie Metal Specialties, Inc.
 13311 Main Road
 Akron, NY 14001
 Phone: 716-542-3991
 Fax: 716-542-3996
 E-mail: sales@eriemetal.com
 Website: www.eriemetal.com

C. Any proposed alternate systems must be submitted and receive approval 21 days prior to the bid. All post bid submittals will not be considered. This submission shall be in accordance with MATERIALS AND SUBSTITUTIONS.

- Any manufacturer wishing to submit for prior approval must provide the following:

A working 6" sample of the proposed system with a letter describing how system is considered superior to the specified system.

A project proposal drawing that illustrates the recommended alternate system installed in the floor construction that is specific to the project. Typical catalog cut sections will not be considered.

A Verifiable list of prior installations showing prior and successful experience with the proposed Systems.

Any substitution products not adhering to all specification requirements within, will not be considered.

PART 2 - PRODUCT

2.01 General

A. Provide horizontal expansion control system for floor application that accommodates verifiable movement equal to plus or minus 50 percent (min) of the nominal opening. All system components shall be extruded profiles utilizing snap fit design features and threaded hardware for proper assembly of permanent connections between upper and lower edge profiles. Systems not employing threaded hardware for assembly of edge components will not be permitted. Provide traffic bearing center slide plate exhibiting a curved design engineered to promote vertical displacement and rotational movement. Systems utilizing a flat center slide plate will not be permitted. Provide system capable of following horizontal changes in direction in high visible areas.

For horizontal floor locations furnish Erie Metal Specialties, Model(s) "ENBR" & "ENBR-W" as indicated on drawings.

Minimum Performance Criteria: Provide installed system meeting the following verifiable performance criteria:

1. Horizontal Movement: Plus or minus 50 percent of nominal opening.
2. Rotational Movement _____ degree rotation of edge member.
3. Vertical Displacement _____ inches (between opposing edge frames)
4. Min. uniform distributed live load: _____ PSF.



Erie Metal Specialties, Inc.
 13311 Main Road
 Akron, NY 14001
 Phone: 716-542-3991
 Fax: 716-542-3996
 E-mail: sales@eriemetal.com
 Website: www.eriemetal.com

- 5. Min. concentrated point load: _____ lbs
 (Note: Applied point load shall not cause center slide plate to deflect greater than 1/16 inch at its midpoint.)

2.02 Components and Materials

- A. Metal Components – All components shall be extruded aluminum confirming to the properties of ASTM B221, alloy 6063-T6.
- B. Anchors - Provide 1/4" dia. x 1 3/4" lg. (min.) concrete threaded anchor with hex head. Maximum spacing shall be 24" o.c.
- C. Accessories - Provide necessary and related parts including assembly hardware for complete installation.
- D. Block out Repair (recommended) - Utilize single component rapid strength repair mortar meeting the following data requirements.

Compressive strength, psi (ASTM C 109)

2 hours	1,500
24 hours	4,500
7 days	8,000
28 days	9,000

- E. Fire Barrier Assembly - Designed for indicated or required dynamic structural movement without material degradation or fatigue. Tested in maximum joint width conditions with a field splice in accordance with ASTM E-119 at a full rated period by a nationally recognized testing and inspecting organization. Supply appropriate Erie Metal Specialties Fire Barrier as governed by joint opening, fire rating and required test criteria.

2.03 Fabrication

- A. Metal components shall be shipped in 10 ft. lengths and shall be cut to length on jobsite where required. Components shall be miter cut in the field to conform to directional changes unless otherwise contracted with expansion joint manufacturer.
- B. Anchor slots at edge profile shall be shop punched in accordance with manufacturer's drawings.
- C. Fire Barriers - Ship manufacturer's standard assembly including fire caulks, sealants and anchoring hardware (if applicable) for the required hourly rating. Assemblies shall be miter cut in the field to accommodate changes in direction.



Erie Metal Specialties, Inc.
13311 Main Road
Akron, NY 14001
Phone: 716-542-3991
Fax: 716-542-3996
E-mail: sales@eriemetal.com
Website: www.eriemetal.com

2.04 Finishes

- A. Exposed aluminum components
Standard - Mill finish

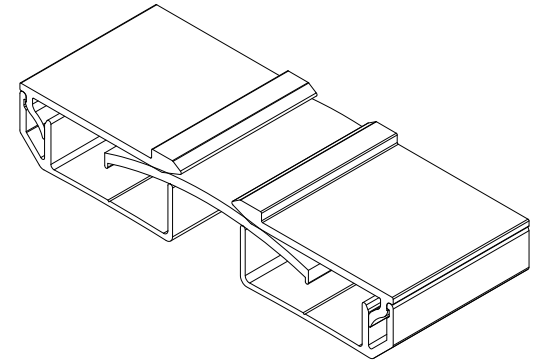
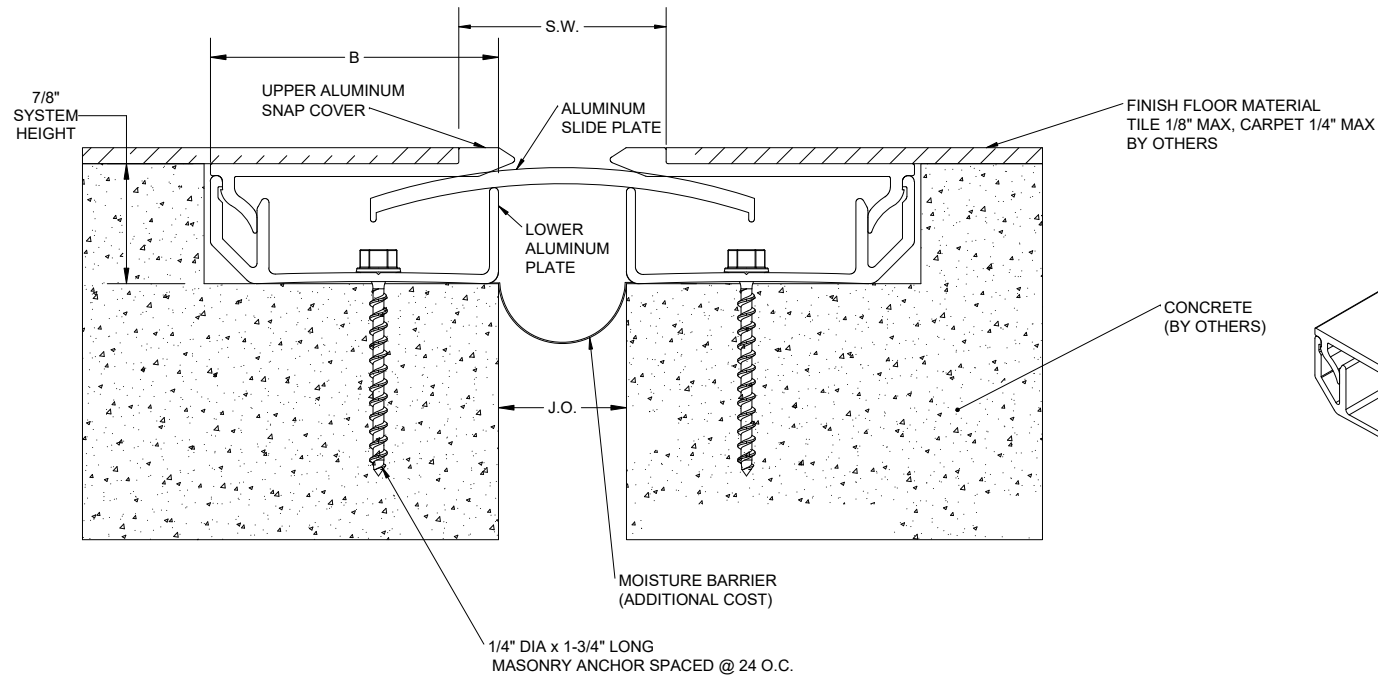
PART 3 - EXECUTION

3.01 Installation

- A. Protect all expansion joint component parts from damage during installation and placement of floor materials and thereafter until completion of structure.
- B. Expansion joint systems shall be installed in strict accordance with the manufacturer's typical details and instructions along with the advice of their qualified representative.
- C. Expansion joint systems shall be set to the proper width for the ambient temperature at the time of installation. This information is indicated in the contract plans.

3.02 Clean and Inspect

- A. Upon completing installation, the contractor shall clean all exposed metal surfaces with a suitable cleaner that will not harm or attack the finish. Contact manufacturer should questions arise regarding suitability of any cleaner type prior to its use.



Dimension Chart												
Model	Joint Opening (J.O.)						Total Movement		S.W.		B	
	At Install		Allow Min.		At Max		inches	mm	inches	mm	inches	mm
	inches	mm	inches	mm	inches	mm						
ENBR-100	1	25	1/2	13	2 1/4	57	1.75	44	1.6	41	2.5	64
ENBR-200	2	51	1/2	13	4 1/4	108	3.75	95	2.6	66	3.5	89

NO.	Description	Date	By
<p>The information contained herein is the proprietary property of ERIE METAL SPECIALTIES, INC. No portion of it may be reproduced by any means or used in any form except for the purpose for which it was intended. All rights of design and invention are hereby reserved.</p>			

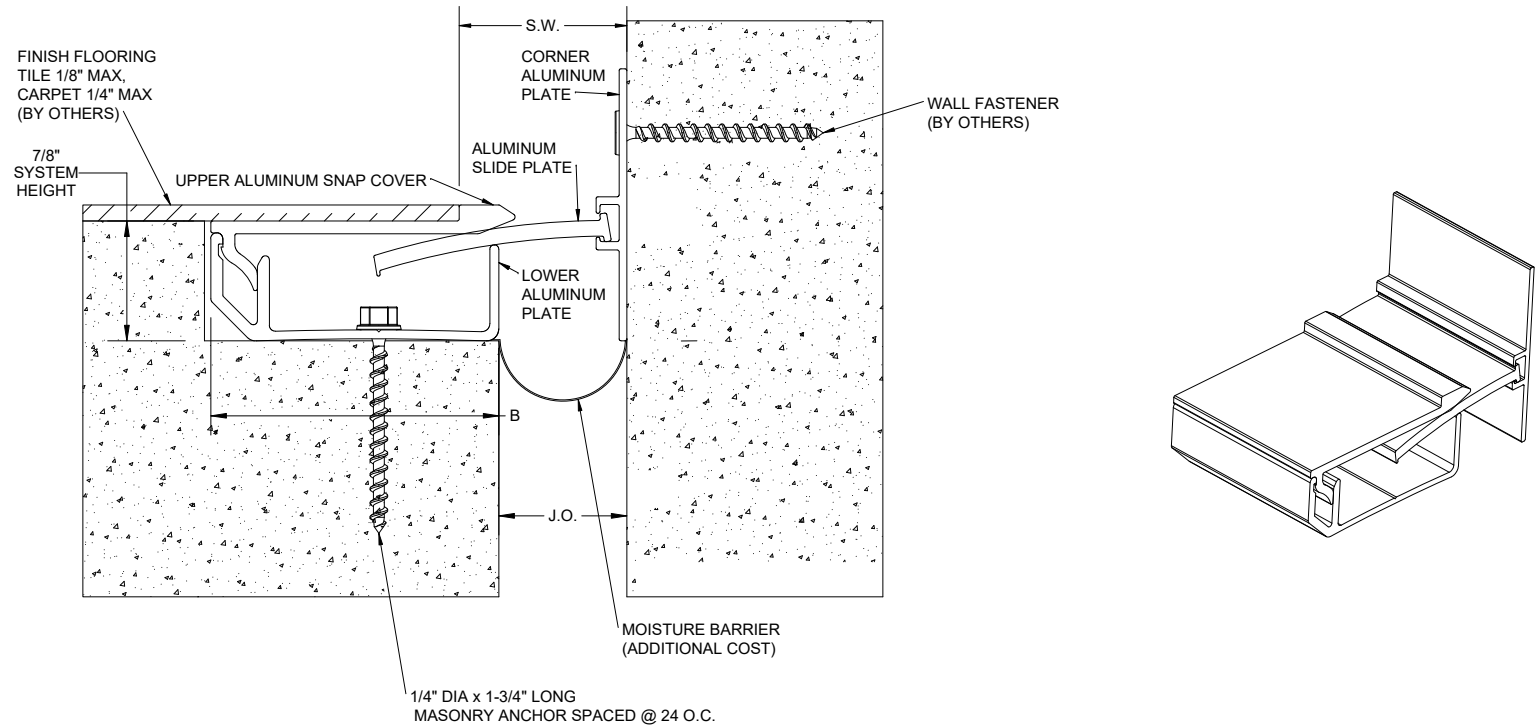


13311 Main Road • Akron • New York • 14001
 Phone: (716) 542-3991 • Fax: (716) 542-3996 • E-mail: sales@eriemetal.com

PROJECT:

TITLE:

Detailed by: BAF	Date: 10/21/17
Checked By: SLP	Date: 10/21/17
Scale: NTS	EMS Job #:
Sheet No.: 1 of 1	Drawing No.:



Dimension Chart

Model	Joint Opening (J.O.)						Total Movement		S.W.		B	
	At Install		Allow Min.		At Max		inches	mm	inches	mm	inches	mm
	inches	mm	inches	mm	inches	mm						
ENBR-100W	1	25	1/2	13	1 1/2	38	1	25	1.3	33	2.5	64
ENBR-200W	2	51	1	25	3 1/4	76	2.25	57	2.3	58	3.5	89

NO.			
-----	--	--	--

The information contained herein is the proprietary property of ERIE METAL SPECIALTIES, INC. No portion of it may be reproduced by any means or used in any form except for the purpose for which it was intended. All rights of design and invention are hereby reserved.



13311 Main Road • Akron • New York • 14001
 Phone: (716) 542-3991 • Fax: (716) 542-3996 • E-mail: sales@eriemetal.com

PROJECT:

TITLE:

Detailed by: BAF	Date: 10/21/17
Checked By: SLP	Date: 10/21/17
Scale: NTS	EMS Job #:
Sheet No.: 1 of 1	Drawing No.: