



SUBSTITUTION REQUEST

(After the Bidding/Negotiating Phase)

Project: _____ Substitution Request Number: _____

 From: _____
 To: _____ Date: _____

 A/E Project Number: _____
 Re: _____ Contract For: _____

Specification Title: _____ Description: _____
 Section: _____ Page: _____ Article/Paragraph: _____

Proposed Substitution: _____
 Manufacturer: _____ Phone: _____
 Address: _____
 Trade Name: _____ Model No.: _____
 Installer: _____ Phone: _____
 Address: _____

History: New product 1-4 years old 5-10 years old More than 10 years old

Differences between proposed substitution and specified product: _____

Point-by-point comparative data attached — REQUIRED BY A/E

Reason for not providing specified item: _____

Similar Installation:

Project: _____ Architect: _____
 Address: _____ Owner: _____
 _____ Date Installed: _____

Proposed substitution affects other parts of Work: No Yes; explain _____

Savings to Owner for accepting substitution: _____ (\$ _____).

Proposed substitution changes Contract Time: No Yes [Add] [Deduct] _____ days.

Supporting Data Attached: Drawings Product Data Samples Tests Reports _____

SUBSTITUTION REQUEST

(After the Bidding/Negotiating Phase — Continued)

The Undersigned certifies:

- Proposed substitution has been fully investigated and determined to be equal or superior in all respects to specified product.
 - Same warranty will be furnished for proposed substitution as for specified product.
 - Same maintenance service and source of replacement parts, as applicable, is available.
 - Proposed substitution will have no adverse effect on other trades and will not affect or delay progress schedule.
 - Cost data as stated above is complete. Claims for additional costs related to accepted substitution which may subsequently become apparent are to be waived.
 - Proposed substitution does not affect dimensions and functional clearances.
 - Payment will be made for changes to building design, including A/E design, detailing, and construction costs caused by the substitution.
 - Coordination, installation, and changes in the Work as necessary for accepted substitution will be complete in all respects.
-

Submitted by: _____

Signed by: _____

Firm: _____

Address: _____

Telephone: _____

Attachments:

A/E's REVIEW AND ACTION

- Substitution approved - Make submittals in accordance with Specification Section 01 25 00 Substitution Procedures.
- Substitution approved as noted - Make submittals in accordance with Specification Section 01 25 00 Substitution Procedures.
- Substitution rejected - Use specified materials.
- Substitution Request received too late - Use specified materials.

Signed by: _____ Date: _____

Additional Comments: Contractor Subcontractor Supplier Manufacturer A/E
 Other:

EFA150/EFDW Series Flooring Infill System

Interior Joints (Floor)

The Single Wing Hinged Flooring Infill System is designed with a hinged cover to accommodate horizontal and vertical thermal movement. This surface mounted system is designed to integrate with carpet and VCT flooring and provides a minimal sight line.

FEATURES

HINGED DESIGN Constructed with a single wing, hinged design to allow for limited vertical movement.

INTEGRATED FLOORING Designed to coordinate with main flooring material and accepts floor infill.

SURFACE MOUNT No block out is required. Simply screw onto subfloor.

DETAILS

MATERIAL 6063-T6 Aluminum

FINISH Mill

MOVEMENT

- Thermal: Horizontal and Vertical

MOUNTING Surface

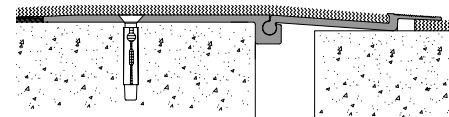
JOINT SIZE 3 inches

LENGTH 10 Linear Feet

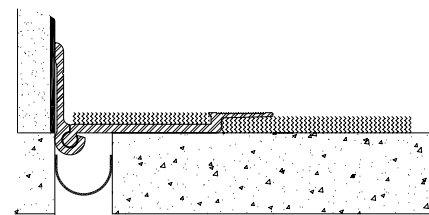
LOAD Pedestrian and Light Cart

INSTALLATION Floor

OPTIONS Moisture Barrier, Fire Barrier



Floor-to-Floor



Floor-to-Wall/Corner

MODELS

MODEL	INSTALLATION	JOINT SIZE AT MEAN T°F	EXPOSED SIGHT-LINE	FLOOR INFILL HEIGHT	MOVEMENT
EFA150-375	Floor-to-Floor	3" (76mm)	1.5" (38mm)	0.125" (3mm)	1" (25mm)
EFDW-125	Floor-to-Wall	3" (76mm)	1.5" (38mm)	0.125" (3mm)	1" (25mm)
EFA150-250	Floor-to-Floor	3" (76mm)	1.5" (38mm)	0.25" (6mm)	1" (25mm)
EFDW-250	Floor-to-Wall	3" (76mm)	1.5" (38mm)	0.25" (6mm)	1" (25mm)
EFA150-375	Floor-to-Floor	3" (76mm)	1.5" (38mm)	0.375" (10mm)	1" (25mm)
EFDW-375	Floor-to-Wall	3" (76mm)	1.5" (38mm)	0.375" (10mm)	1" (25mm)



Erie Metal Specialties, Inc.
13311 Main Road
Akron, NY 14001

Phone: 716-542-3991
Website: www.eriametal.com
E-Mail: sales@eriametal.com



Erie Metal Specialties, Inc.
13311 Main Road
Akron, NY 14001

Phone: 716-542-3991
Website: www.eriametal.com
E-Mail: sales@eriametal.com

EFA Series Installation Instructions

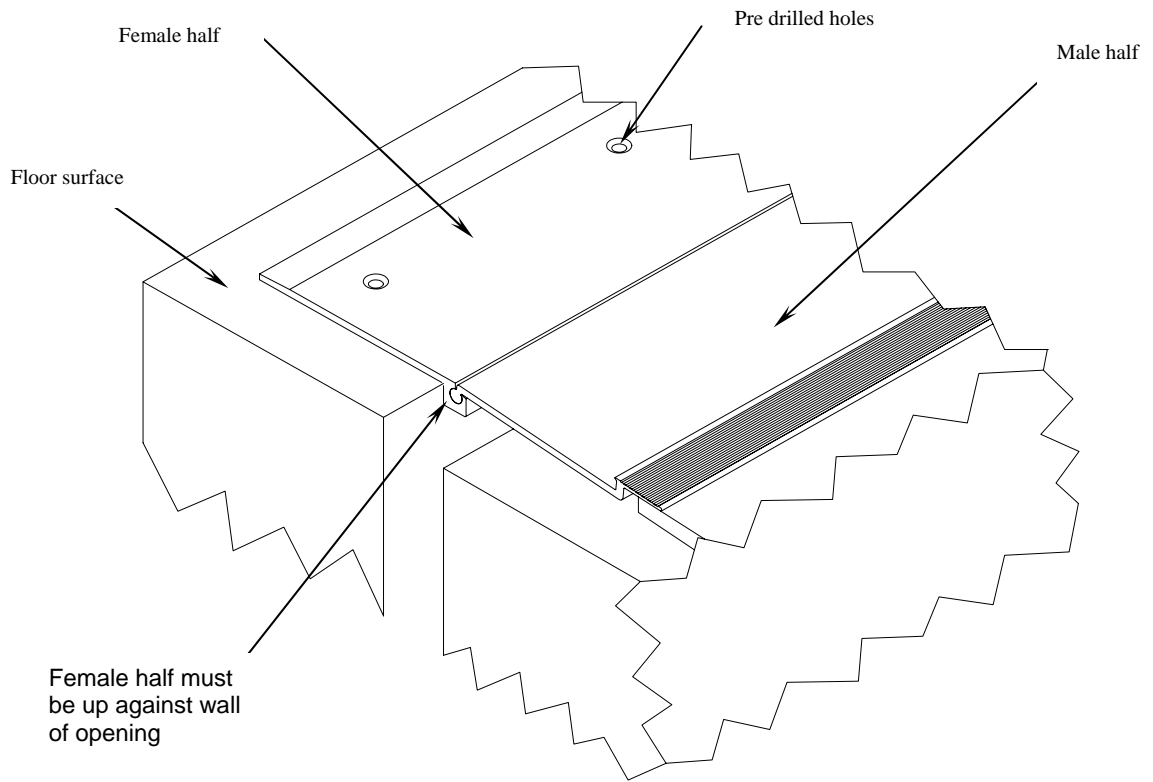


DIAGRAM 1

EMS supplies these items along with expansion joints:

1. Sleeve anchors, 3/8
2. Fire barrier if required
3. Fire Barrier

Materials needed by installer:

1. Electric drill
2. Tape measure or ruler
3. Broom and dust pan or vacuum
4. Chop saw to cut joints to length
5. 3/8" masonry bit
6. Flash Patch & utensils
7. Torque wrench and allen fitting

EFA Series Installation Instructions (continued)

Installation instructions

1. Insure that the floor is smooth. High spots should be ground down and low spots filled in. Make sure floor is clean by sweeping and/or vacuuming floor.
2. Cut and fit expansion joints to required length, if installing more than 1 piece lay out entire run to insure proper alignment. Make sure the female half is up against inside wall of opening (see diagram). Also the female half should always be on the floor surface that is always above the other surface that the male half sits on. The male half can not move above the female half.
3. When assembling the 2 halves together WD40 should be used as a lubricant. If necessary you may need to use force to assemble. Pound together using a hammer, never hammer directly onto expansion joint (damage will occur). Prior to drilling the 2 halves must be assembled.
4. Drill end holes first, this insures that the expansion joint will not move and alignment with other joints is obtained. Expansions joints are supplied with predrilled holes (see diagram). Drill holes to a depth of 2.50 inches, using correct drill bit, 3/8 concrete drill bit.
5. Once anchors are in the end holes, drill remaining holes and install anchors. Recommending torquing anchors to 35-ft lbs.
6. Flash patch on the female side (anchored side) and feather back 2-3 ft to assure a smooth transition.



Erie Metal Specialties, Inc.
13311 Main Road
Akron, NY 14001
Phone: 716-542-3991
Fax: 716-542-3996
E-mail: sales@eriemetal.com
Website: www.eriemetal.com

SPECIFICATION

Section 07 95 13

Erie Metal Specialties, Interior Architectural Systems

Model "FA150" Series Hinged Aluminum Cover Plate

Hinged Horizontal Cover Plate Systems

PART 1 - GENERAL

1.01 Work Included

- A. The work shall consist of furnishing and installing expansion joints in accordance with the details shown on the plans and the requirements of the specifications. The joints are proprietary designs utilizing preformed metal components and anchors.
- B. Related Work
 - Cast-in-place concrete
 - Miscellaneous and ornamental metals
 - Flashing and sheet metal

1.02 Submittals

- A. Template Drawings -Submit typical expansion joint cross-section indicating pertinent dimensioning, general construction, component connections, and anchorage methods.

1.03 Product Delivery, Storage and Handling

- A. Deliver products in each manufacturer's original, intact, labeled containers and store under cover in a dry location until installed. Store off the ground, protect from weather and construction activities.

1.04 Acceptable Manufacturer

- A. All joints shall be supplied by; Erie Metal Specialties, Inc. • 13311 Main Road • Akron • New York • 14001 • Phone (716) 542-3991 • Fax (716) 542-3996 • sales@eriemetal.com • www.eriemetal.com .
- B. Alternate manufacturers and their products will be considered, provided they meet the design concept and are produced of materials that are equal to or superior to those called for in the base product specification.
- C. Any proposed alternate systems must be submitted and receive approval 21 days prior to the bid. All post bid submittals will not be considered. This submission shall be in accordance with MATERIALS AND SUBSTITUTIONS.



Erie Metal Specialties, Inc.
13311 Main Road
Akron, NY 14001
Phone: 716-542-3991
Fax: 716-542-3996
E-mail: sales@eriemetal.com
Website: www.eriemetal.com

-Any manufacturer wishing to submit for prior approval must provide the following:

A working 6" sample of the proposed system with a letter describing how system is considered superior to the specified system.

A project proposal drawing that illustrates the recommended alternate system installed in the floor construction that is specific to the project. Typical catalog cut sections will not be considered.

A Verifiable list of prior installations showing prior and successful experience with the proposed systems.

Any substitution products not adhering to all specification requirements within, will not be considered.

1.05 Quality Assurance

- A. Manufacturer: Shall have a minimum ten (10) years experience specializing in the design and manufacture of Architectural Expansion Control Systems.

PART 2 - PRODUCT

2.01 General

Provide horizontal expansion control system that accommodates two directional thermal movement. Profiles shall incorporate an integral hinge feature to accommodate vertical movement or uneven slab conditions.

2.02 Components and Materials

- A. Aluminum Extrusions – Material to conform to properties of ASTM B221; alloy 6005-T5 or 6063-T6.
- B. Moisture Protection (if required) – Provide EPDM sized to accommodate opening width and movement.
- C. Anchorage - Provide minimum ¼" diameter concrete expansion anchor at maximum 18" c.c. spacing to secure aluminum cover to floor slab.
 - 1) Corner Condition Wall Mount Profile
 - 2) Anchor to be supplied by installing contractor. Anchor type to be determined by wall construction.
- D. Fire Barrier Assembly - Designed to provide the required fire endurance rating, minimize passage of smoke and accommodate dynamic movement without stress or degradation to its components. Test



Erie Metal Specialties, Inc.
 13311 Main Road
 Akron, NY 14001
 Phone: 716-542-3991
 Fax: 716-542-3996
 E-mail: sales@eriemetal.com
 Website: www.eriemetal.com

system in maximum joint width incorporating a field splice. Supply Erie Metal Specialties Fire Barrier System as governed by joint opening, test requirements and fire rating.

- E. Concrete Slab Repair(recommended)-Utilize manufacturer single component rapid strength repair mortar meeting the following data requirements.

Compressive strength, psi (ASTM C 109)

2 hours	1,500
24 hours	4,500
7 days	8,000
28 days	9,000

2.03 Fabrication

- A. Extrusions to be shipped in standard 10 ft. lengths and shall be cut to length on jobsite where required. Profiles shall be miter cut in the field to conform to directional changes unless otherwise contracted with expansion joint manufacturer.
- B. Anchor holes for corner condition wall mount profile shall be countersunk and field drilled by installing contractor at 12" o.c.
- C. Fire Barriers - Ship manufacturer's standard assembly for the required hourly rating. Fire barrier shall be miter cut in the field to accommodate changes in direction.

2.04 Finishes

- A. All Profiles
 - 1. Standard - Aluminum extrusions shall be supplied in mill finish.

PART 3 - EXECUTION

3.01 Installation

- A. Verify that project conditions are suitable for proper installation of system.
- B. Protect all expansion joint component parts from damage during installation and placement of finish floor materials and thereafter until completion of structure
- C. Joint systems shall be installed in strict accordance with the manufacturer's typical details and instructions along with the advice of their qualified representative.

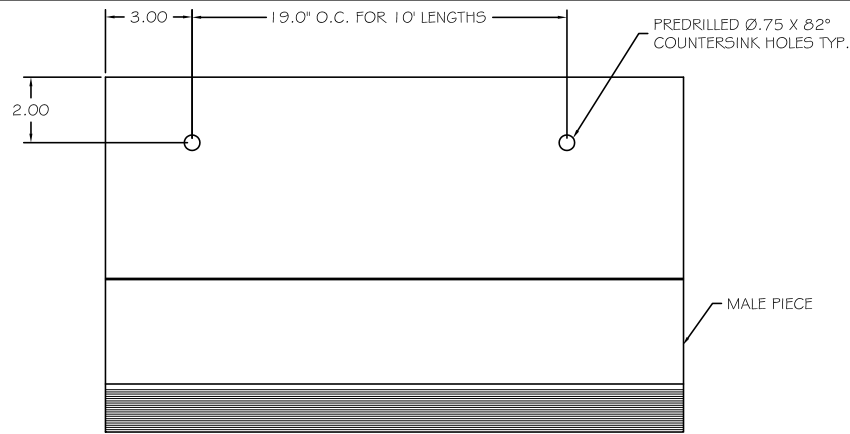


Erie Metal Specialties, Inc.
13311 Main Road
Akron, NY 14001
Phone: 716-542-3991
Fax: 716-542-3996
E-mail: sales@eriemetal.com
Website: www.eriemetal.com

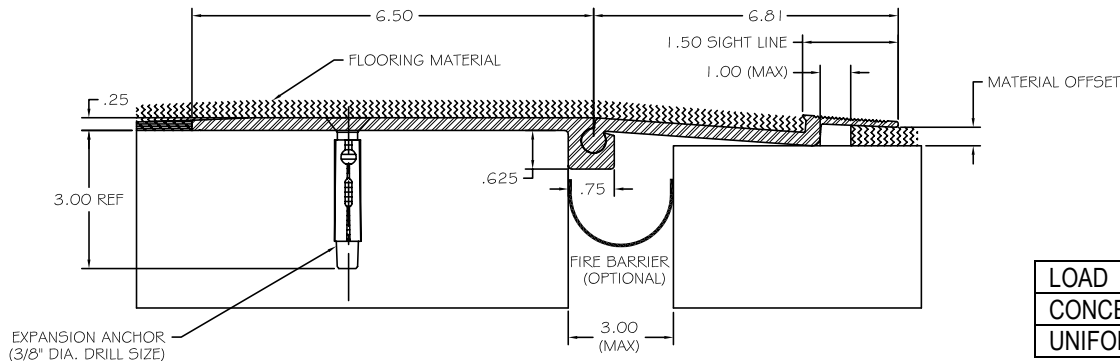
D. Anchor holes for corner condition wall mount profile shall be countersunk and field drilled by installing contractor at 12" o.c.

3.02 Clean and Inspect

A. Upon completing installation, the contractor shall clean all exposed metal surfaces with a suitable cleaner that will not harm or attack the finish. Contact manufacturer should questions arise regarding suitability of any cleaner type prior to its use.



PLAN VIEW
(NOT TO SCALE)



SURFACE CROSS SECTION
NOT TO SCALE

NOTE: MALE PIECE RESTS ON LOWER PIECE (WHEN APPLICABLE)
APPROX. 2" VERTICAL MOVEMENT WITH HINGE JOINT (10% TOTAL ROTATIONAL MOVEMENT)

SPECIFICATIONS

- 6063-T6 ALUMINUM
- MILL FINISH
- SUPPLIED WITH EXPANSION ANCHORS
- STANDARD LENGTH=10' / SECTION

PART NUMBER	MATERIAL OFFSET
EFA150-125	.125
EFA150-250	.250
EFA150-375	.375

LOAD	JOINT OPENING		
	1"	2"	3"
CONCENTRATED (MAX)	325#	250#	200#
UNIFORM (MAX)	200 PSI	150 PSI	100 PSI

NO.			

The information contained herein is the proprietary property of ERIE METAL SPECIALTIES, INC. No portion of it may be reproduced by any means or used in any form except for the purpose for which it was intended. All rights of design and invention are hereby reserved.

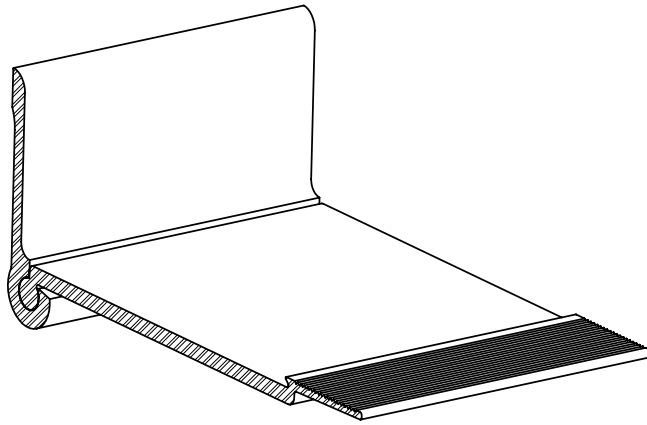


13311 Main Road • Akron • New York • 14001
Phone: (716) 542-3991 • Fax: (716) 542-3996 • E-mail: sales@eriemetal.com

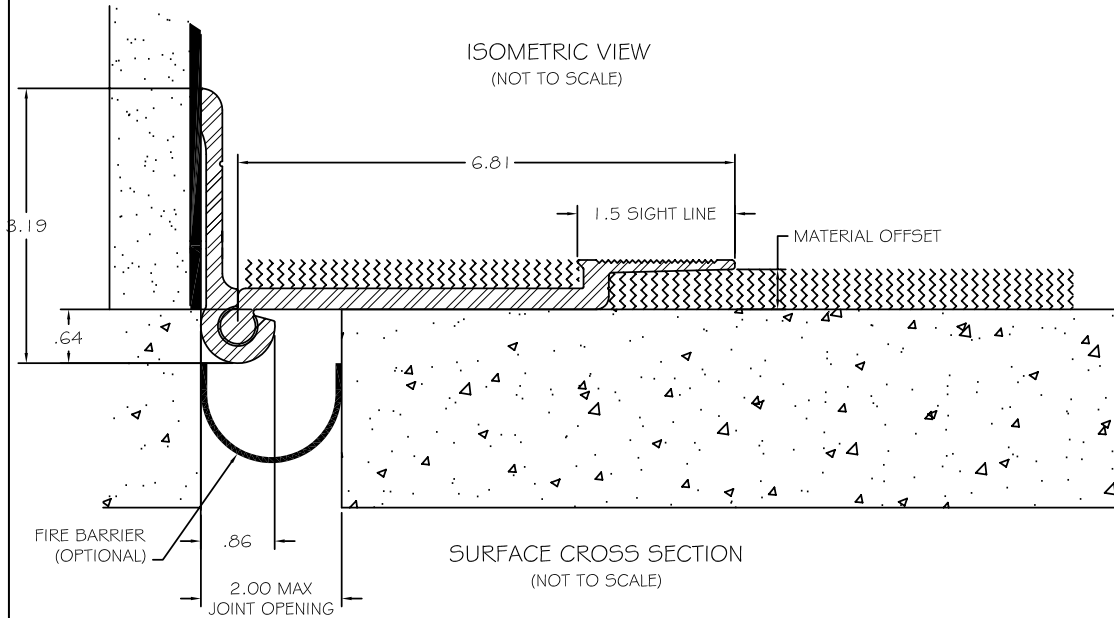
PROJECT:

TITLE:

Detailed by: BAF	Date: 10/21/17
Checked By: SLP	Date: 10/21/17
Scale: NTS	EMS Job #:
Sheet No.: 1 of 1	Drawing No.:



ISOMETRIC VIEW
(NOT TO SCALE)



SPECIFICATIONS

- 6063-T6 ALUMINUM
- MILL FINISH
- SUPPLIED WITH EXPANSION ANCHORS
- STANDARD LENGTH=10' / SECTION
- MOUNTING HARDWARE SUPPLIED BY OTHERS, SPACED 19" O.C. MAX

PART NUMBER	MATERIAL OFFSET
EFDW-125	.125
EFDW-250	.250
EFDW-375	.375

MAX LOAD @ 2" JOINT OPENING	
CONCENTRATED	400#
UNIFORM	150 PSI

NO.	Description	Date	By

The information contained herein is the proprietary property of ERIE METAL SPECIALTIES, INC. No portion of it may be reproduced by any means or used in any form except for the purpose for which it was intended. All rights of design and invention are hereby reserved.



13311 Main Road • Akron • New York • 14001
 Phone: (716) 542-3991 • Fax: (716) 542-3996 • E-mail: sales@eriemetal.com

PROJECT:

TITLE:

Detailed by: BAF	Date: 10/21/17
Checked By: SLP	Date: 10/21/17
Scale: NTS	EMS Job #:
Sheet No.: 1 of 1	Drawing No.: