



SUBSTITUTION REQUEST

(After the Bidding/Negotiating Phase)

Project: _____ Substitution Request Number: _____

 From: _____
 To: _____ Date: _____

 A/E Project Number: _____
 Re: _____ Contract For: _____

Specification Title: _____ Description: _____
 Section: _____ Page: _____ Article/Paragraph: _____

Proposed Substitution: _____
 Manufacturer: _____ Phone: _____
 Address: _____
 Trade Name: _____ Model No.: _____
 Installer: _____ Phone: _____
 Address: _____

History: New product 1-4 years old 5-10 years old More than 10 years old

Differences between proposed substitution and specified product: _____

Point-by-point comparative data attached — REQUIRED BY A/E

Reason for not providing specified item: _____

Similar Installation:

Project: _____ Architect: _____
 Address: _____ Owner: _____
 _____ Date Installed: _____

Proposed substitution affects other parts of Work: No Yes; explain _____

Savings to Owner for accepting substitution: _____ (\$ _____).

Proposed substitution changes Contract Time: No Yes [Add] [Deduct] _____ days.

Supporting Data Attached: Drawings Product Data Samples Tests Reports _____

SUBSTITUTION REQUEST

(After the Bidding/Negotiating Phase — Continued)

The Undersigned certifies:

- Proposed substitution has been fully investigated and determined to be equal or superior in all respects to specified product.
 - Same warranty will be furnished for proposed substitution as for specified product.
 - Same maintenance service and source of replacement parts, as applicable, is available.
 - Proposed substitution will have no adverse effect on other trades and will not affect or delay progress schedule.
 - Cost data as stated above is complete. Claims for additional costs related to accepted substitution which may subsequently become apparent are to be waived.
 - Proposed substitution does not affect dimensions and functional clearances.
 - Payment will be made for changes to building design, including A/E design, detailing, and construction costs caused by the substitution.
 - Coordination, installation, and changes in the Work as necessary for accepted substitution will be complete in all respects.
-

Submitted by: _____

Signed by: _____

Firm: _____

Address: _____

Telephone: _____

Attachments:

A/E's REVIEW AND ACTION

- Substitution approved - Make submittals in accordance with Specification Section 01 25 00 Substitution Procedures.
- Substitution approved as noted - Make submittals in accordance with Specification Section 01 25 00 Substitution Procedures.
- Substitution rejected - Use specified materials.
- Substitution Request received too late - Use specified materials.

Signed by: _____ Date: _____

Additional Comments: Contractor Subcontractor Supplier Manufacturer A/E
 Other:

ENWJ Series Wall System

Interior Joints (Wall)



Aluminum Wall and Ceiling system is capable of thermal movement. It mounts easily after final wall surface is complete. Standard with a clear anodize finish.

FEATURES

COORDINATING CORNERS Available with corner option for a complete solution.

ARCHITECTURAL AESTHETICS The sliding cover plate with a clear anodized finish provides a high-end appearance.

CONTINUOUS SIGHT LINE This system can be used on walls, ceilings and corners to provide seamless and continuous aesthetics.

DETAILS

MATERIAL 6063-T6 Aluminum

FINISH Clear Anodize

MOVEMENT

- Thermal: Horizontal

MOUNTING Surface

JOINT SIZE 1 inch to 3 inches

LENGTH 10 Linear Feet

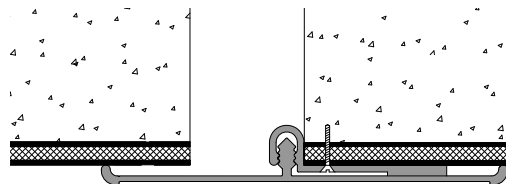
APPLICATION Interior

INSTALLATION Wall or Ceiling

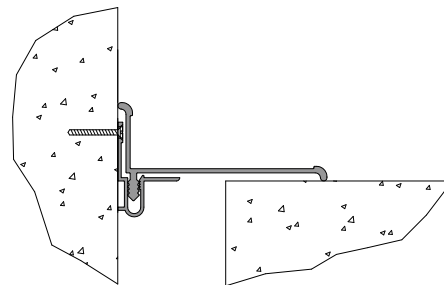
OPTIONS Moisture Barrier, Fire Barrier

MODELS

MODEL	INSTALLATION	JOINT SIZE AT MEAN T°F	SYSTEM WIDTH	TOTAL MOVEMENT
ENWJ-100	Wall-to-Wall	1" (25mm)	3" (76mm)	0.5" (13mm)
ENWJ-100W	Wall-to-Ceiling/Corner	1" (25mm)	3" (76mm)	0.5" (13mm)
ENWJ-150	Wall-to-Wall	1.5" (38mm)	4" (102mm)	2" (51mm)
ENWJ-200	Wall-to-Wall	2" (51mm)	5.75" (146mm)	2" (51mm)
ENWJ-200W	Wall-to-Ceiling/Corner	2" (51mm)	5.75" (146mm)	2" (51mm)
ENWJ-300	Wall-to-Wall	3" (76mm)	7" (178mm)	3" (76mm)
ENWJ-300W	Wall-to-Ceiling/Corner	3" (76mm)	7" (178mm)	3" (76mm)



Wall-to-Wall



Wall/Ceiling Corner



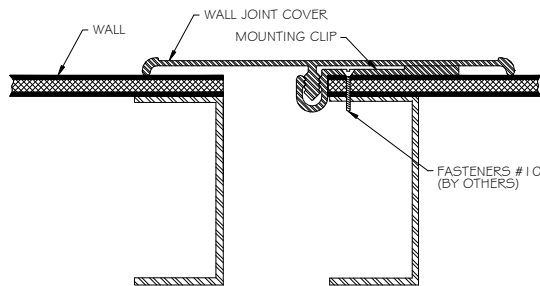
Erie Metal Specialties, Inc.
13311 Main Road
Akron, NY 14001

Phone: 716-542-3991
Website: www.eriametal.com
E-Mail: sales@eriametal.com

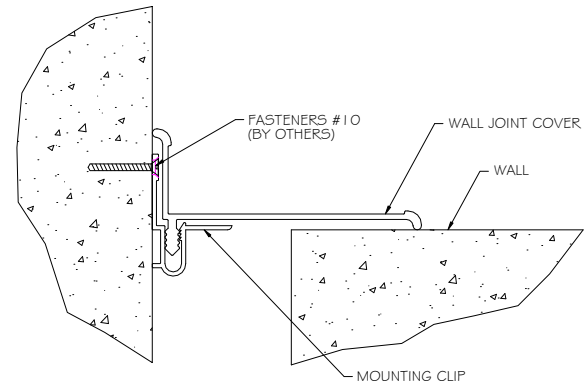


Erie Metal Specialties, Inc.
13311 Main Road
Akron, NY 14001

Phone: 716-542-3991
Website: www.eriemetal.com
E-Mail: sales@eriemetal.com



ENWJ Series



ENJW-W Series

EMS supplies these items along with expansion joints:

1. Mounting clips

Materials needed by installer:

1. Electric drill
2. Tape measure or ruler
3. Flathead self-tapping or drywall screws
4. Rubber mallet
5. Chop saw to cut joints to length
6. Plumb bob or level

Installation instructions

1. Measure floor to ceiling height and cut the joint cover to length.
2. Install the mounting clips on one side of the opening, spacing the clips approximately 24.00 inches on center. Use the edge of the joint cover to align the clips and assure that the installation is plumb. For corner condition, align underside of mounting clip to surface of wall.
3. Place the joint cover over the opening, aligning the male portion of the cover with the female portion of the mounting clip. Set the cover using a rubber mallet. Avoid excessive force, which may damage the joint cover.
4. The clear anodized cover may be left fully exposed or the recessed portion may be filled with wall covering, leaving a ¼ inch radius edge exposed.



Erie Metal Specialties, Inc.
13311 Main Road
Akron, NY 14001
Phone: 716-542-3991
Fax: 716-542-3996
E-mail: sales@eriemetal.com
Website: www.eriemetal.com

SPECIFICATION

Section 07 95 13

Erie Metal Specialties Interior Architectural Systems

Model "ENWJ" Series for Wall and Ceiling

Interior Expansion Control Systems

PART 1 - GENERAL

1.01 Work Included

- A. The work shall consist of furnishing and installing expansion joints in accordance with the details shown on the plans and the requirements of the specifications. The joints are proprietary designs utilizing preformed metal components and gaskets.
- B. Related Work
 - Gypsum Board
 - Miscellaneous and ornamental metals
 - Flashing and sheet metal
 - Sealants and caulking

1.02 Submittals

- A. Template Drawings - Submit typical seismic joint cross-section(s) indicating pertinent dimensioning, general construction, component connections, and anchorage methods.

1.03 Product Delivery, Storage and Handling

- A. Deliver products in each manufacturer's original, intact, labeled containers and store under cover in a dry location until installed. Store off the ground, protect from weather and construction activities.

1.04 Acceptable Manufacturer

- A. All joints shall be supplied by; Erie Metal Specialties, Inc. • 13311 Main Road • Akron • New York • 14001 • Phone (716) 542-3991 • Fax (716) 542-3996 • sales@eriemetal.com • www.eriemetal.com .
- B. Alternate manufacturers and their products will be considered, provided they meet the design concept and are produced of materials that are equal to or superior to those called for in the base product specification.



Erie Metal Specialties, Inc.
13311 Main Road
Akron, NY 14001
Phone: 716-542-3991
Fax: 716-542-3996
E-mail: sales@eriemetal.com
Website: www.eriemetal.com

- C. Any proposed alternate systems must be submitted and receive approval 21 days prior to the bid. All post bid submittals will not be considered. This submission shall be in accordance with MATERIALS AND SUBSTITUTIONS.

- Any manufacturer wishing to submit for prior approval must provide the following:

1. A working 6" sample of the proposed system with a letter describing how system is considered superior to the specified system.
2. A project proposal drawing that illustrates the recommended alternate system installed in the wall or ceiling construction that is specific to the project. Typical catalog cut sections will not be considered.
3. Verifiable list of prior installations showing prior and successful experience with the proposed systems.
4. Any substitution products not adhering to all specification requirements within, will not be considered.

1.05 Quality Assurance

- A. Warranty: The expansion control system's performance shall be warranted for a period of 1 year. Installation shall be in strict accordance with manufacturer's technical specifications, details, installation instructions and general procedures in effect for normal intended usage and suitable applications under specified design movements and loading conditions.
- B. Manufacturer: Shall have a minimum ten (10) years experience specializing in the design and manufacture of Architectural Expansion Control Systems.
- C. Maintenance: The manufacturer shall provide the owner-operator a preventive maintenance guideline for Expansion Control Systems.

PART 2 - PRODUCT

2.01 General

- A. Provide wall and ceiling expansion control system that accommodates thermal movement. The system shall be capable of following changes in direction utilizing preformed or extruded metal profiles and integral snap-fit features for ease of component assembly.

For walls, ceilings and soffits furnish Erie Metal Specialties, Expansion Control System, Model "ENWJ" as manufactured as indicated on drawings.

2.02 Components and Materials



Erie Metal Specialties, Inc.
13311 Main Road
Akron, NY 14001
Phone: 716-542-3991
Fax: 716-542-3996
E-mail: sales@eriemetal.com
Website: www.eriemetal.com

- A. Aluminum Exposed Upper Face Component:
Material shall be extruded aluminum confirming to properties of ASTM B221 alloy 6063-T6.

- B. Clip and anchors - Installing contractor to provide and utilize drywall screws appropriate for the wall studs. Maximum spacing shall be 18" c.c.

- C. Accessories - Provide necessary and related parts required for complete installation.

- D. Fire Barrier Assembly - Designed to provide the required fire endurance rating, minimize passage of smoke and accommodate dynamic movement without stress or degradation to its components. Test system in maximum joint width incorporating a field splice. Supply Fire Barrier System as governed by joint opening, test requirements and fire rating.

2.03 Fabrication

- A. Metal components system shall be shipped in 10 ft. lengths and shall be cut to length on jobsite where required. Components shall be miter cut in the field to conform to directional changes unless otherwise contracted with expansion joint manufacturer.

- B. Anchor holes at lower edge component shall be field drilled in accordance with manufacturer's drawings.

- C. Fire Barriers - Ship manufacturer's standard assembly including fire caulks, sealants (if applicable) and hardware for the required hourly rating. Assemblies shall be miter cut in the field to accommodate changes in direction.

2.04 Finishes

- A. Exposed Component
 - Aluminum Standard: - clear anodized finish in accordance with AA-M10 C22 A31 Class II (0.4 - 0.7 thick anodic coating).
 - Optional: - color anodize. Select from manufacturers standard color offering.

PART 3 - EXECUTION

3.01 Installation

- A. Protect all expansion joint component parts from damage during installation and placement of wall or ceiling materials and thereafter until completion of structure.

- B. Expansion joint systems shall be installed in strict accordance with the manufacturer's typical details and instructions along with the advice of their qualified representative.

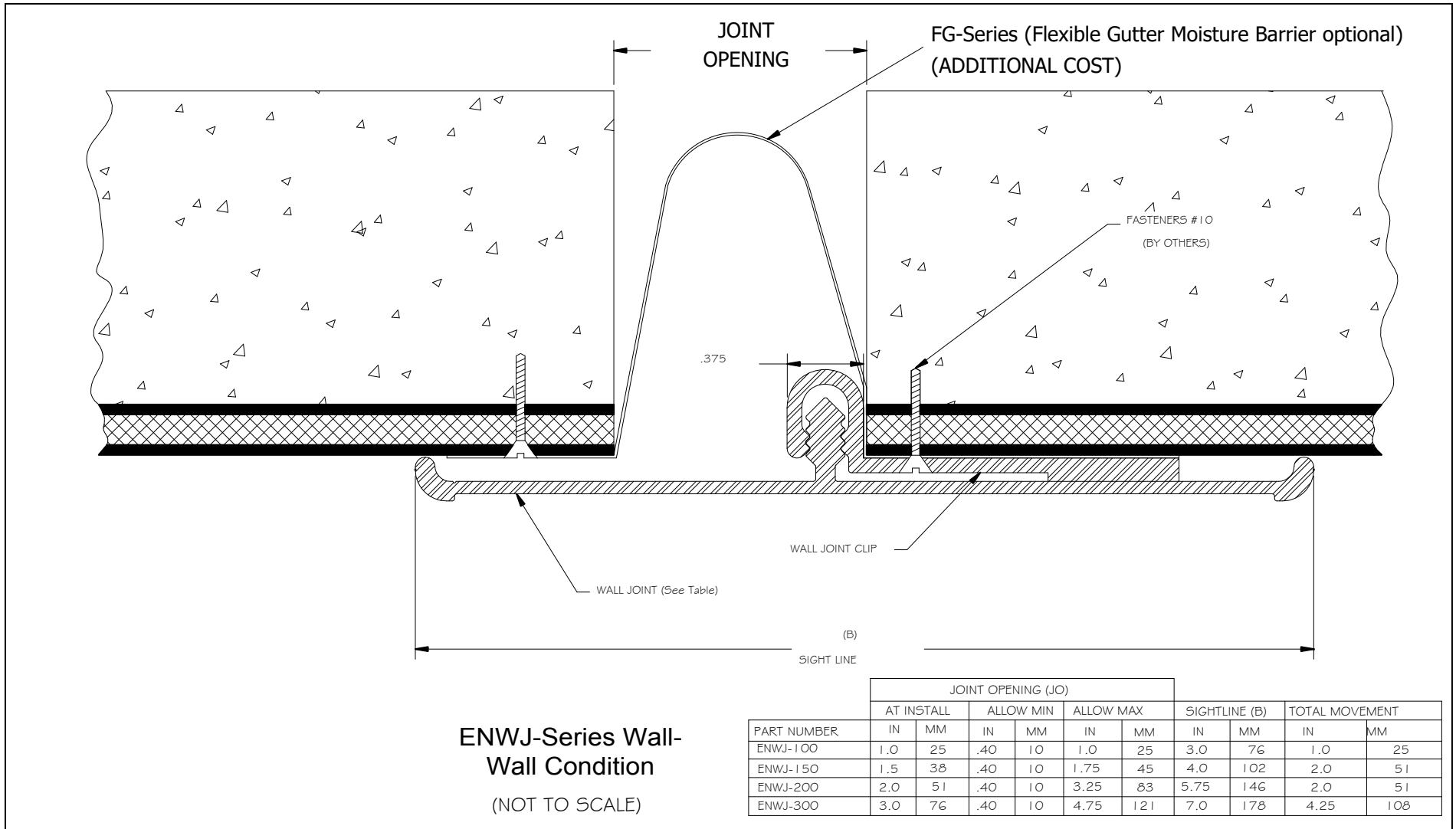


Erie Metal Specialties, Inc.
13311 Main Road
Akron, NY 14001
Phone: 716-542-3991
Fax: 716-542-3996
E-mail: sales@eriemetal.com
Website: www.eriemetal.com

- C. Expansion joint systems shall be set to the proper width for the ambient temperature at the time of installation. This information is indicated in the contract plans.

3.02 Clean and Inspect

- A. Upon completing installation, the contractor shall clean all exposed metal surfaces with a suitable cleaner that will not harm or attack the finish. Contact manufacturer should questions arise regarding suitability of any cleaner type prior to its use.



NO.	Description	Date	By		
<p>The information contained herein is the proprietary property of ERIE METAL SPECIALTIES, INC. No portion of it may be reproduced by any means or used in any form except for the purpose for which it was intended. All rights of design and invention are hereby reserved.</p>					



13311 Main Road • Akron • New York • 14001
 Phone: (716) 542-3991 • Fax: (716) 542-3996 • E-mail: sales@eriemetal.com

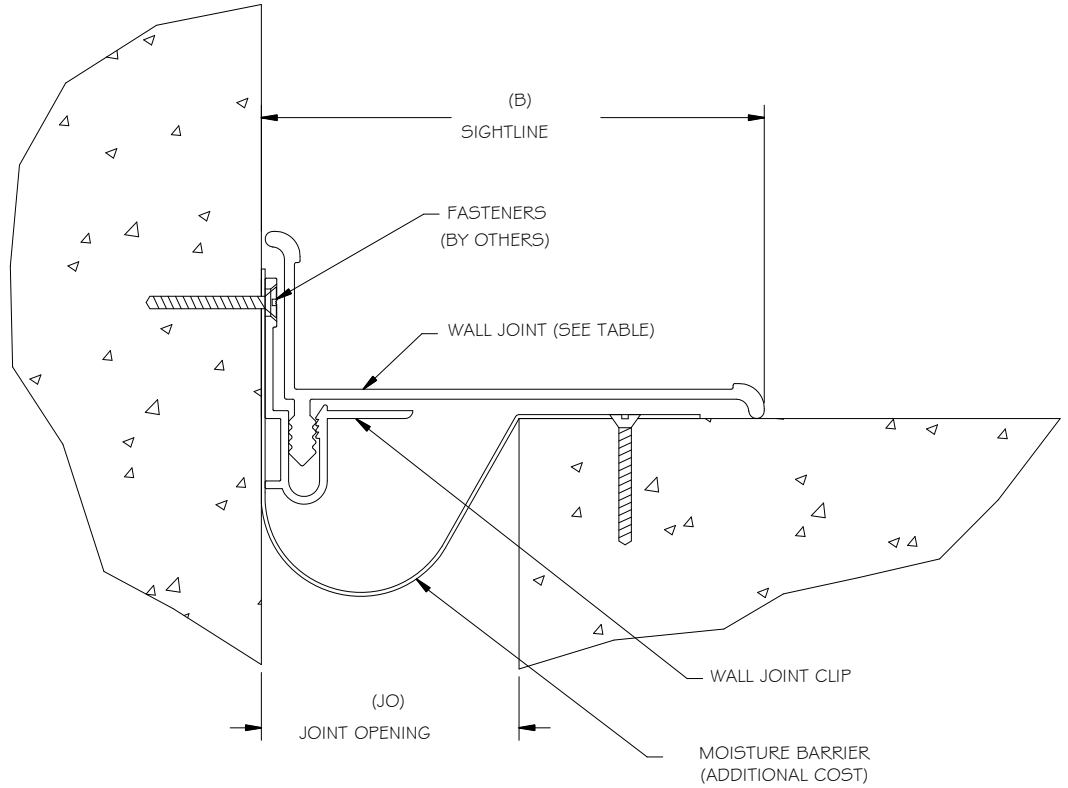
PROJECT:

TITLE:

Detailed by: BAF	Date: 10/21/17
Checked By: SLP	Date: 10/21/17
Scale: NTS	EMS Job #:
Sheet No.: 1 of 1	Drawing No.: ENWJ-Series



PLAN VIEW
(NOT TO SCALE)



SPECIFICATIONS:

- 6063-T6 ALUMINUM
- CLEAR ANODIZED FINISH
- WALL JOINT CLIPS MANUFACTURED WITH PREDRILLED HOLES
- STANDARD LENGTH = 10' SECTION
- MOISTURE BARRIER OPTIONAL

PART NUMBER	JOINT OPENING (JO)									
	AT INSTALL		ALLOW MIN		ALLOW MAX		SIGHTLINE (B)		TOTAL MOVEMENT	
	IN	MM	IN	MM	IN	MM	IN	MM	IN	MM
ENWJ-100W	1.0	25	.50	13	1.75	45	2.50	64	1.0	25
ENWJ-200W	2.0	51	.50	13	3.25	83	4.00	102	2.0	51
ENWJ-300W	3.0	76	.50	13	4.75	121	5.50	140	3.0	76

NO.	Description	Date	By

The information contained herein is the proprietary property of ERIE METAL SPECIALTIES, INC. No portion of it may be reproduced by any means or used in any form except for the purpose for which it was intended. All rights of design and invention are hereby reserved.



13311 Main Road • Akron • New York • 14001
 Phone: (716) 542-3991 • Fax: (716) 542-3996 • E-mail: sales@eriemetal.com

PROJECT:

TITLE:

Detailed by: BAF	Date: 10/21/17
Checked By: SLP	Date: 10/21/17
Scale: NTS	EMS Job #:
Sheet No.: 1 of 1	Drawing No.: