

ELCW/F/M Series Corridor System

Interior Joints (Wall)

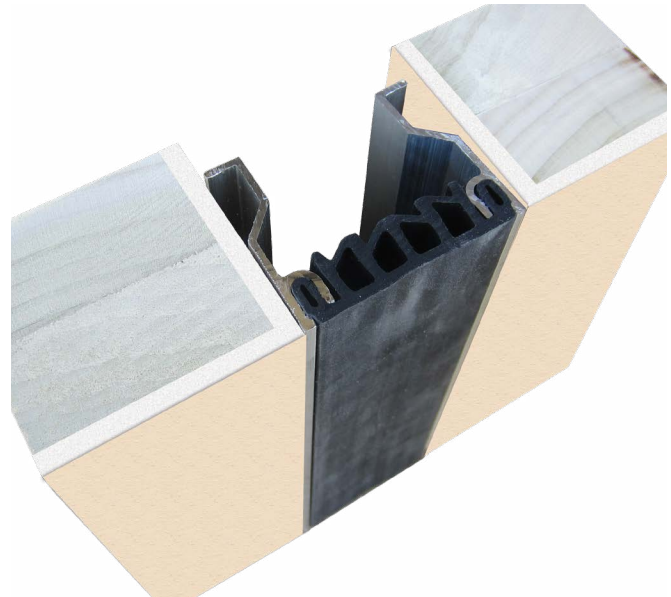
The Elastomeric Corridor System limits the sight line of the expansion joint by mounting inside the joint opening. Available in a variety of attachment solutions for various applications with standard santoprene color selection to match your surrounding substrate and finish material.

FEATURES

COMPLEMENTARY SEAL COLORS Available in four elastomeric seal color options: beige, white, gray or black.

QUICKER INSTALLATION Reduce installation time and labor costs with fast and easy installation.

CONTINUOUS SIGHT LINE This system can be used on walls, ceilings and corners to provide seamless and continuous aesthetics.



DETAILS

MATERIAL 6063-T6 Aluminum with Rubber Seal

FINISH Mill

MOVEMENT

- Thermal: Horizontal

MOUNTING Flush

JOINT SIZE 1 inch to 2 inches

SEAL LENGTH Continuous

APPLICATION Interior

INSTALLATION Wall or Ceiling

OPTIONS Seal Color, Moisture Barrier, Fire Barrier

SEAL COLORS



Beige

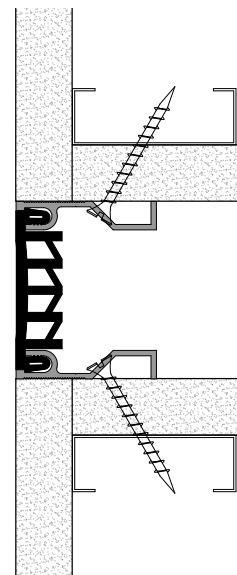
White

Gray

Black

MODELS

MODEL	INSTALLATION	JOINT SIZE AT MEAN T°F	SYSTEM WIDTH	TOTAL MOVEMENT
ELCWF-100	Wall-to-Wall or Wall/Ceiling Corner	1/2" to 2"	1/2" to 2"	±1/2" to ±2"
ELCWF-200	Wall-to-Wall or Wall/Ceiling Corner	1/2" to 2"	1/2" to 2"	±1/2" to ±2"



Wall-to-Wall



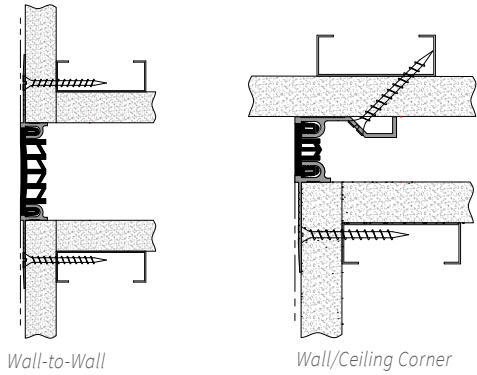
Erie Metal Specialties, Inc.
13311 Main Road
Akron, NY 14001

Phone: 716-542-3991
Website: www.eriemetal.com
E-Mail: sales@eriemetal.com

ELCW/F/M Series Corridor System (Cont.)

Interior Joints (Wall)

ELCW Series Drywall Bead Application



This Drywall Bead Elastomeric Corridor System limits the sight line of the expansion joint by using a drywall bead for mounting. The finished tape and mud process provides a flush finish installation with an option of four Santoprene seal color options to match your surroundings.

DETAILS

MOUNTING Flush with Drywall Bead

MODELS

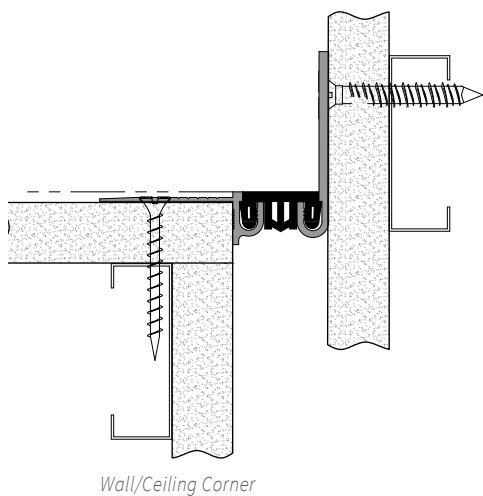
WALL-TO-WALL

MODEL	JOINT SIZE AT MEAN T°F	SYSTEM WIDTH	TOTAL MOVEMENT
ELCW-100	1" (25mm)	1" (25mm)	.5" (13mm)
ELCW-200	2" (51mm)	2" (51mm)	1" (25mm)

WALL/CEILING CORNER

MODEL	JOINT SIZE AT MEAN T°F	SYSTEM WIDTH	TOTAL MOVEMENT
ELCW-100W	1" (25mm)	1" (25mm)	.5" (13mm)
ELCW-200W	2" (51mm)	2" (51mm)	1" (25mm)

ELCWM Series Corner Drywall Bead Application



Designed for drywall corner applications, this Elastomeric Corridor Corner System limits the sight line of the expansion joint by using a drywall bead. The system is mounted to the outside of the joint opening with a finished tape and mud process, while maintaining the elegance of exposed aluminum corner plate. The Santoprene seal comes in four colors to match your surroundings.

DETAILS

MOUNTING Flush with Drywall Bead

MODELS

WALL/CEILING CORNER

MODEL	JOINT SIZE AT MEAN T°F	SYSTEM WIDTH	TOTAL MOVEMENT
ELCWM-100	1" (25mm)	1" (25mm)	.5" (13mm)
ELCWM-200	2" (51mm)	2" (51mm)	1" (25mm)



Erie Metal Specialties, Inc.
13311 Main Road
Akron, NY 14001

Phone: 716-542-3991
Website: www.eriametal.com
E-Mail: sales@eriametal.com