

ERA Series Flooring System

Interior Joints (Floor)

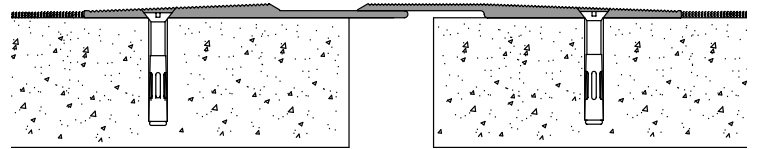
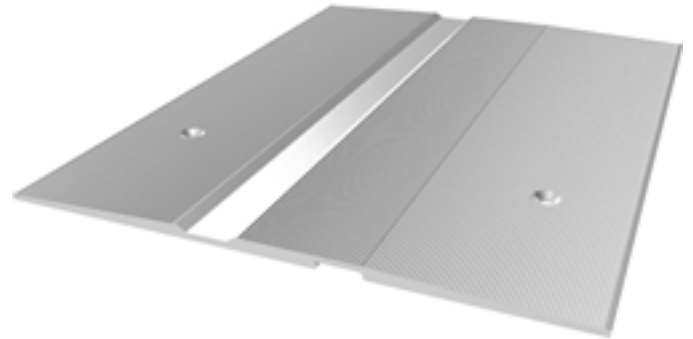
The Architectural Aluminum Flooring System, with dual mounting, allows for flush mounting next to tile or carpeting. The overlap covers joint opening when movement occurs. The exposed cover plate is manufactured with continuous serrations providing an anti-slip surface to reduce trips, slips and falls.

FEATURES

ANTI-SLIP SURFACE Designed with serrations to create an anti-slip surface.

SURFACE MOUNT No block out is required - simply screw onto the existing subfloor.

ARCHITECTURAL METAL The entire system of metal is exposed for architectural aesthetics. The neighboring flooring infill simply butts against the system.



ERA125

DETAILS

MATERIAL 6063-T6 Aluminum

FINISH Mill

MOVEMENT

- Thermal: Vertical

MOUNTING Surface

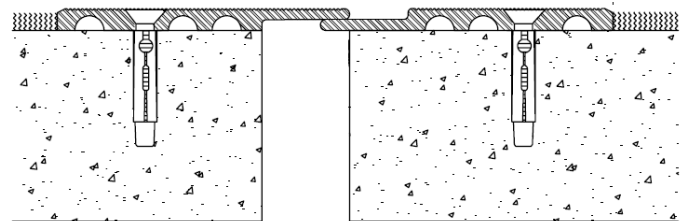
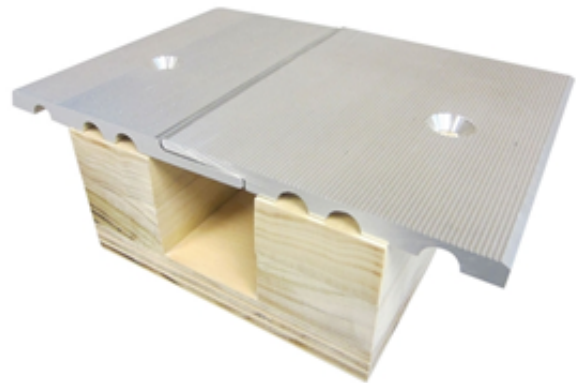
JOINT SIZE 1 inch

LENGTH 10 Linear Feet

LOAD Pedestrian and Light Cart

INSTALLATION Floor

OPTIONS Moisture Barrier, Fire Barrier



ERA375

MODELS

MODEL	JOINT SIZE AT	EXPOSED SIGHT-LINE	FLOOR INFILL HEIGHT	MOVEMENT
ERA125	1" (25mm)	9.25" (235mm)	0.125" (3mm)	.75" (20mm)
ERA375	1" (25mm)	8.5" (212mm)	0.375" (10mm)	.75" (20mm)



Erie Metal Specialties, Inc.
13311 Main Road
Akron, NY 14001

Phone: 716-542-3991
Website: www.eriametal.com
E-Mail: sales@eriametal.com