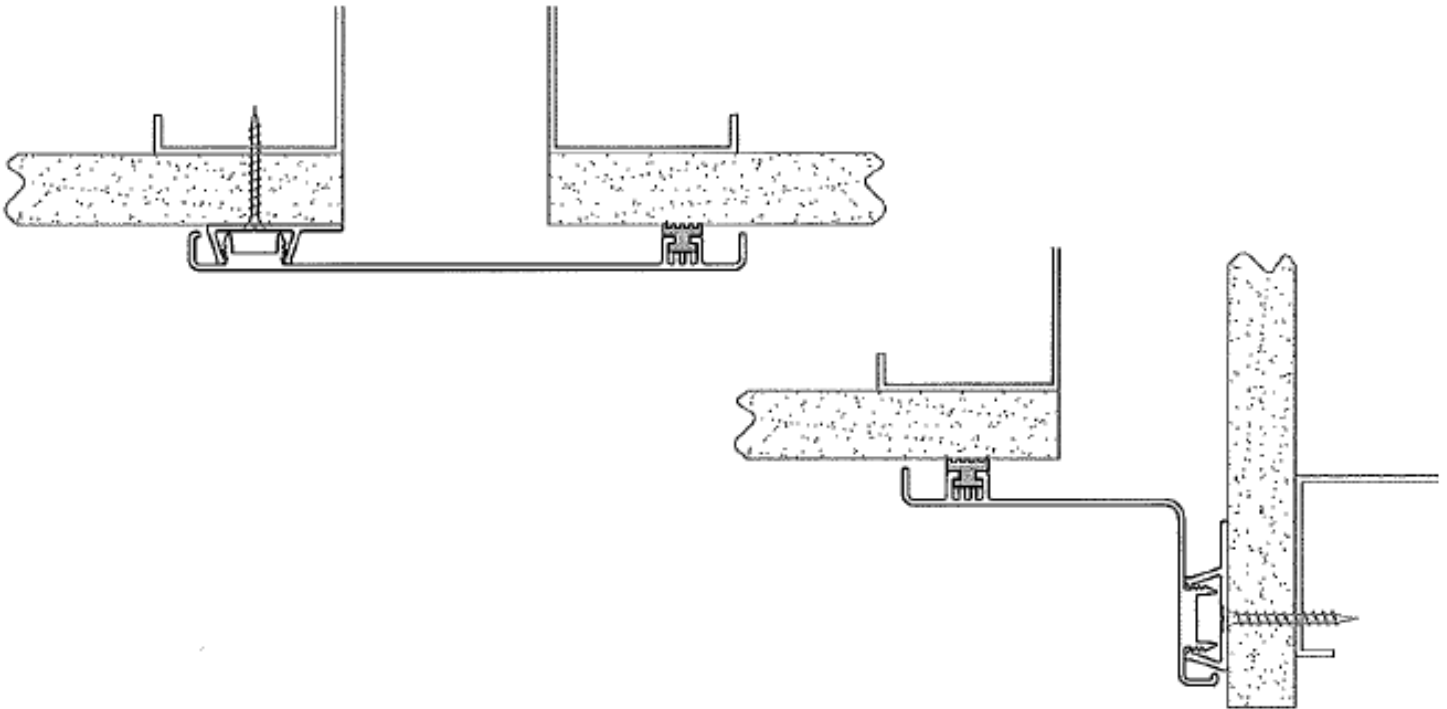




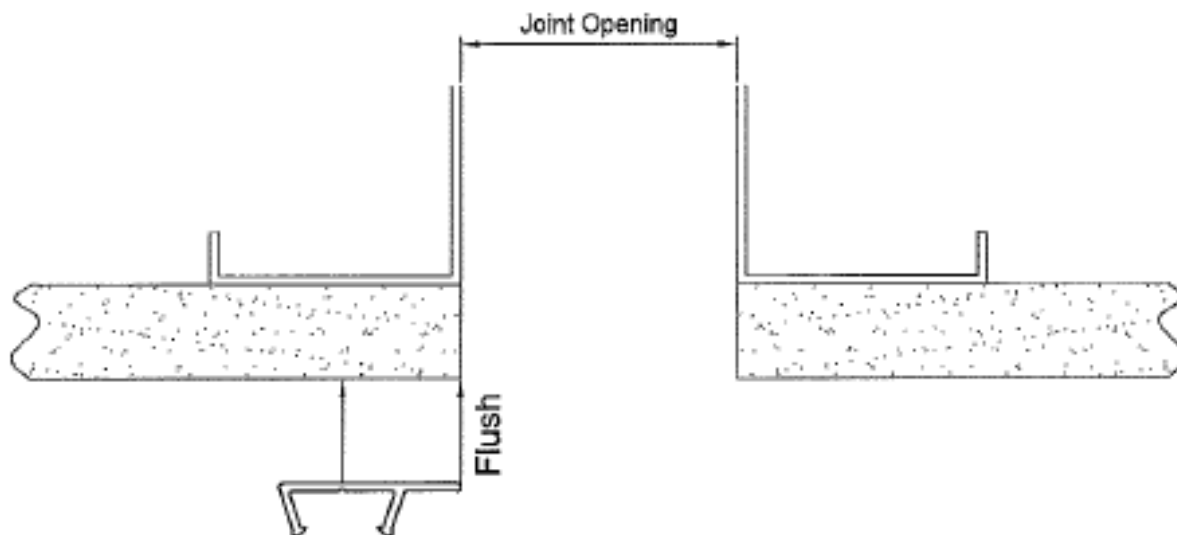
Erie Metal Specialties, Inc.
13311 Main Road
Akron, NY 14001

Phone: 716-542-3991
Website: www.eriemetal.com
E-Mail: sales@eriemetal.com

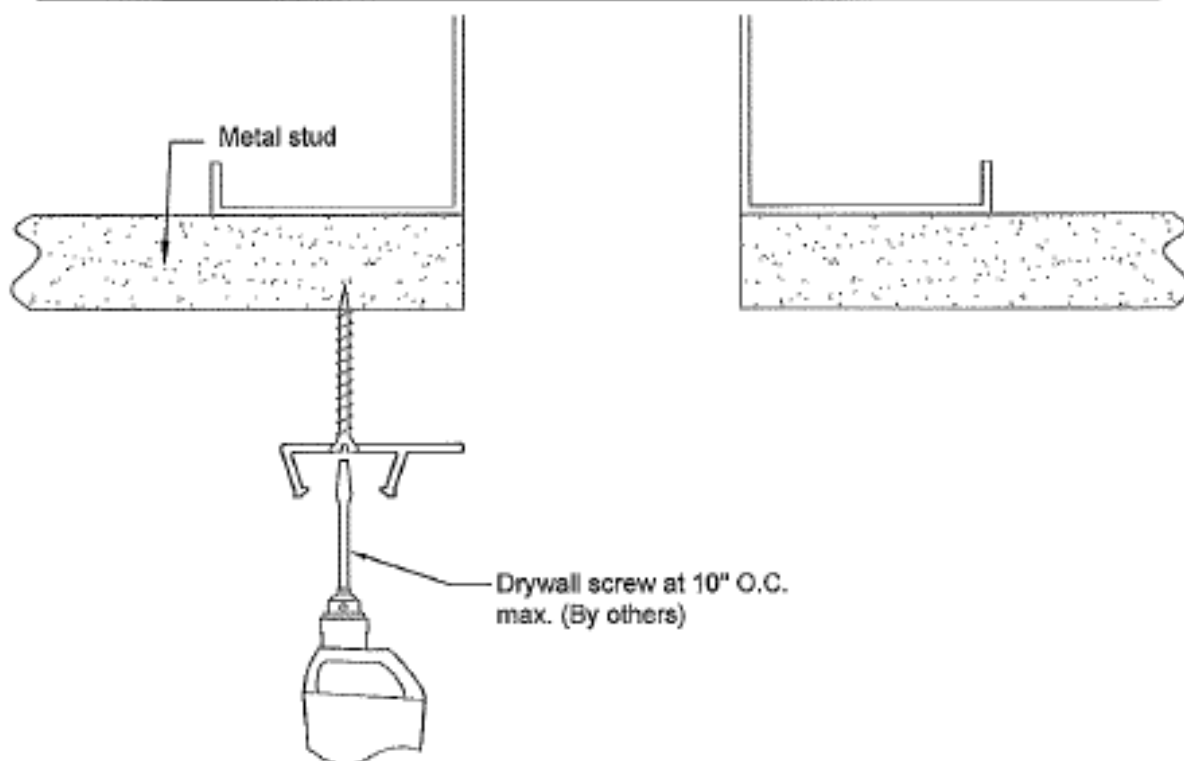
EBWF Series Installation Instructions



The following installation procedure is very important and must be fully understood prior to beginning any work. To ensure proper installation and performance of expansion joint system the following actions must be completed by the installing contractor. Failure to do so will affect product warranty.



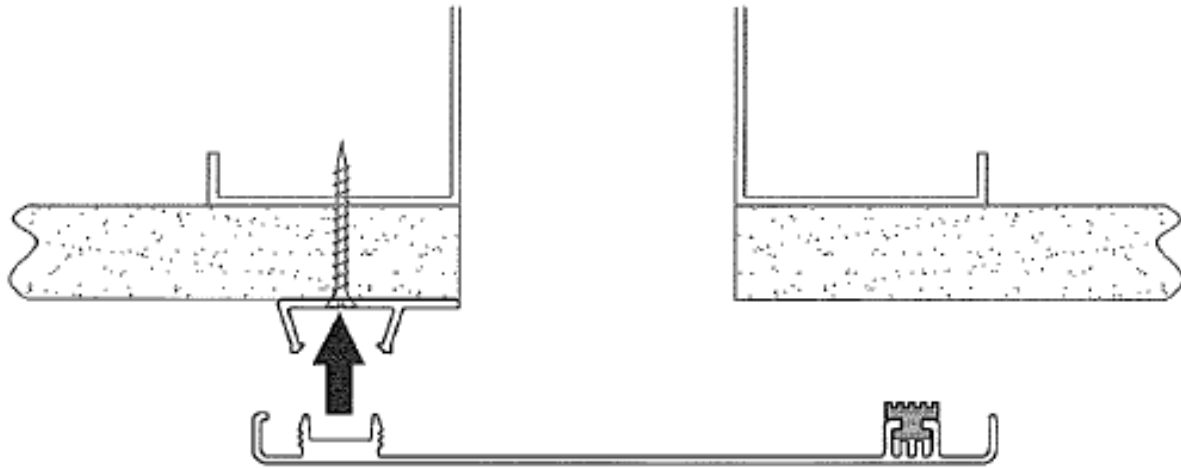
- 1** Position base extrusion onto wall flush with edge of joint opening.



- 2** Align and drive drywall screw through base extrusion into wall construction at the specified anchor spacing.

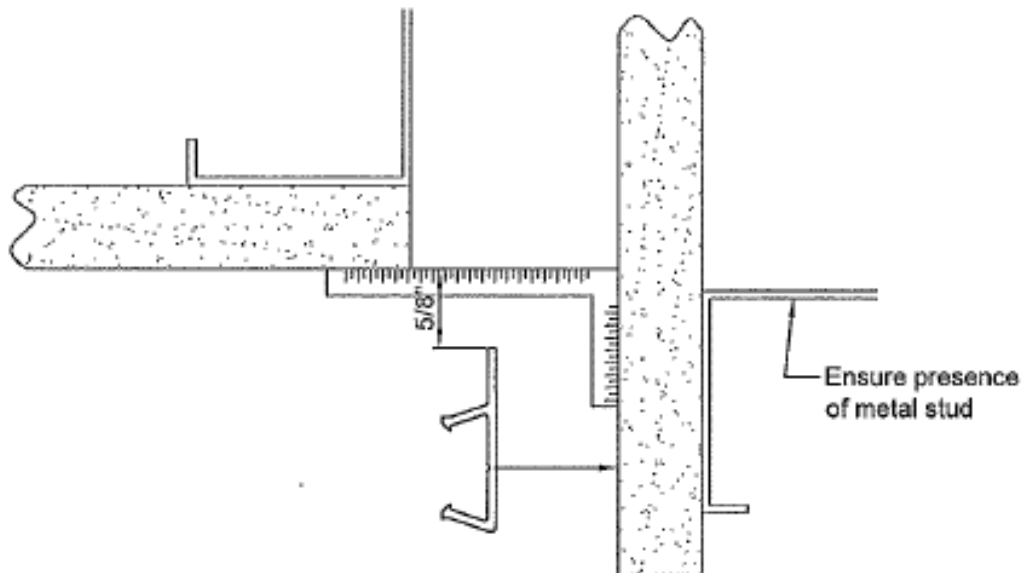


- 3** Slide PVC Gasket into cover.

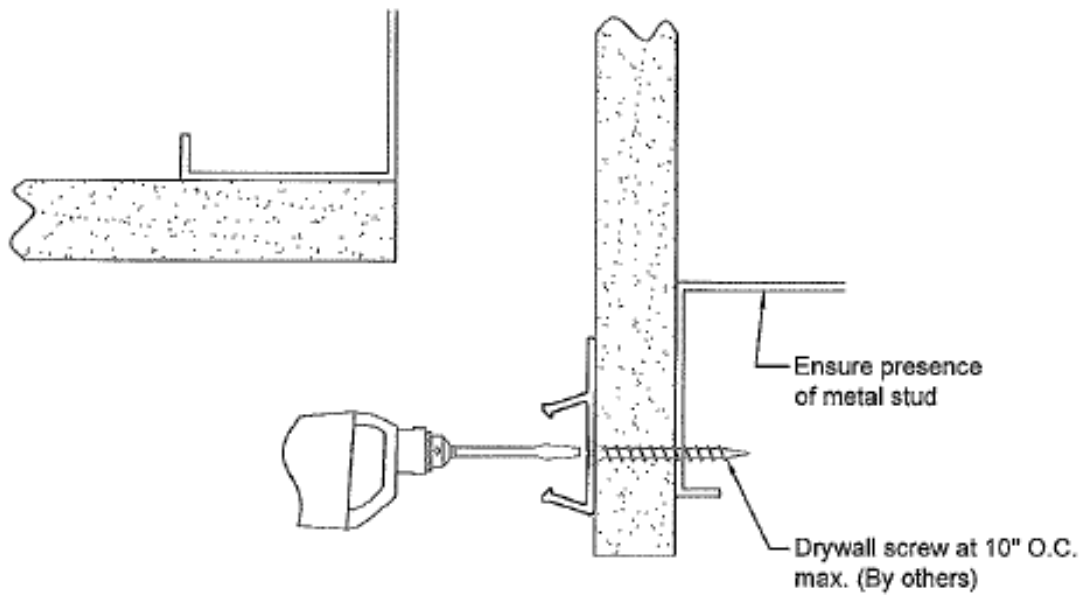


- 4** Align Cover with base extrusion. Slowly and carefully snap aluminum cover into base extrusion.
-

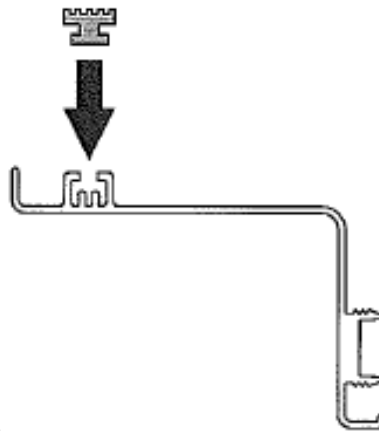
Corner Condition



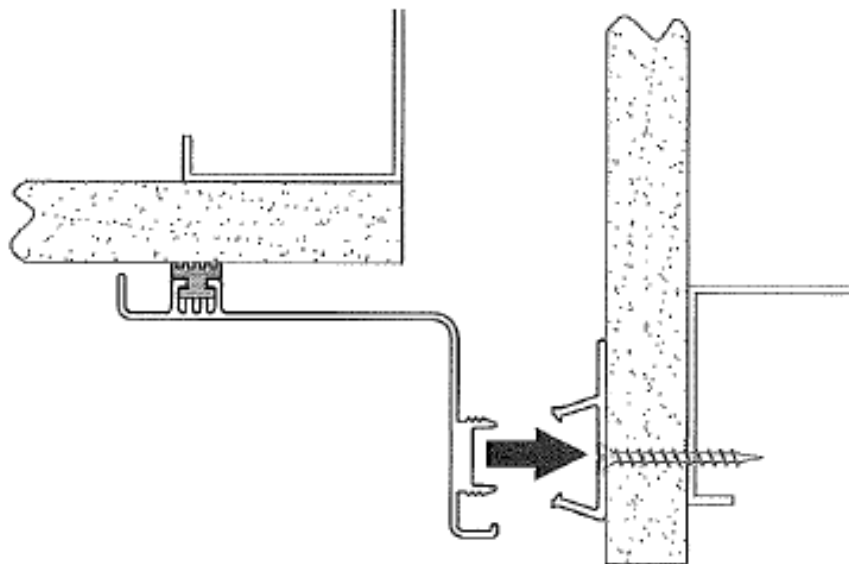
- 1** Position base extrusion onto wall as shown. Ensure top of the base extrusion is 5/8" away from other wall.
-



- 2** Drill hole through metal wall stud for dry wall using screw gun. Align and drive drywall screw through base extrusion into wall construction at the specified anchor spacing.



- 3** Slide PVC Gasket into cover.



- 4** Align cover with base extrusion. Slowly and carefully snap aluminum cover into base member.