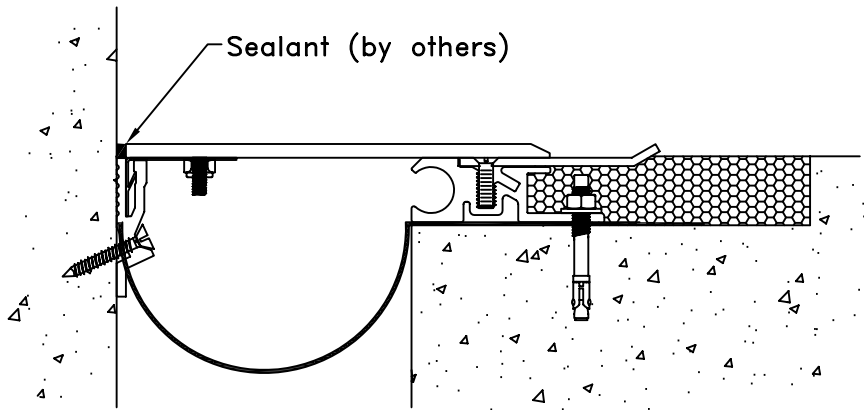
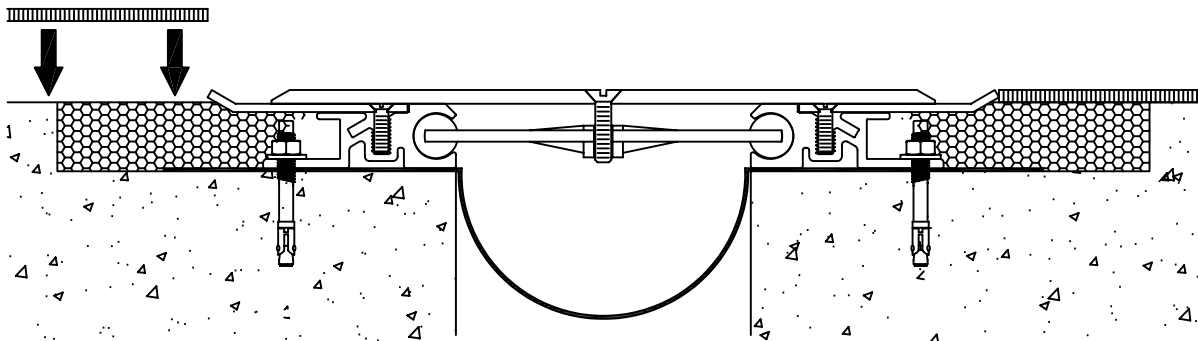


- 7 Position the coverplate over the expansion opening, align the pre-drilled holes in the slide plate with threaded insert in self-centering bars. Fasten with 1/4" x 1 1/4" flat head machine screws. Tighten to create measurable tension in the bar.



- 8 Position the coverplate with spring steel extension over the wall mounted aluminum bracket and slide down into extrusion. After the cover plate has been installed, contractor shall apply a continuous bead of sealant (by others) along edge of coverplate assembly and face of wall.



- 9 Install flooring material ensuring that it is flush with the top of the expansion joint system. Caution – contact flooring manufacturer to discuss application and procedure for proper installation.