

() - Denotes Millimeters

* Architect To Verify Flexibility Of Tile With Flooring Manufacturer

DIMENSION CHART						
MODEL	SYSTEM HEIGHT	A			B	TOTAL MOVEMENT
		AT INSTALL	ALLOW MIN	ALLOW MAX		
EFLC-100	2"(51)	1"(25)	5/8"(16)	1 5/8"(41)	7"(178)	1"(25)
EFLC-200	2"(51)	2"(51)	1"(25)	3"(76)	6"(152)	2"(51)
EFLC-400	2"(51)	4"(102)	2"(51)	6"(152)	4"(102)	4"(102)

NO.	Description	Date	By
<p>The information contained herein is the proprietary property of ERIE METAL SPECIALTIES, INC. No portion of it may be reproduced by any means or used in any form except for the purpose for which it was intended. All rights of design and invention are hereby reserved.</p>			

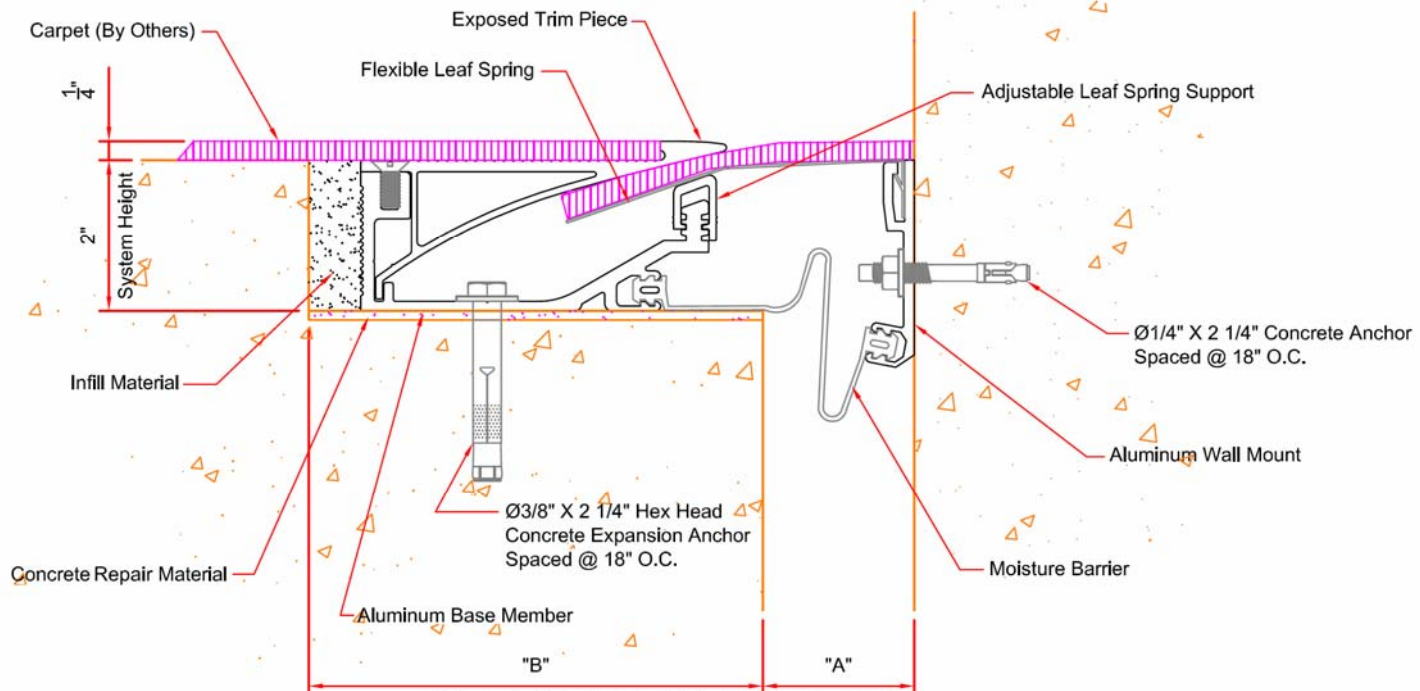


13311 Main Road • Akron • New York • 14001
 Phone: (716) 542-3991 • Fax: (716) 542-3996 • E-mail: sales@eriemetal.com

PROJECT:

TITLE:

Detailed by: BAF	Date: 10/21/17
Checked By: SLP	Date: 10/21/17
Scale: NTS	EMS Job #:
Sheet No.: 1 of 1	Drawing No.:



() - Denotes Millimeters

DIMENSION CHART

MODEL	SYSTEM HEIGHT	A			B	TOTAL MOVEMENT
		AT INSTALL	ALLOW MIN	ALLOW MAX		
EFLC-100W	2"(51)	1"(25)	5/8"(16)	1 5/8"(41)	7"(178)	1"(25)
EFLC-200W	2"(51)	2"(51)	1"(25)	3"(76)	6"(152)	2"(51)
EFLC-400W	2"(51)	4"(102)	2"(51)	6"(152)	4"(102)	4"(102)

NO.			

The information contained herein is the proprietary property of ERIE METAL SPECIALTIES, INC. No portion of it may be reproduced by any means or used in any form except for the purpose for which it was intended. All rights of design and invention are hereby reserved.



13311 Main Road • Akron • New York • 14001
 Phone: (716) 542-3991 • Fax: (716) 542-3996 • E-mail: sales@eriemetal.com

PROJECT:

TITLE:

Detailed by: BAF	Date: 10/21/17
Checked By: SLP	Date: 10/21/17
Scale: NTS	EMS Job #:
Sheet No.:	Drawing No.:
1 of 1	