

# ELCFT Series - Tile Application

## FEATURES

**COMPLEMENTARY SEAL COLORS** Available in four elastomeric colors: beige, white, gray or black.

**COORDINATING CORNERS** Available with corner option for a complete floor solution.

## DETAILS

### MATERIAL

6063-T5 Aluminum, Meets ASTB B221 & Santoprene

**FINISH** Mill

### MOVEMENT

- Thermal: Horizontal

**MOUNTING** Surface

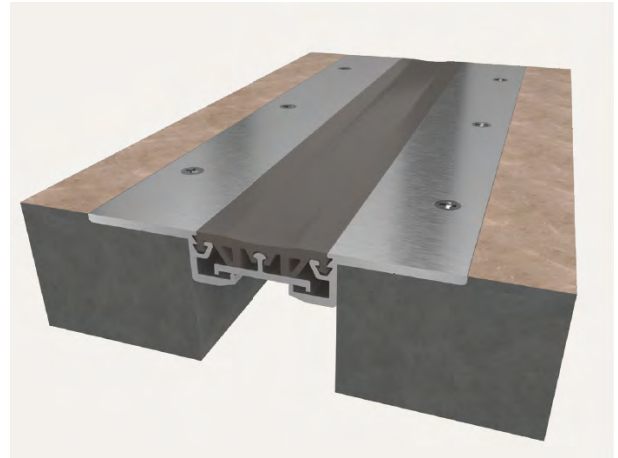
**JOINT SIZE** 1 inch to 3 inches

**LENGTH** 10 Linear Feet

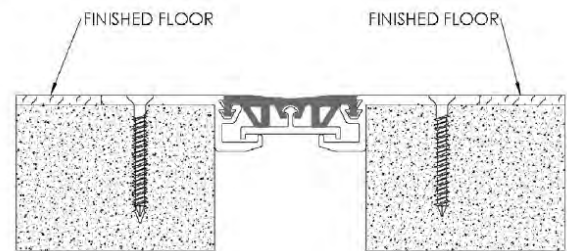
**LOAD** Pedestrian and Light Cart

**INSTALLATION** Floor

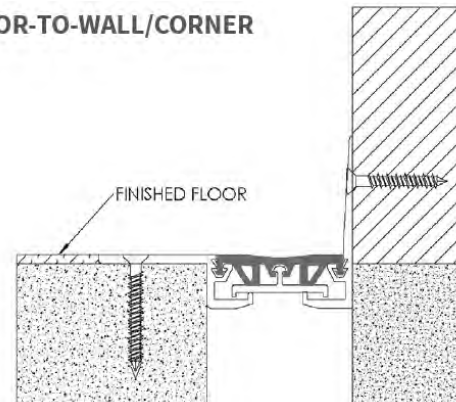
**OPTIONS** Moisture barrier, fire barrier and additional materials, sizes and finishes upon request



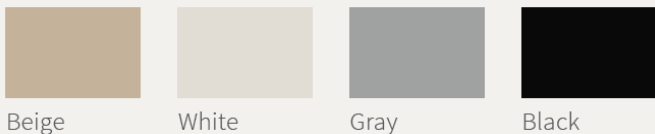
### FLOOR-TO-FLOOR



### FLOOR-TO-WALL/CORNER



## SEAL COLORS



Beige

White

Gray

Black

## MODELS

MODEL	APPLICATION	JOINT SIZE AT MEAN T°F	EXPOSED SIGHT LINE	TOTAL MOVEMENT
ELCFT-100	Floor to Floor	1" (25mm)	4" (102mm)	.5" (13mm)
ELCFT-200	Floor to Floor	2" (51mm)	5" (127mm)	1" (25mm)
ELCFT-300	Floor to Floor	3" (76mm)	6" (152mm)	1.02" (26mm)
ELCFT-100W	Floor to Wall	1" (25mm)	2.5" (64mm)	.5" (13mm)
ELCFT-200W	Floor to Wall	2" (51mm)	3.5" (89mm)	1" (25mm)
ELCFT-300W	Floor to Wall	3" (76mm)	4.5" (114mm)	1.02" (26mm)



Erie Metal Specialties, Inc.  
13311 Main Road  
Akron, NY 14001

Phone: 716-542-3991  
Website: [www.eriemetal.com](http://www.eriemetal.com)  
E-Mail: [sales@eriemetal.com](mailto:sales@eriemetal.com)