

ELCWS Series - Surface Mount System

Interior Joints (Wall)

FEATURES

COMPLEMENTARY SEAL COLORS Available in four elastomeric colors: beige, white, gray or black.

QUICKER INSTALLATION Reduce installation time and labor costs with fast and easy installation.

DETAILS

MATERIAL

6063-T5 Aluminum, Meets ASTB B221 & Santoprene

FINISH Clear Anodized

MOVEMENT

- Thermal: Horizontal

MOUNTING Surface

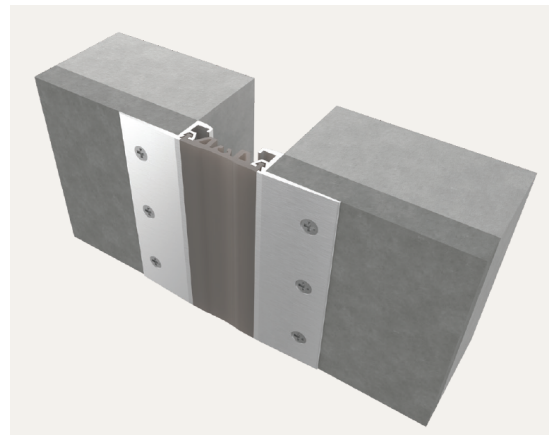
JOINT SIZE 1 inch to 3 inches

LENGTH 10 Linear Feet

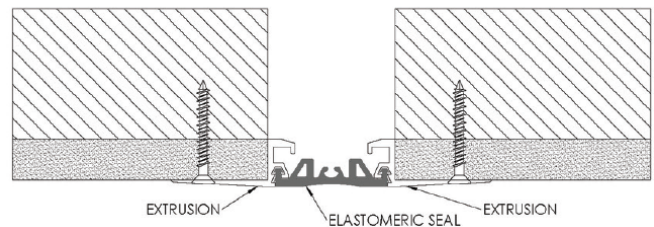
APPLICATION Interior

INSTALLATION Wall or Ceiling

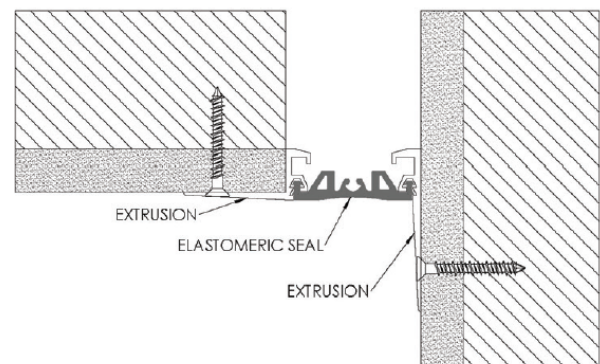
OPTIONS Moisture Barrier, Fire Barrier & additional materials, sizes and finishes upon request



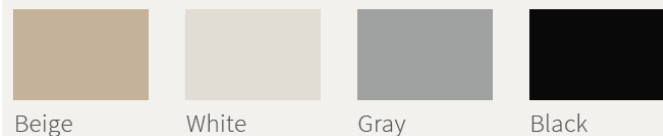
WALL-TO-WALL



WALL-TO-WALL/CORNER



SEAL COLORS



Beige

White

Gray

Black

MODELS

MODEL	APPLICATION	JOINT SIZE AT MEAN T°F	EXPOSED SIGHT LINE	TOTAL MOVEMENT
ELCWS-100	Wall/Ceiling to Wall/Ceiling	1" (25mm)	4" (102mm)	.5" (13mm)
ELCWS-200	Wall/Ceiling to Wall/Ceiling	2" (51mm)	5" (127mm)	1" (25mm)
ELCWS-300	Wall/Ceiling to Wall/Ceiling	3" (76mm)	6" (152mm)	1.5" (38mm)
ELCWS-100W	Wall/Ceiling to Corner	1" (25mm)	2.5" (64mm)	.5" (13mm)
ELCWS-200W	Wall/Ceiling to Corner	2" (51mm)	3.5" (89mm)	1" (25mm)
ELCWS-300W	Wall/Ceiling to Corner	3" (76mm)	4.5" (114mm)	1.5" (38mm)



Erie Metal Specialties, Inc.
13311 Main Road
Akron, NY 14001

Phone: 716-542-3991
Website: www.eriemetal.com
E-Mail: sales@eriemetal.com