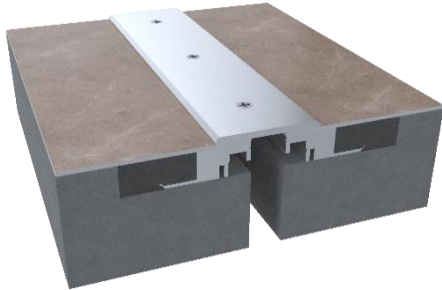


ESFC-Series Installation Instructions

ARCHITECTURAL SEISMIC SYSTEM – TOP PLATE

MODEL(S): ESFC/ESFCw

ESFC Floor to Floor Cover System



GENERAL DESCRIPTION

The ESFC Top Plate Architectural Seismic System is designed to accommodate seismic movement with lateral shear while maintaining the simple look above the flooring. Blockout is required for this installation.

GENERAL SAFETY PRECAUTIONS Improper selection, installation, or use can cause personal injury or property damage. It is solely the responsibility of the user, through its own analysis to select products suitable for their specific application requirements, ensure proper maintenance and use as intended. Follow local, state, and federal regulations for proper installation and operation requirements.

Introduction + Safety

Please read the complete instructions carefully before beginning any work. To ensure proper installation and performance of the product, the following actions must be completed by the installing contractor. Failure to do so will affect product warranty.

Transportation + Storage

- Inspect all shipments and materials for missing or damaged components and hardware.
- Material must be stored in a clean, dry location.

Preparation

- Locate the packing slip(s) and/or shop drawings.
- Verify that all products listed on the packing slip are included in the package.
- Check the products for damage. If products are damaged, report a freight claim immediately and leave the products in their packaging. If you sign for products without reporting damage you waive your right to a freight claim and will be responsible for replacement costs.
- Read the instructions thoroughly before beginning installation.



Tool List

- Tape measure
- Chop saw to cut product to length
- Electric drill with 5/32” masonry bit
- Broom & dustpan or vacuum

Included with the expansion joint system:

- 3/16” x 1-3/4” Tapcon fastener
- #10-24 screws

Pre-Installation

1. Pour floors with blockouts as shown on **Figure 1**. Blockout should be a minimum of 2” wider than the exposed cover width by the specified depth.
2. Ensure that the blockout is smooth. High spots should be ground down and low spots filled in. Make sure the blockout is clean by sweeping and/or vacuuming.

INSTALLATION

1. Position base member frames in blockout per shop drawings. Using the frame as a template, mark and drill 5/32” holes for Tapcon fasteners. Install base member frames to the blockout opening with fasteners, making sure not to over tighten. **See Figure 1**

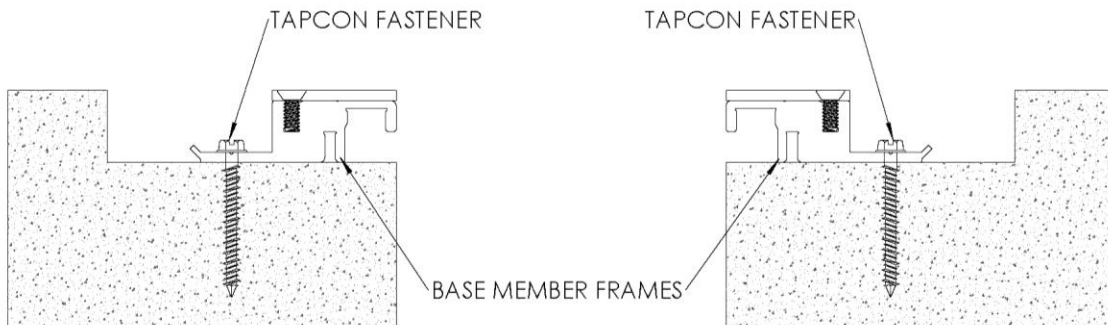


FIGURE 1

2. Protect the exposed surface of the expansion joint, then install grout in the breakout (by others) level with the surrounding floor. **See Figure 2**

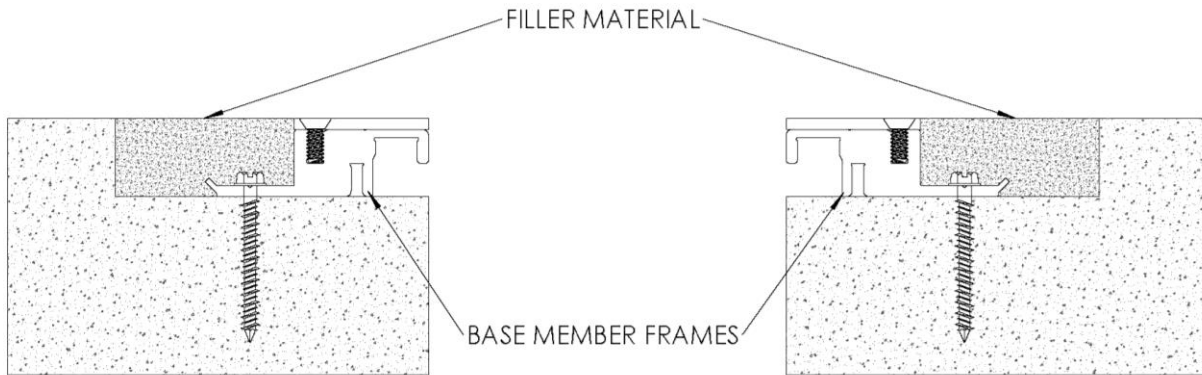


FIGURE 2

3. Finish floor can be installed after grout has cured. **See Figure 3**

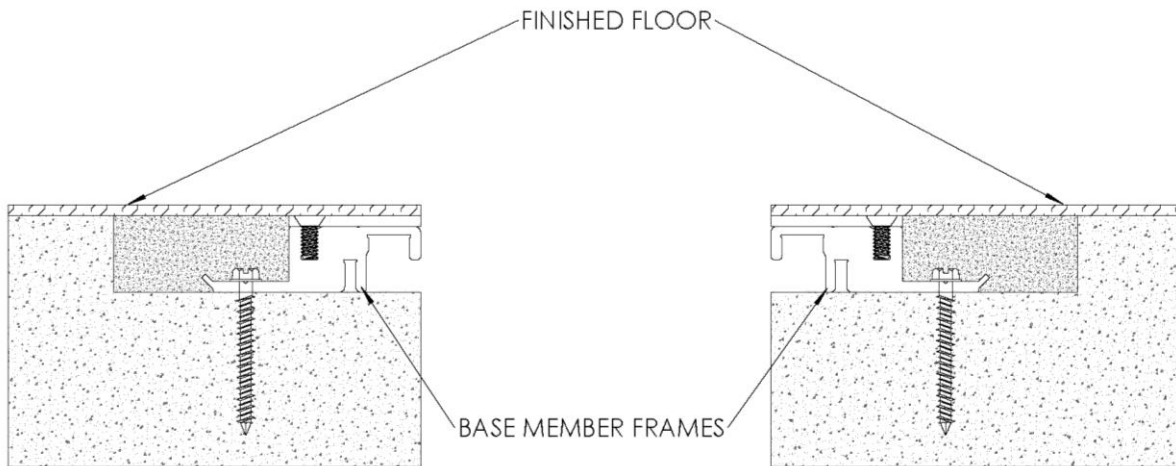


FIGURE 3

4. Lay cover plate over the left side of the finished floor with ends flush and mark the cover plate center holes onto the finished floor near the inside edge. Repeat this on the right side. Position the spring assembly in the spring track on the base frames. This is done by sliding the spring assemblies in from the ends of the frames and aligning them with the marked locations. The spring assemblies will be diagonal to the opening. Tape may be needed to hold the spring assembly in place. **See Figure 4**

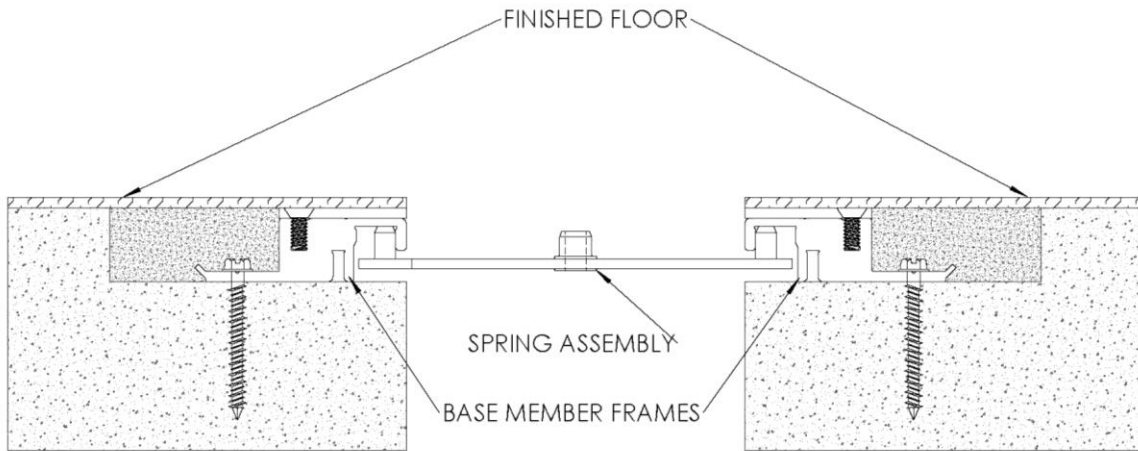


FIGURE 4

5. Position the cover plate centered over the base frame and with the center hole aligned with the spring assemblies. Attach the cover plate to the spring assemblies with the provided spring screws - **DO NOT OVERTIGHTEN**. **See Figure 5**

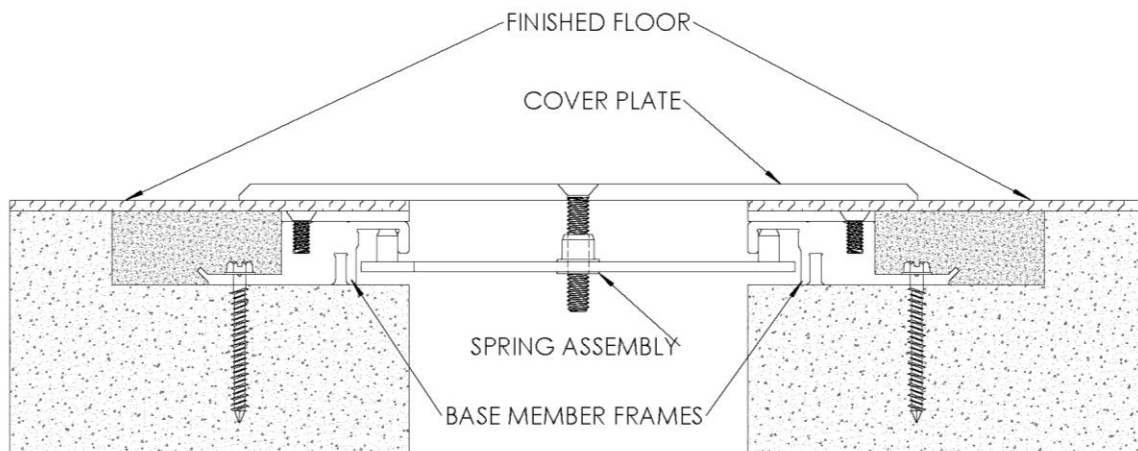


FIGURE 5

ESFCw Floor to Wall Cover System



GENERAL DESCRIPTION

The ESFCw Interior Cover System is designed to match the ESFC cover plate in floor to wall applications.

Tool List

- Tape measure
- Chop saw to cut product to length
- Electric drill with 5/32" standard/masonry bit
- Broom & dustpan or vacuum

Included with the expansion joint system:

- 3/16" X 1-3/4" Tapcon fastener

Pre-Installation

1. Pour floors with blockouts as shown on shop drawings. Blockout should be a minimum of 1" wider than the exposed cover width by the specified depth
2. Ensure that the blockout is smooth. High spots should be ground down and low spots filled in. Make sure the blockout is clean by sweeping and/or vacuuming.

INSTALLATION

1. Position base member frame in blockout per shop drawings. Using the frame as a template, mark and drill $5/32$ " holes for Tapcon fasteners. Install base member frame to the blockout opening with fasteners, making sure not to over tighten. **See Figure 1**

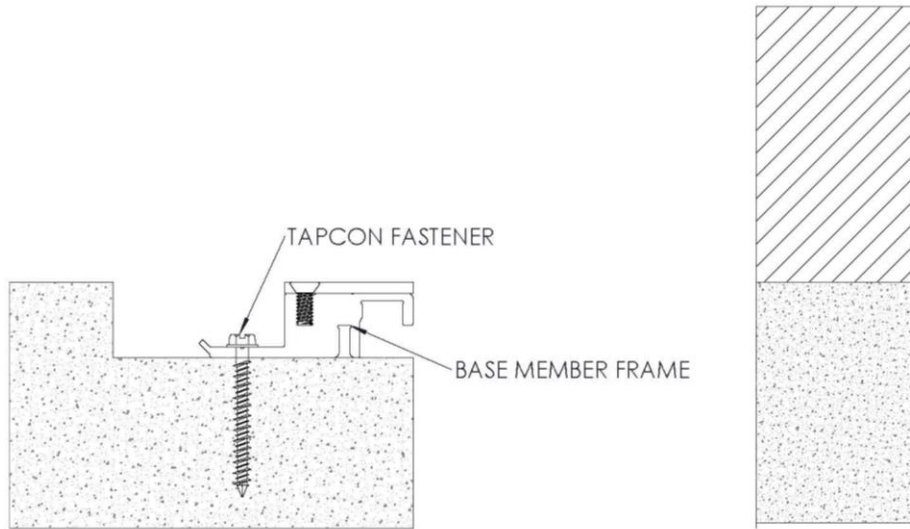


FIGURE 1

2. Protect the exposed surface of the expansion joint and then grout in the blockout level with the surrounding floor. **See Figure 2**

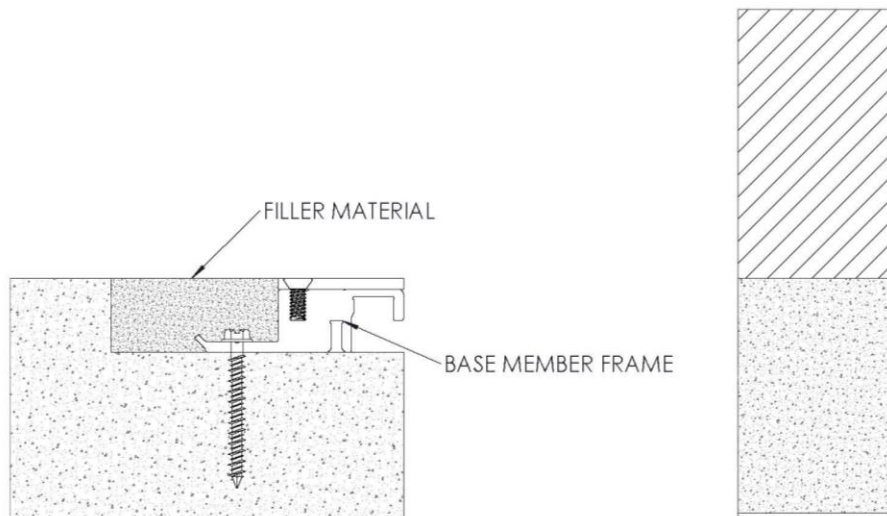


FIGURE 2

3. Finish floor can be installed after grout has cured. **See Figure 3**

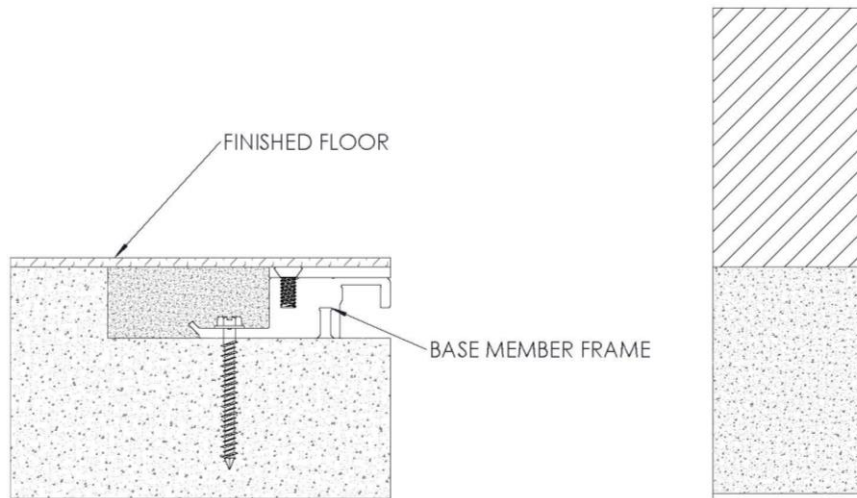


FIGURE 3

4. Position the cover plate against the wall as shown, making sure the top of its horizontal face is level with the finished floor. Attach the plate to the wall using appropriate fasteners (by others) for the wall type, spaced 18" o.c. **See Figure 4**

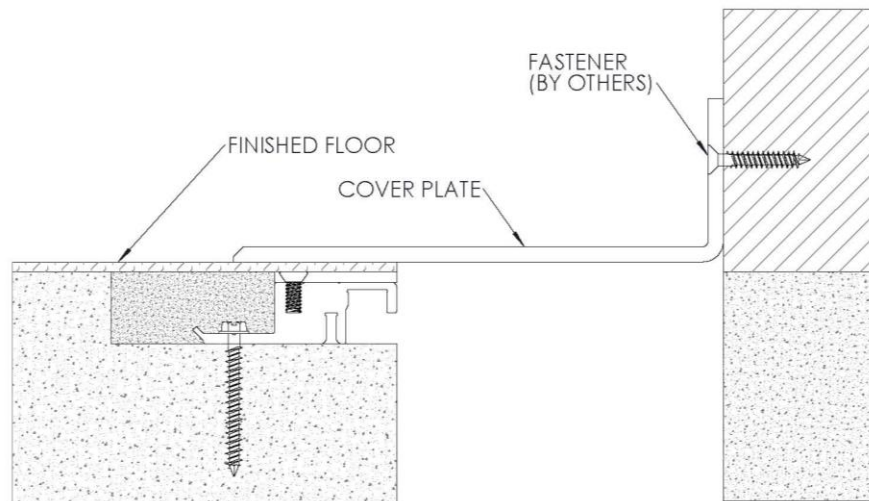


FIGURE 4