

***FLOOR TO FLOOR/WALL - SURFACE MOUNT COVER***

EXPOSED FINISH: MILL

MOVEMENT: +/- 50% JOINT WIDTH (floor-floor)

MOVEMENT: +/- 25% JOINT WIDTH (floor-wall)

STOCK LENGTHS: 10'-0"

PRODUCT	Application	Joint Size "A" @ Mean T°F	Exposed Site line "B" IN(MM)	Top Plate Width "C" IN(MM)	Total Movement IN (MM)
ESFE-200	Floor-Floor	2.00" (51)	6.75" (171)	5.50" (140)	2.00" (51)
ESFE-200W	Floor-Wall	2.00" (51)	4.37" (111)	3.75" (95)	1.00" (25)

NO.	Description	Date	By
<small>The information contained herein is the proprietary property of ERIE METAL SPECIALTIES, INC. No portion of it may be reproduced by any means or used in any form except for the purpose for which it was intended. All rights of design and invention are hereby reserved.</small>			



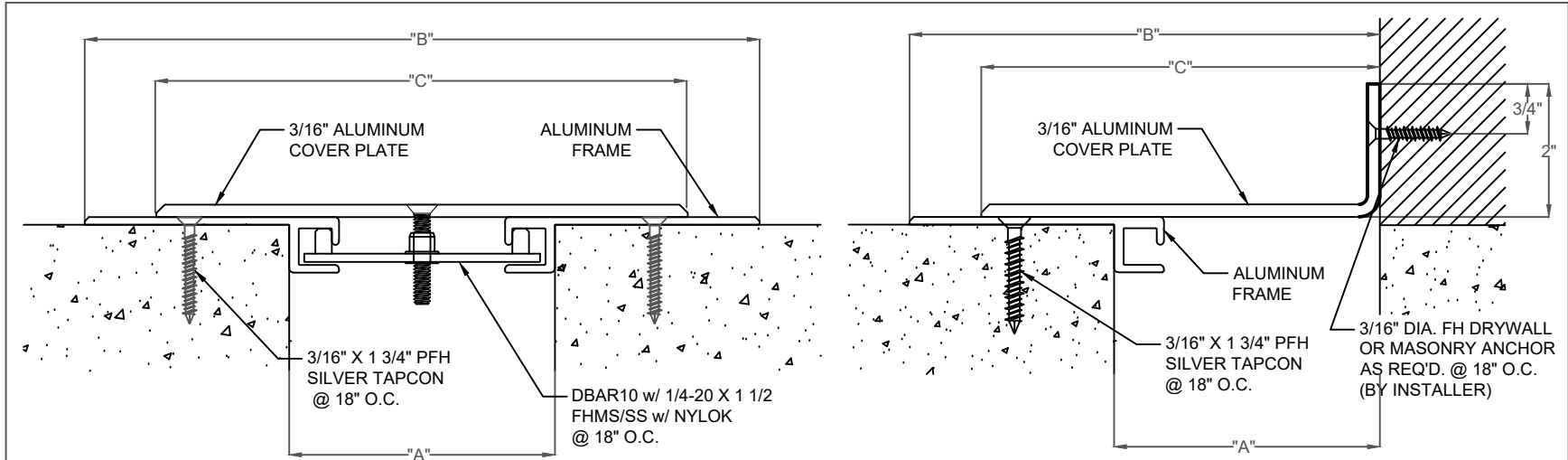
13311 Main Road \* Akron \* New York \* 14001  
 Phone: (716) 542-3991 \* Fax: (716) 542-3996 \* E-mail: sales@eriemetal.com

PROJECT:

---

TITLE: ESFE-200/200W

Detailed by:	Date:
BAF	10/21/17
Checked by:	Date:
SLP	10/21/17
Scale:	EMS Job #:
NTS	
Sheet No.:	Drawing No.:
1 of 1	ESFE-1



***FLOOR TO FLOOR/WALL - SURFACE MOUNT COVER***

EXPOSED FINISH: MILL

MOVEMENT: +/- 50% JOINT WIDTH (floor-floor)

MOVEMENT: +/- 25% JOINT WIDTH (floor-wall)

STOCK LENGTHS: 10'-0"

PRODUCT	Application	Joint Size "A" @ Mean T°F	Exposed Site line "B" IN(MM)	Top Plate Width "C" IN(MM)	Total Movement IN (MM)
ESFE-400	Floor-Floor	4.00" (102)	10.18" (258)	8.00" (203)	4.00" (102)
ESFE-400W	Floor-Wall	4.00" (102)	7.06" (180)	6.00" (152)	2.00" (51)

NO.	Description	Date	By

The information contained herein is the proprietary property of ERIE METAL SPECIALTIES, INC. No portion of it may be reproduced by any means or used in any form except for the purpose for which it was intended. All rights of design and invention are hereby reserved.

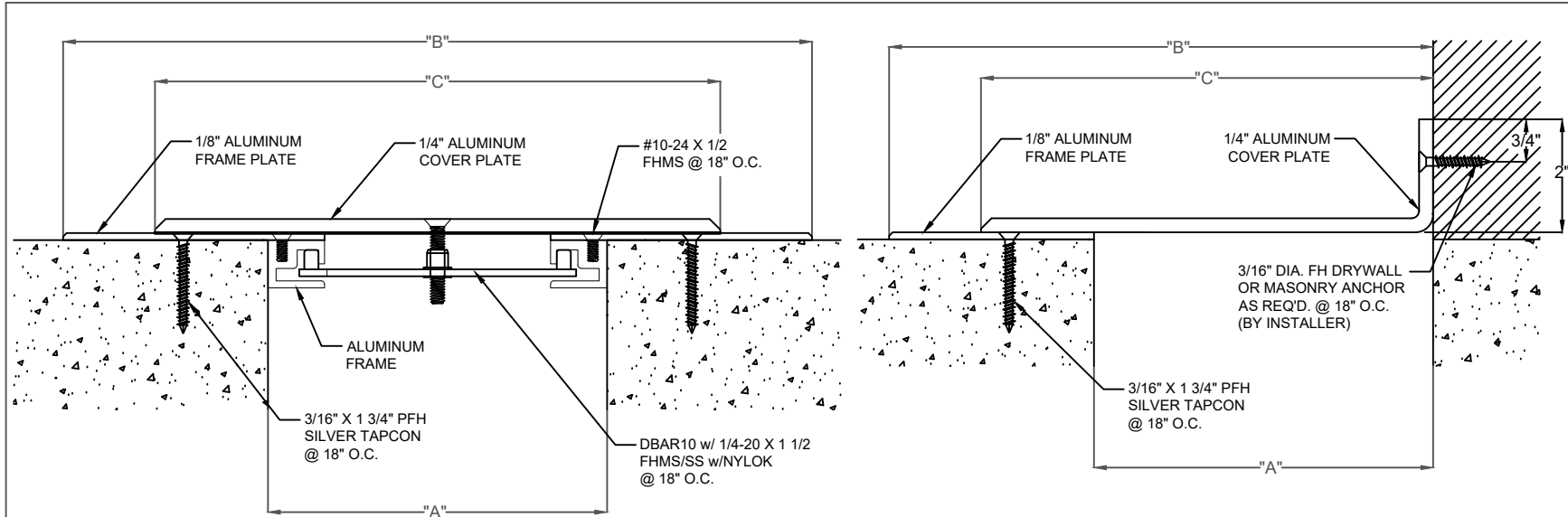


13311 Main Road \* Akron \* New York \* 14001  
 Phone: (716) 542-3991 \* Fax: (716) 542-3996 \* E-mail: sales@eriemetal.com

PROJECT: \_\_\_\_\_

TITLE: ESFE-400/400W

Detailed by: BAF	Date: 10/21/17
Checked by: SLP	Date: 10/21/17
Scale: NTS	EMS Job #:
Sheet No.: 1 of 1	Drawing No.: ESFE-1



***FLOOR TO FLOOR/WALL - SURFACE MOUNT COVER***

EXPOSED FINISH: MILL

MOVEMENT: +/- 50% JOINT WIDTH (floor-floor)

MOVEMENT: +/- 25% JOINT WIDTH (floor-wall)

STOCK LENGTHS: 10'-0"

PRODUCT	Application	Joint Size "A" @ Mean T°F	Exposed Site line "B" IN(MM)	Top Plate Width "C" IN(MM)	Total Movement IN (MM)
ESFE-600	Floor-Floor	6.00" (152)	13.25" (337)	10.00" (254)	6.00" (152)
ESFE-600W	Floor-Wall	6.00" (152)	9.62" (244)	8.00" (203)	3.00" (76)

NO.	Description	Date	By
<small>The information contained herein is the proprietary property of ERIE METAL SPECIALTIES, INC. No portion of it may be reproduced by any means or used in any form except for the purpose for which it was intended. All rights of design and invention are hereby reserved.</small>			

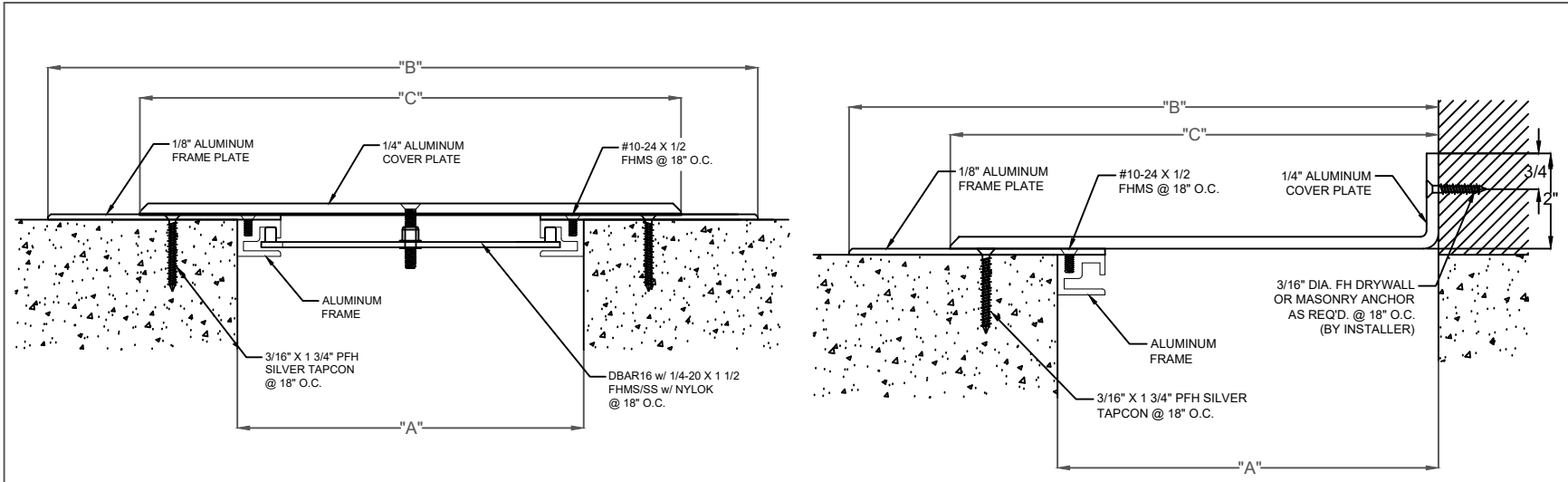


13311 Main Road \* Akron \* New York \* 14001  
 Phone: (716) 542-3991 \* Fax: (716) 542-3996 \* E-mail: sales@eriemetal.com

PROJECT:

TITLE: ESFE-600/600W

Detailed by: BAF	Date: 10/21/17
Checked by: SLP	Date: 10/21/17
Scale: NTS	EMS Job #:
Sheet No.: 1 of 1	Drawing No.: ESFE-1



***FLOOR TO FLOOR/WALL - SURFACE MOUNT COVER***

EXPOSED FINISH: MILL

MOVEMENT: +/- 50% JOINT WIDTH (floor-floor)

MOVEMENT: +/- 25% JOINT WIDTH (floor-wall)

STOCK LENGTHS: 10'-0"

PRODUCT	Application	Joint Size "A" @ Mean T°F	Exposed Site line "B" IN(MM)	Top Plate Width "C" IN(MM)	Total Movement IN (MM)
ESFE-800	Floor-Floor	8.00" (203)	16.75" (425)	12.50" (318)	8.00" (203)
ESFE-1000	Floor-Floor	10.00" (254)	20.75" (527)	15.50" (394)	10.00" (254)
ESFE-1200	Floor-Floor	12.00" (305)	24.75" (629)	18.50" (470)	12.00" (305)
ESFE-800W	Floor-Wall	8.00" (203)	12.37" (314)	10.25" (260)	4.00" (102)
ESFE-1000W	Floor-Wall	10.00" (254)	15.37" (391)	12.75" (324)	5.00" (127)
ESFE-1200W	Floor-Wall	12.00" (305)	18.37" (467)	15.25" (387)	6.00" (152)

NO.	Description	Date	By
<small>The information contained herein is the proprietary property of ERIE METAL SPECIALTIES, INC. No portion of it may be reproduced by any means or used in any form except for the purpose for which it was intended. All rights of design and invention are hereby reserved.</small>			



13311 Main Road \* Akron \* New York \* 14001  
 Phone: (716) 542-3991 \* Fax: (716) 542-3996 \* E-mail: sales@eriemetal.com

PROJECT:

TITLE: ESFE-800/800W, 1000/1000W, 1200/1200W

Detailed by: BAF	Date: 10/21/17
Checked by: SLP	Date: 10/21/17
Scale: NTS	EMS Job #:
Sheet No.: 1 of 1	Drawing No.: ESFE-1