

EFA-Series Flooring System

Interior Joints (Floor)

FEATURES

MINIMAL SIGHT LINE Integrates with floor material and handles substrate offset.

SURFACE MOUNT No blockout is required. Simply anchor to subfloor.

DETAILS

MATERIAL 6063-T5 Aluminum, Meets ASTM B221

FINISH Mill

MOVEMENT

- Thermal: Horizontal and Vertical

MOUNTING Surface

JOINT SIZE 2 to 3 inches

LENGTH 10 Linear Feet

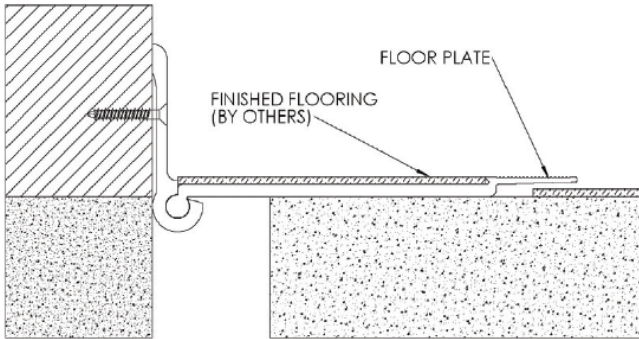
LOAD Pedestrian and Light Cart

INSTALLATION Floor

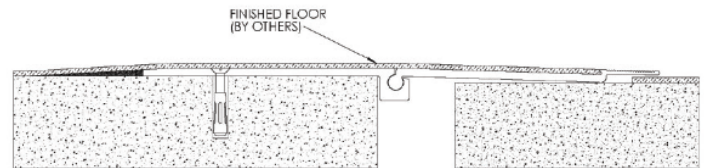
OPTIONS Moisture barrier, fire barrier



FLOOR-TO-CORNER



FLOOR-TO-FLOOR



MODELS

MODEL	APPLICATION	JOINT SIZE AT MEAN T°F	EXPOSED SIGHT LINE	INFILL HEIGHT	TOTAL MOVEMENT
EFA150-125	Floor to Floor	3" (76mm)	1.5" (38mm)	0.125" (3mm)	1.25" (32mm)
EFA150-250	Floor to Floor	3" (76mm)	1.5" (38mm)	0.25" (6mm)	1.25" (32mm)
EFA150-375	Floor to Floor	3" (76mm)	1.5" (38mm)	0.375" (10mm)	1.25" (32mm)
EFA150-125W	Floor to Wall	3" (76mm)	1.5" (38mm)	0.125" (3mm)	1.25" (32mm)
EFA150-250W	Floor to Wall	3" (76mm)	1.5" (38mm)	0.25" (6mm)	1.25" (32mm)
EFA150-375W	Floor to Wall	3" (76mm)	1.5" (38mm)	0.375" (10mm)	1.25" (32mm)



Erie Metal Specialties, Inc.
13311 Main Road
Akron, NY 14001

Phone: 716-542-3991
Website: www.eriemetal.com
E-Mail: sales@eriemetal.com