



# SUBSTITUTION REQUEST

(After the Bidding/Negotiating Phase)

Project: \_\_\_\_\_ Substitution Request Number: \_\_\_\_\_  
 \_\_\_\_\_  
 From: \_\_\_\_\_  
 To: \_\_\_\_\_ Date: \_\_\_\_\_  
 \_\_\_\_\_  
 A/E Project Number: \_\_\_\_\_  
 Re: \_\_\_\_\_ Contract For: \_\_\_\_\_

Specification Title: \_\_\_\_\_ Description: \_\_\_\_\_  
 Section: \_\_\_\_\_ Page: \_\_\_\_\_ Article/Paragraph: \_\_\_\_\_

Proposed Substitution: \_\_\_\_\_  
 Manufacturer: \_\_\_\_\_ Phone: \_\_\_\_\_  
 Address: \_\_\_\_\_  
 Trade Name: \_\_\_\_\_ Model No.: \_\_\_\_\_  
 Installer: \_\_\_\_\_ Phone: \_\_\_\_\_  
 Address: \_\_\_\_\_

History:  New product  1-4 years old  5-10 years old  More than 10 years old

Differences between proposed substitution and specified product: \_\_\_\_\_  
 \_\_\_\_\_  
 \_\_\_\_\_

Point-by-point comparative data attached — REQUIRED BY A/E

Reason for not providing specified item: \_\_\_\_\_  
 \_\_\_\_\_

### Similar Installation:

Project: \_\_\_\_\_ Architect: \_\_\_\_\_  
 Address: \_\_\_\_\_ Owner: \_\_\_\_\_  
 \_\_\_\_\_ Date Installed: \_\_\_\_\_

Proposed substitution affects other parts of Work:  No  Yes; explain \_\_\_\_\_  
 \_\_\_\_\_

Savings to Owner for accepting substitution: \_\_\_\_\_ (\$ \_\_\_\_\_).

Proposed substitution changes Contract Time:  No  Yes [Add] [Deduct] \_\_\_\_\_ days.

Supporting Data Attached:  Drawings  Product Data  Samples  Tests  Reports  \_\_\_\_\_

# SUBSTITUTION REQUEST

(After the Bidding/Negotiating Phase — Continued)

---

The Undersigned certifies:

- Proposed substitution has been fully investigated and determined to be equal or superior in all respects to specified product.
  - Same warranty will be furnished for proposed substitution as for specified product.
  - Same maintenance service and source of replacement parts, as applicable, is available.
  - Proposed substitution will have no adverse effect on other trades and will not affect or delay progress schedule.
  - Cost data as stated above is complete. Claims for additional costs related to accepted substitution which may subsequently become apparent are to be waived.
  - Proposed substitution does not affect dimensions and functional clearances.
  - Payment will be made for changes to building design, including A/E design, detailing, and construction costs caused by the substitution.
  - Coordination, installation, and changes in the Work as necessary for accepted substitution will be complete in all respects.
- 

Submitted by: \_\_\_\_\_

Signed by: \_\_\_\_\_

Firm: \_\_\_\_\_

Address: \_\_\_\_\_

Telephone: \_\_\_\_\_

Attachments:

---

## A/E's REVIEW AND ACTION

- Substitution approved - Make submittals in accordance with Specification Section 01 25 00 Substitution Procedures.
- Substitution approved as noted - Make submittals in accordance with Specification Section 01 25 00 Substitution Procedures.
- Substitution rejected - Use specified materials.
- Substitution Request received too late - Use specified materials.

Signed by: \_\_\_\_\_ Date: \_\_\_\_\_

---

Additional Comments:  Contractor  Subcontractor  Supplier  Manufacturer  A/E  
 Other:

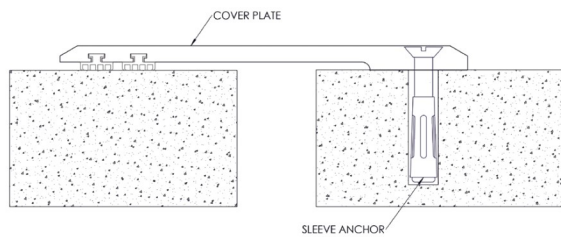
# ALCPS-Series (Aluminum Smooth Surface)

## Description

The ALCPS-Series aluminum cover plates are smooth surfaced and ideal for applications such as gymnasium floors; they feature two gaskets to dampen sound in high-pedestrian traffic applications.

The ALCPS-Series easily installs on floor surface, directly to the substrate without the preformed blockout requirements.

FLOOR-TO-FLOOR



## Details/Features

**Material** 6063-T6 Aluminum, Meets ASTM B221

**Finish** Mill

**Movement** Thermal: Horizontal

**Mounting** Surface

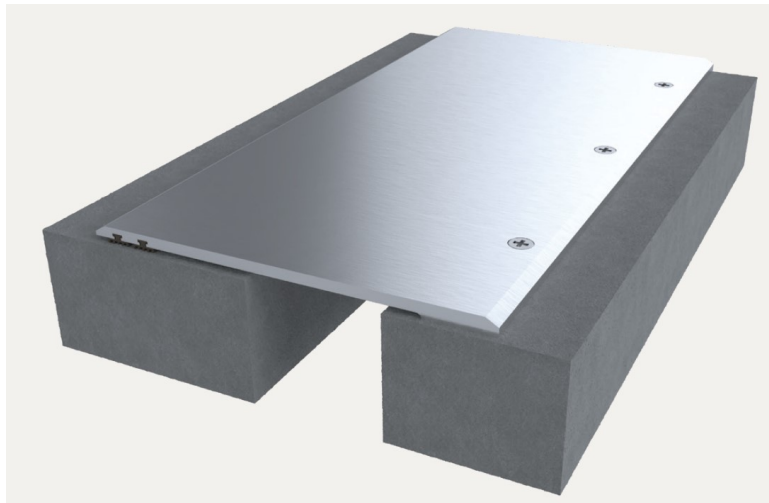
**Joint Size** 1 inch and 2 inches

**Length** 10 Linear Feet

**Load** Pedestrian and Light Cart

**Installation** Floor

**Options** Fire Barrier



MODEL	APPLICATION	JOINT SIZE AT MEAN T°F	EXPOSED SIGHT LINE	TOTAL MOVEMENT
ALCPS-100	Surface	1" (25mm)	4.18" (107mm)	1" (25mm)
ALCPS-200	Surface	2" (51mm)	6" (153mm)	2" (51mm)

# ALCPS-Series (Aluminum Smooth Surface)

## INSTALLATION INSTRUCTIONS

The following installation procedure is very important and must be fully understood prior to beginning any work. To ensure proper installation and performance of the aluminum cover plate system the following must be completed by the installing contractor. Failure to do so will affect product warranty.

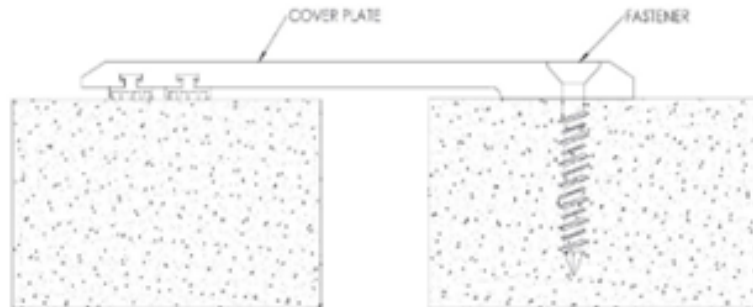
### Material Preparation

1. Carefully read and understand installation procedure. Contact Technical Service Department (716-542-3991) for product assistance.
2. Inspect all shipments and materials for missing or damaged components and hardware. Contact Customer Service (716-542-3991) with order number for prompt assistance.
3. Inspect substrate or adjacent construction for acceptance before beginning work. Report unacceptable construction to the project manager for scheduled repair work.

### Tool List

- \*Tape Measure
- \*Chop saw to cut product to length
- \*Electric drill with 1/4" masonry bit
- \*Broom & dustpan or vacuum

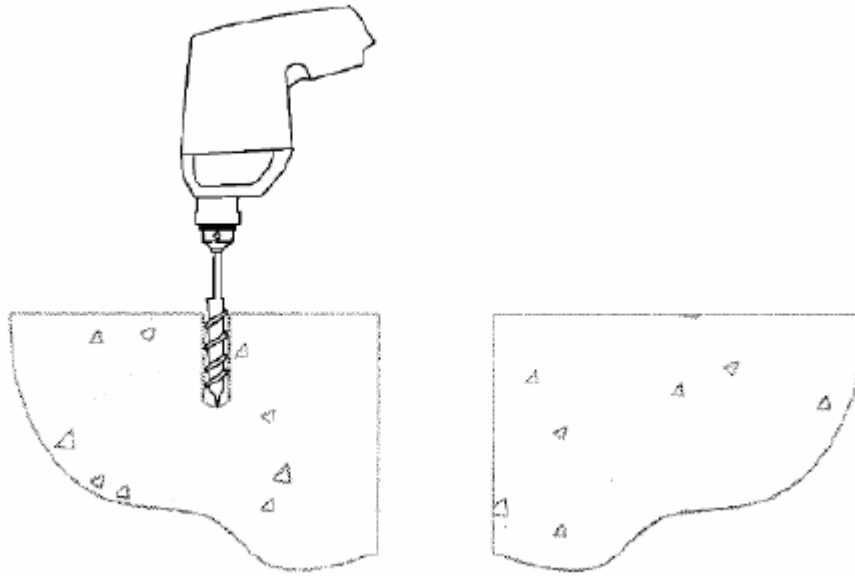
### Material Installation



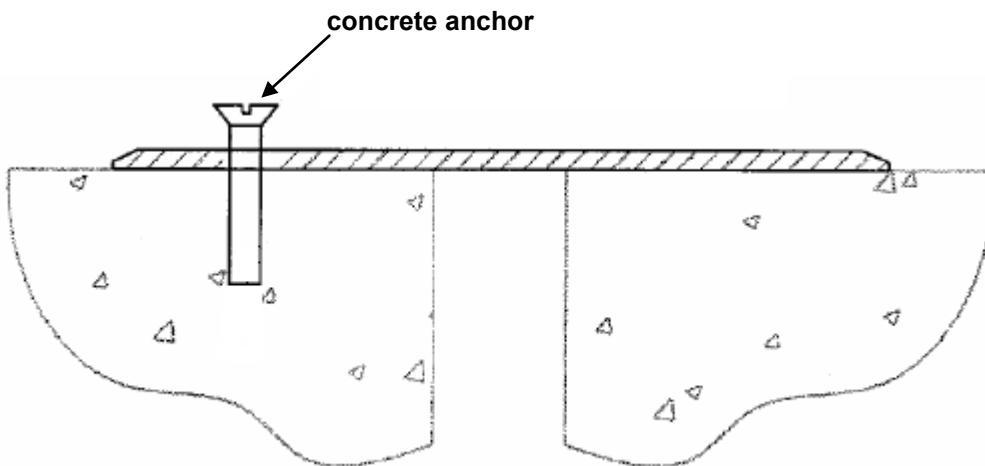
1. Cut and fit cover plate to required length, if installing more than one piece, lay out entire run to ensure proper alignment. Make sure that the pre-drilled holes are lined up at least 1-1/2" from the edge of the expansion joint.



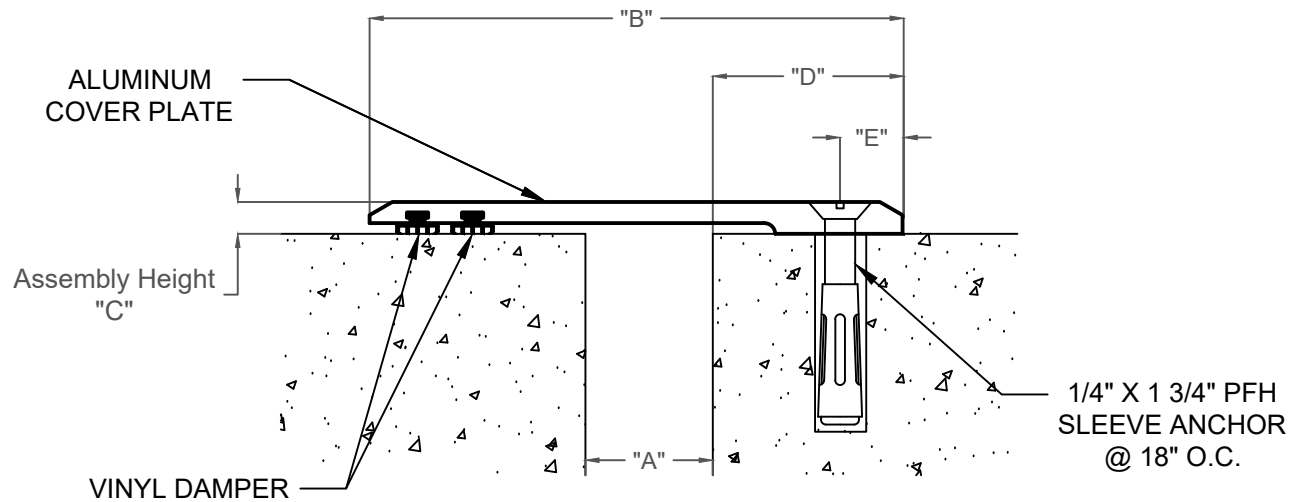
## Material Installation



2. Drill end holes first, this ensures the cover plate will not move and alignment with other joints is obtained. Cover plates are supplied with predrilled holes, using a 1/4" concrete drill bit drill holes to a depth of 2-1/2".



3. Insert the supplied sleeve anchor into the hole so the head is flush with the top surface of the cover plate. Expand the anchor by tightening the head 2 to 3 turns.
4. Once anchors are in the end holds, drill remaining holes and install anchors.



PRODUCT	Application	Joint Size "A" @ Mean T°F	Exposed Site line "B" IN(MM)	Assembly Height "C" IN(MM)	"D" IN(MM)	"E" IN(MM)	Total Movement IN (MM)
ALCPS-100	Floor-Floor	1.00" (25)	4.18" (107)	0.25" (6)	1.50" (38)	0.50" (13)	1.00" (25)
ALCPS-200	Floor-Floor	2.00" (51)	6.00" (153)	0.25" (6)	1.50" (38)	0.50" (13)	2.00" (51)

**GYM. FLOOR-TO-FLOOR SURFACE MOUNTED**

EXPOSED FINISH: MILL

VINYL: 70 DURO PVC

MOVEMENT: +/- 50% NOMINAL JOINT WIDTH

STOCK LENGTHS: 10'-0"

NO.	Description	Date	By
<small>The information contained herein is the proprietary property of ERIE METAL SPECIALTIES, INC. No portion of it may be reproduced by any means or used in any form except for the purpose for which it was intended. All rights of design and invention are hereby reserved.</small>			



13311 Main Road \* Akron \* New York \* 14001  
 Phone: (716) 542-3991 \* Fax: (716) 542-3996 \* E-mail: sales@eriemetal.com

PROJECT:

TITLE: ALCPS-Series 100/200 Surface Mount Gym Floor Cover Plate

Detailed by:	Date:
BAF	10/21/17
Checked by:	Date:
SLP	10/21/17
Scale:	EMS Job #:
NTS	
Sheet No.:	Drawing No.:
1 of 1	ALCPS-1