



SUBSTITUTION REQUEST

(After the Bidding/Negotiating Phase)

Project: _____ Substitution Request Number: _____

 From: _____
 To: _____ Date: _____

 A/E Project Number: _____
 Re: _____ Contract For: _____

Specification Title: _____ Description: _____
 Section: _____ Page: _____ Article/Paragraph: _____

Proposed Substitution: _____
 Manufacturer: _____ Phone: _____
 Address: _____
 Trade Name: _____ Model No.: _____
 Installer: _____ Phone: _____
 Address: _____

History: New product 1-4 years old 5-10 years old More than 10 years old

Differences between proposed substitution and specified product: _____

Point-by-point comparative data attached — REQUIRED BY A/E

Reason for not providing specified item: _____

Similar Installation:

Project: _____ Architect: _____
 Address: _____ Owner: _____
 _____ Date Installed: _____

Proposed substitution affects other parts of Work: No Yes; explain _____

Savings to Owner for accepting substitution: _____ (\$ _____).

Proposed substitution changes Contract Time: No Yes [Add] [Deduct] _____ days.

Supporting Data Attached: Drawings Product Data Samples Tests Reports _____

SUBSTITUTION REQUEST

(After the Bidding/Negotiating Phase — Continued)

The Undersigned certifies:

- Proposed substitution has been fully investigated and determined to be equal or superior in all respects to specified product.
 - Same warranty will be furnished for proposed substitution as for specified product.
 - Same maintenance service and source of replacement parts, as applicable, is available.
 - Proposed substitution will have no adverse effect on other trades and will not affect or delay progress schedule.
 - Cost data as stated above is complete. Claims for additional costs related to accepted substitution which may subsequently become apparent are to be waived.
 - Proposed substitution does not affect dimensions and functional clearances.
 - Payment will be made for changes to building design, including A/E design, detailing, and construction costs caused by the substitution.
 - Coordination, installation, and changes in the Work as necessary for accepted substitution will be complete in all respects.
-

Submitted by: _____

Signed by: _____

Firm: _____

Address: _____

Telephone: _____

Attachments:

A/E's REVIEW AND ACTION

- Substitution approved - Make submittals in accordance with Specification Section 01 25 00 Substitution Procedures.
- Substitution approved as noted - Make submittals in accordance with Specification Section 01 25 00 Substitution Procedures.
- Substitution rejected - Use specified materials.
- Substitution Request received too late - Use specified materials.

Signed by: _____ Date: _____

Additional Comments: Contractor Subcontractor Supplier Manufacturer A/E
 Other:

ENWJ Series Wall System

Interior Joints (Wall)



Aluminum Wall and Ceiling system is capable of thermal movement. It mounts easily after final wall surface is complete. Standard with a clear anodize finish.

FEATURES

COORDINATING CORNERS Available with corner option for a complete solution.

ARCHITECTURAL AESTHETICS The sliding cover plate with a clear anodized finish provides a high-end appearance.

CONTINUOUS SIGHT LINE This system can be used on walls, ceilings and corners to provide seamless and continuous aesthetics.

DETAILS

MATERIAL 6063-T6 Aluminum

FINISH Clear Anodize

MOVEMENT

- Thermal: Horizontal

MOUNTING Surface

JOINT SIZE 1 inch to 3 inches

LENGTH 10 Linear Feet

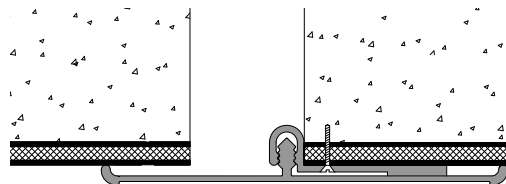
APPLICATION Interior

INSTALLATION Wall or Ceiling

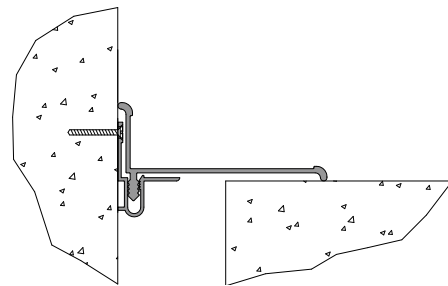
OPTIONS Moisture Barrier, Fire Barrier

MODELS

MODEL	INSTALLATION	JOINT SIZE AT MEAN T°F	SYSTEM WIDTH	TOTAL MOVEMENT
ENWJ-100	Wall-to-Wall	1" (25mm)	3" (76mm)	0.5" (13mm)
ENWJ-100W	Wall-to-Ceiling/Corner	1" (25mm)	3" (76mm)	0.5" (13mm)
ENWJ-150	Wall-to-Wall	1.5" (38mm)	4" (102mm)	2" (51mm)
ENWJ-200	Wall-to-Wall	2" (51mm)	5.75" (146mm)	2" (51mm)
ENWJ-200W	Wall-to-Ceiling/Corner	2" (51mm)	5.75" (146mm)	2" (51mm)
ENWJ-300	Wall-to-Wall	3" (76mm)	7" (178mm)	3" (76mm)
ENWJ-300W	Wall-to-Ceiling/Corner	3" (76mm)	7" (178mm)	3" (76mm)



Wall-to-Wall



Wall/Ceiling Corner



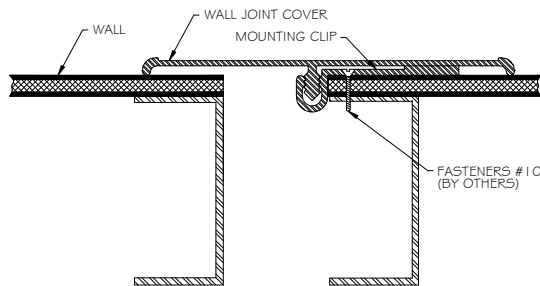
Erie Metal Specialties, Inc.
13311 Main Road
Akron, NY 14001

Phone: 716-542-3991
Website: www.eriametal.com
E-Mail: sales@eriametal.com

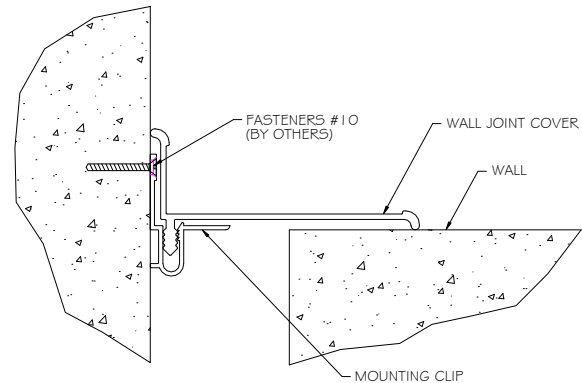


Erie Metal Specialties, Inc.
13311 Main Road
Akron, NY 14001

Phone: 716-542-3991
Website: www.eriemetal.com
E-Mail: sales@eriemetal.com



ENWJ Series



ENJW-W Series

EMS supplies these items along with expansion joints:

1. Mounting clips

Materials needed by installer:

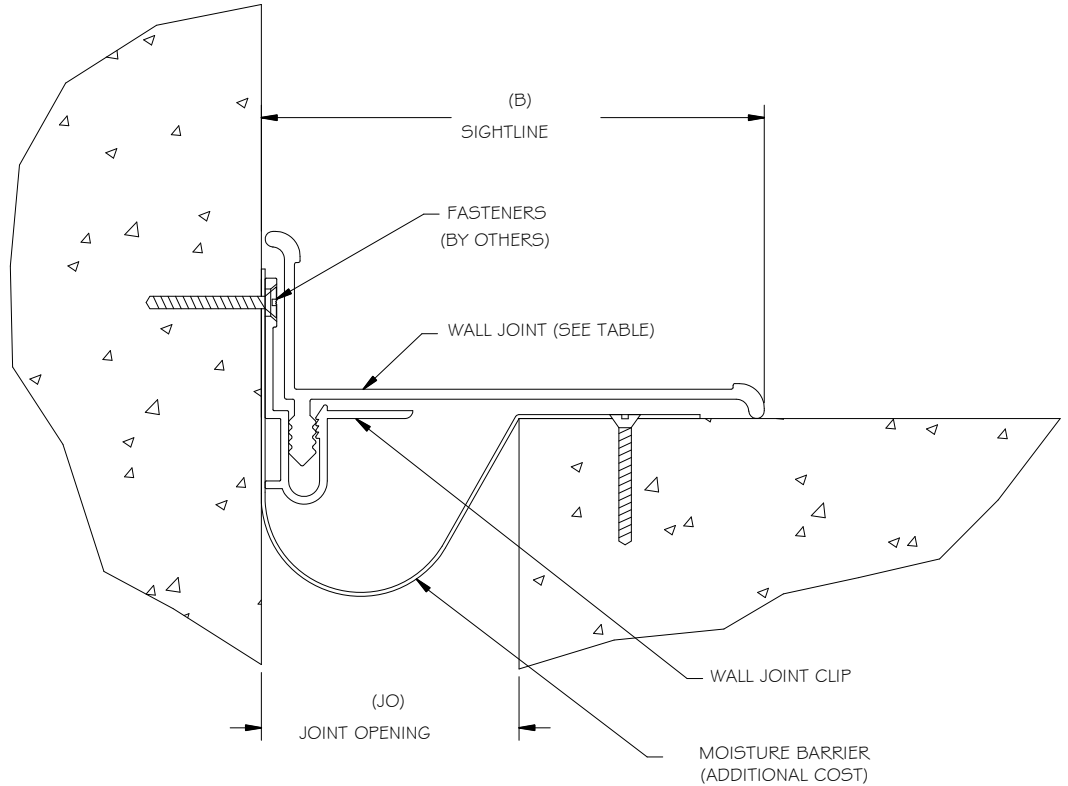
1. Electric drill
2. Tape measure or ruler
3. Flathead self-tapping or drywall screws
4. Rubber mallet
5. Chop saw to cut joints to length
6. Plumb bob or level

Installation instructions

1. Measure floor to ceiling height and cut the joint cover to length.
2. Install the mounting clips on one side of the opening, spacing the clips approximately 24.00 inches on center. Use the edge of the joint cover to align the clips and assure that the installation is plumb. For corner condition, align underside of mounting clip to surface of wall.
3. Place the joint cover over the opening, aligning the male portion of the cover with the female portion of the mounting clip. Set the cover using a rubber mallet. Avoid excessive force, which may damage the joint cover.
4. The clear anodized cover may be left fully exposed or the recessed portion may be filled with wall covering, leaving a ¼ inch radius edge exposed.



PLAN VIEW
(NOT TO SCALE)



SPECIFICATIONS:

- 6063-T6 ALUMINUM
- CLEAR ANODIZED FINISH
- WALL JOINT CLIPS MANUFACTURED WITH PREDRILLED HOLES
- STANDARD LENGTH = 10' SECTION
- MOISTURE BARRIER OPTIONAL

PART NUMBER	JOINT OPENING (JO)									
	AT INSTALL		ALLOW MIN		ALLOW MAX		SIGHTLINE (B)		TOTAL MOVEMENT	
	IN	MM	IN	MM	IN	MM	IN	MM	IN	MM
ENWJ-100W	1.0	25	.50	13	1.75	45	2.50	64	1.0	25
ENWJ-200W	2.0	51	.50	13	3.25	83	4.00	102	2.0	51
ENWJ-300W	3.0	76	.50	13	4.75	121	5.50	140	3.0	76

NO.	Description	Date	By

The information contained herein is the proprietary property of ERIE METAL SPECIALTIES, INC. No portion of it may be reproduced by any means or used in any form except for the purpose for which it was intended. All rights of design and invention are hereby reserved.



13311 Main Road • Akron • New York • 14001
 Phone: (716) 542-3991 • Fax: (716) 542-3996 • E-mail: sales@eriemetal.com

PROJECT:

TITLE:

Detailed by: BAF	Date: 10/21/17
Checked By: SLP	Date: 10/21/17
Scale: NTS	EMS Job #:
Sheet No.: 1 of 1	Drawing No.: