

# ELCWF Series Corridor System

## Interior Joints (Wall)

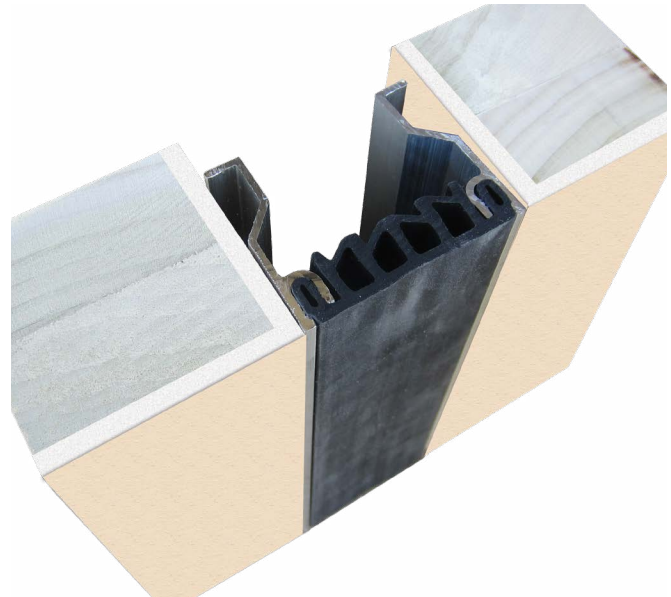
The Elastomeric Corridor System limits the sight line of the expansion joint by mounting inside the joint opening. Available in a variety of attachment solutions for various applications with standard santoprene color selection to match your surrounding substrate and finish material.

### FEATURES

**COMPLEMENTARY SEAL COLORS** Available in four elastomeric seal color options: beige, white, gray or black.

**QUICKER INSTALLATION** Reduce installation time and labor costs with fast and easy installation.

**CONTINUOUS SIGHT LINE** This system can be used on walls, ceilings and corners to provide seamless and continuous aesthetics.



### DETAILS

**MATERIAL** 6063-T6 Aluminum with Rubber Seal

**FINISH** Mill

#### MOVEMENT

- Thermal: Horizontal

**MOUNTING** Flush

**JOINT SIZE** 1 inch to 2 inches

**SEAL LENGTH** Continuous

**APPLICATION** Interior

**INSTALLATION** Wall or Ceiling

**OPTIONS** Seal Color, Moisture Barrier, Fire Barrier

### SEAL COLORS



Beige

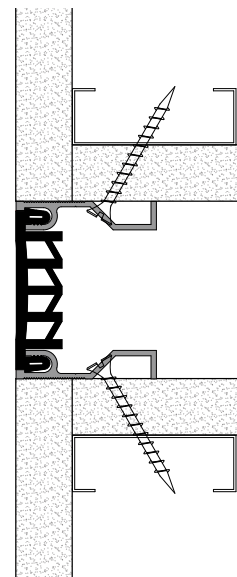
White

Gray

Black

### MODELS

MODEL	INSTALLATION	JOINT SIZE AT MEAN T°F	SYSTEM WIDTH	TOTAL MOVEMENT
ELCWF-100	Wall-to-Wall or Wall/Ceiling Corner	1/2" to 2"	1/2" to 2"	±1/2" to ±2"
ELCWF-200	Wall-to-Wall or Wall/Ceiling Corner	1/2" to 2"	1/2" to 2"	±1/2" to ±2"



Wall-to-Wall



Erie Metal Specialties, Inc.  
13311 Main Road  
Akron, NY 14001

Phone: 716-542-3991  
Website: [www.eriemetal.com](http://www.eriemetal.com)  
E-Mail: [sales@eriemetal.com](mailto:sales@eriemetal.com)